

del Sig. Lotti



Handwritten musical notation on a five-line staff, featuring a treble clef and a key signature of one sharp (F#). The melody consists of several measures of music, including a long note followed by a series of eighth notes. Below the staff, the lyrics "a - - ra cara non lagri-" are written in a cursive hand.

Handwritten musical notation on a five-line staff, featuring a treble clef and a key signature of one sharp (F#). The melody continues with several measures of music, including a long note followed by a series of eighth notes. Below the staff, the lyrics "mar da' pacc' al mesto" are written in a cursive hand.



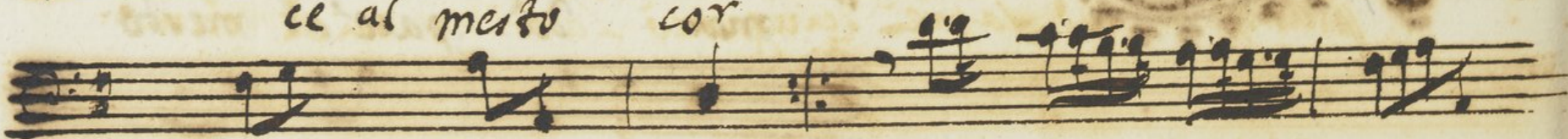
cor

da pa-



ce al mesto

cor

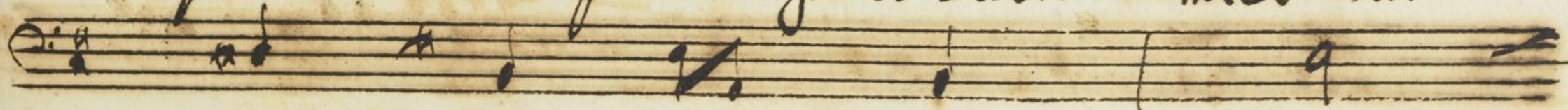




le'a mè tu' ~~gli~~ accanto il



piano nes saprei scingar cò labri miei dan-





.. cor saprei temperar l-a- cerbo mio der



fa t. fa

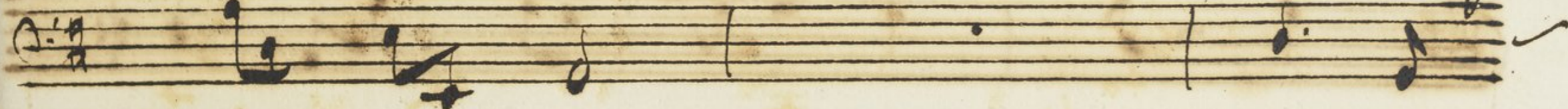


.. cor l-a- cer - - - - -





o mio dolor ca - ra cara non lagri-



ma da pace al mesto cor da pa -



Handwritten musical score on aged paper, featuring four staves. The notation includes treble and bass clefs, various note values, and rests. The second staff contains the lyrics "ce al mesto cor" written in cursive. The word "Fine" is written in a decorative cursive script at the end of the fourth staff. The paper shows signs of age, including foxing and staining.