

(Questo pezzo è raddoppiato)

43

G. Mancini Cantor

44

Cantata à Voce sola

W. e Flauto obbligato

Del sig. Cavallo Aless: Scarlatti

Il signor

AMERILIO in pareggiabile

DEL SIG.

D. ANTONIO

DEL SIG.

D. ANTONIO ALBERTA. CORDERO.

Flauto *Allegro*

Violino I *Lento*

Violino II *Lento*

Basso

Handwritten musical score for the first system, consisting of four staves. The top two staves use treble clefs, and the bottom two use bass clefs. The notation includes various note values, rests, and accidentals. The first staff begins with a treble clef, a key signature of one flat, and a common time signature. The music is written in a dense, rhythmic style with many beamed notes. The system concludes with a double bar line.

45
88
45

A set of five empty musical staves, consisting of five horizontal lines each, positioned between the first and second systems of music.

Handwritten musical score for the second system, consisting of four staves. The top two staves use treble clefs, and the bottom two use bass clefs. The notation includes various note values, rests, and accidentals. The first staff begins with a treble clef, a key signature of one flat, and a common time signature. The music is written in a dense, rhythmic style with many beamed notes. The system concludes with a double bar line.

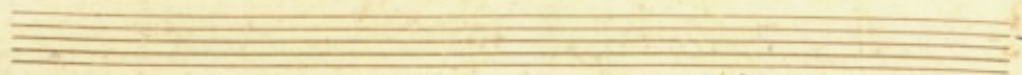
A set of five empty musical staves, consisting of five horizontal lines each, positioned at the bottom of the page.

Handwritten musical score for the first system. It consists of four staves. The top staff is a treble clef with a '2' above it, containing six measures of music with eighth and sixteenth notes. The second staff is a bass clef with 'allegro' written above it, containing six measures of music with quarter and eighth notes. The third and fourth staves are empty.

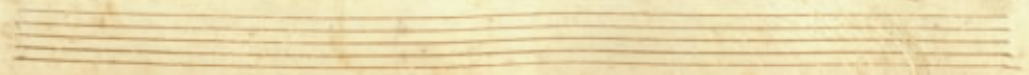
Handwritten musical score for the second system. It consists of four staves. The top staff is a treble clef with a '2' above it, containing six measures of music with quarter notes. The second and third staves are bass clefs, each containing six measures of music with eighth and sixteenth notes. The fourth staff is a bass clef containing six measures of music with quarter and eighth notes.

87
70
46

Handwritten musical score for the first system, consisting of four staves. The top staff features a complex melodic line with many sixteenth notes. The lower three staves provide a harmonic accompaniment with various rhythmic values.



Handwritten musical score for the second system, consisting of four staves. The notation is similar to the first system, with a busy melodic line in the upper staff and accompaniment below.



91

Handwritten musical score for the first system, consisting of four staves. The top staff features a treble clef and contains a series of sixteenth-note runs. The second staff has a treble clef and contains a melody of quarter and eighth notes. The third staff has a treble clef and contains a melody of quarter notes. The bottom staff has a bass clef and contains a bass line with quarter notes and rests. The system concludes with a double bar line.

Handwritten musical score for the second system, consisting of four staves. The top staff features a treble clef and contains a series of sixteenth-note runs. The second staff has a treble clef and contains a melody of quarter and eighth notes. The third staff has a treble clef and contains a melody of quarter notes. The bottom staff has a bass clef and contains a bass line with quarter notes and rests. The system concludes with a double bar line.

~~22~~
22
47

92

Handwritten musical score for the first system. It consists of four staves. The top two staves are vocal lines. The third staff is a basso continuo line with figured bass notation. The lyrics are written below the third staff.

Filen, Filen mio caro bene, so uera

Handwritten musical score for the second system. It consists of four staves. The top two staves are vocal lines. The third staff is a basso continuo line with figured bass notation. The lyrics are written below the third staff.

fe s'osseruo, testimonij no sono; d'essi, i

49
44
48

Handwritten musical score for the first system. It consists of four staves. The top two staves are for a vocal line, and the bottom two are for a basso continuo line. The lyrics are written in Italian.

Monti, la Jerdice, e lo fontè, e questi tronchi s'è

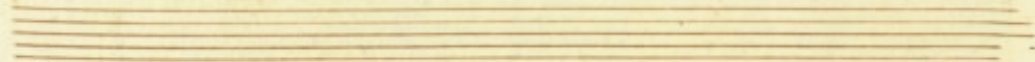
Handwritten musical score for the second system. It consists of four staves. The top two staves are for a vocal line, and the bottom two are for a basso continuo line. The lyrics are written in Italian.

Ohi! e questa piante, che del mio cor d'amarò

95

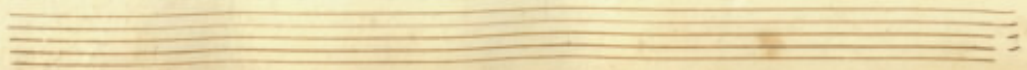
Handwritten musical score for the first system. It consists of three staves. The top staff is a vocal line with a treble clef and a common time signature. The middle staff is a piano accompaniment with a grand staff (treble and bass clefs). The bottom staff is a bass line with a bass clef. The lyrics are written below the piano part.

Sanno la teatra, ch' a re conseruo *ma se amier*



Handwritten musical score for the second system. It consists of three staves. The top staff is a vocal line with a treble clef and a common time signature. The middle staff is a piano accompaniment with a grand staff (treble and bass clefs). The bottom staff is a bass line with a bass clef. The lyrics are written below the piano part.

deni, Calma tua no credo, alli monti alli cussi alla Pen-



90
26
49

Handwritten musical score for the first system. It consists of three staves. The top two staves are vocal lines, and the bottom staff is a basso continuo line. The lyrics are written below the basso continuo staff.

... dico, alle piante, alle fonti, et alli tronchi: Chiedine

Below the basso continuo staff, there are some handwritten notes: *Ad*, *13*, and *14*.

Handwritten musical score for the second system. It consists of three staves. The top two staves are vocal lines, and the bottom staff is a basso continuo line. The lyrics are written below the basso continuo staff.

... sur, & scogera

... mio fedel.

97

Handwritten musical score on aged paper, featuring multiple staves of music. The notation includes various notes, rests, and clefs, with some sections marked with a large 'P' or 'F'.

The score consists of approximately 10 staves. The first staff begins with the word "Paus" written above the notes. The notation is dense, with many beamed notes and rests. A large, decorative flourish or bracket is drawn across the first three staves. The paper shows signs of age, including yellowing and some staining.

92
98

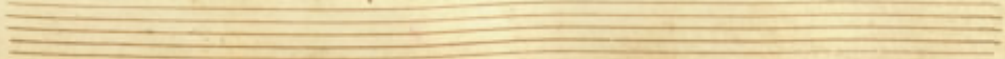
50

Chiedi pur ai monti ai

Siedi, alle font, all' o Pen die so s' ar

con ritors

co, 4/4

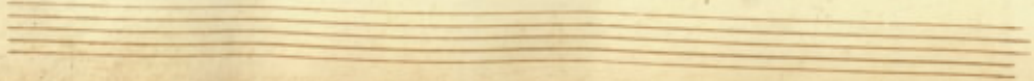


MUSEUM

Handwritten musical score for the first system. It consists of a vocal line on a single staff and a keyboard accompaniment on two staves. The vocal line begins with a treble clef and a key signature of one sharp (F#). The lyrics are: *co n' dico (illi) nō si se' fel si te' fo:*

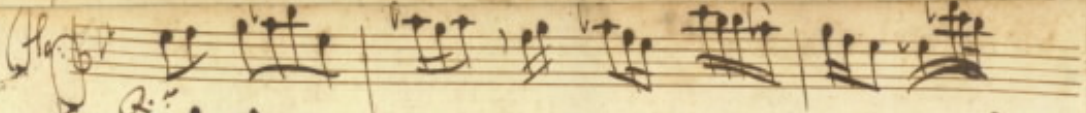
Handwritten musical score for the second system. The vocal line continues with the lyrics: *rel Chiedi gur a Mont' a:*

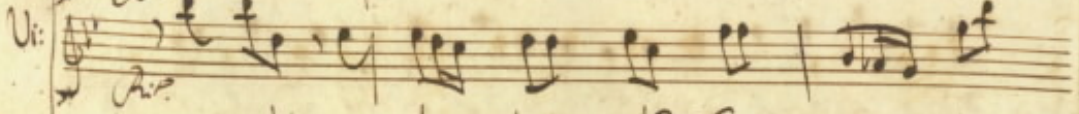
Handwritten musical score for the third system. The vocal line concludes with the lyrics: *savi, alle font' alla Sordica, se s' a:*

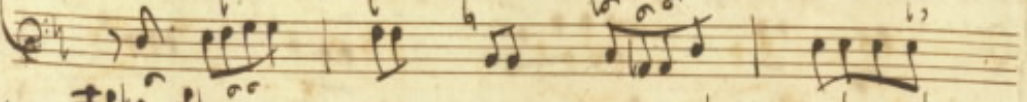


92
100
51

Handwritten musical score on aged paper. The score consists of three systems, each with a vocal line and a piano accompaniment line. The first system includes the lyrics "Doro, eccò si dice hilli-ma si, et r'è fedel, si". The second system includes "si r'è fedel" and "r'è fedel". The third system includes "si r'è fedel fedel". The piano accompaniment features complex rhythmic patterns, including triplets and sixteenth-note runs. The manuscript is written in dark ink on yellowed paper.

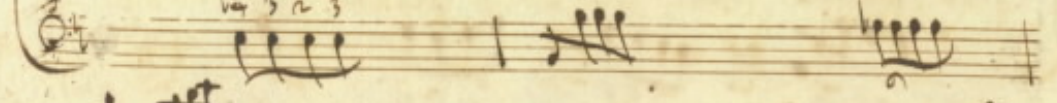
Fl. 

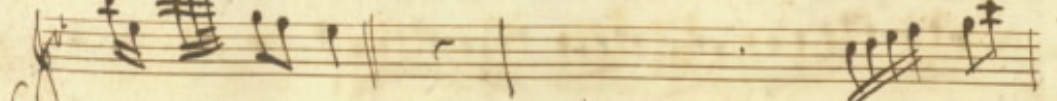
Vi. 

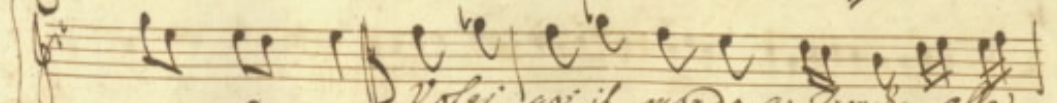


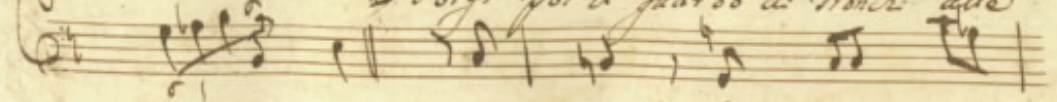




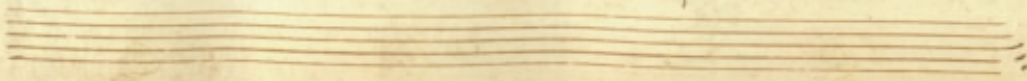








Volgi poi il guardo a: Tron. alle



Handwritten musical score for voice and piano. The score consists of ten staves. The first staff is a treble clef piano accompaniment. The second and third staves are vocal lines with lyrics. The fourth and fifth staves are piano accompaniment. The sixth and seventh staves are vocal lines with lyrics. The eighth and ninth staves are piano accompaniment. The tenth staff is a treble clef piano accompaniment. The lyrics are: "pi anco e nel lor seno leggera al suo seno Billi ma sarai infedel ma al suo seno".

pi anco e nel lor seno leggera al
suo seno Billi ma sarai infedel ma
al suo seno

no Gill. mai sarà infedel mai

ra' sarà infedel. Pi Cop

Mà se proua bastana della mia fida feda

no son eco la voci no son lo cifo dell'branchie

94
104
53

oian to aprimi ò caro il seno, O vedrà di il mio

Coro suo fedel es amore nel sen si batte.

ra' vago sileno et a chi lo feri a'

te' mio del sevor a te' mio del sevor di

ra' così.

Handwritten musical score for the first system, featuring vocal lines and piano accompaniment. The notation includes treble and bass clefs, a 12/8 time signature, and various musical symbols such as notes, rests, and accidentals. The lyrics "Che" are written below the vocal line.

Handwritten musical score for the first system, featuring vocal lines and piano accompaniment. The notation includes treble and bass clefs, a 12/8 time signature, and various musical symbols such as notes, rests, and accidentals. The lyrics "Che" are written below the vocal line.

Handwritten musical score for the second system, continuing the vocal and piano parts. The lyrics "che, che o Sem br'o son fe de lo mio bell' Do lo cruo" are written below the vocal line.

Handwritten musical score for the second system, continuing the vocal and piano parts. The lyrics "che, che o Sem br'o son fe de lo mio bell' Do lo cruo" are written below the vocal line.

~~95~~
~~106~~

54

Handwritten musical score for the first system. It consists of three staves. The top staff is a vocal line with a treble clef and a key signature of one sharp (F#). The middle and bottom staves are piano accompaniment, with the bottom staff including a bass clef. The music is written in a cursive, handwritten style. The lyrics "de - se - ri - vid pon - di - ty - pon -" are written below the piano accompaniment.

Handwritten musical score for the second system. It consists of three staves. The top staff is a vocal line with a treble clef and a key signature of one sharp (F#). The middle and bottom staves are piano accompaniment, with the bottom staff including a bass clef. The music is written in a cursive, handwritten style. The lyrics "o caro caro ob caro caro si ob" are written below the piano accompaniment.

107

Handwritten musical score for the first system, consisting of four staves. The top staff is a vocal line with a treble clef and a key signature of one sharp (F#). The second staff is a vocal line with a treble clef and a key signature of one sharp. The third staff is a vocal line with a treble clef and a key signature of one sharp, containing the lyrics "cara cara cara cara". The fourth staff is a basso continuo line with a bass clef and a key signature of one sharp. The music is written in a historical style with various note values and rests.

Handwritten musical score for the second system, consisting of four staves. The top staff is a vocal line with a treble clef and a key signature of one sharp. The second staff is a vocal line with a treble clef and a key signature of one sharp. The third staff is a vocal line with a treble clef and a key signature of one sharp, containing the lyrics "che si lamberto non fer". The fourth staff is a basso continuo line with a bass clef and a key signature of one sharp. The music is written in a historical style with various note values and rests.

Handwritten musical score for the first system. It consists of four staves. The top staff is a vocal line with lyrics. The second and third staves are for piano accompaniment. The bottom staff is a bass line. The lyrics are: *de lo vi rjpon di vi si oh caro car*

Handwritten musical score for the second system. It consists of four staves. The top staff is a vocal line with lyrics. The second and third staves are for piano accompaniment. The bottom staff is a bass line. The lyrics are: *ro oh caro caro vi rjpon di, oh caro*

Handwritten musical score for the first system. It consists of three staves: a vocal line (soprano), a piano accompaniment (treble and bass clefs), and a basso continuo line (bass clef). The lyrics are written below the piano part.

Caro oh caro Caro vi Oh caro caro

Handwritten musical score for the second system. It consists of three staves: a vocal line (soprano), a piano accompaniment (treble and bass clefs), and a basso continuo line (bass clef). The lyrics are written below the piano part.

Caro Caro vi Caro Caro vi

Handwritten musical score for the first system, consisting of five staves. The notation includes various note values, rests, and clefs. The first staff begins with a treble clef and a common time signature. The second staff has a treble clef and a common time signature. The third staff has a treble clef and a common time signature. The fourth staff has a bass clef and a common time signature. The fifth staff is empty.

93
56

Handwritten musical score for the second system, consisting of five staves. The notation includes various note values, rests, and clefs. The first staff begins with a treble clef and a common time signature. The second staff has a treble clef and a common time signature. The third staff has a treble clef and a common time signature. The fourth staff has a bass clef and a common time signature. The fifth staff is empty.

Vusi quod maggiore Dimmi Dimmi

111

Handwritten musical score for the first system. It consists of four staves. The top staff is a vocal line with a treble clef and a key signature of one flat. The second and third staves are piano accompaniment, with the third staff containing the lyrics. The bottom staff is a bass line with a bass clef and a key signature of one flat. The lyrics are: *Mori à Dio Cora Mori à uoi Cor*

Handwritten musical score for the second system. It consists of four staves. The top staff is a vocal line with a treble clef and a key signature of one flat. The second and third staves are piano accompaniment, with the third staff containing the lyrics. The bottom staff is a bass line with a bass clef and a key signature of one flat. The lyrics are: *Dimmi mori à Dio Cora mori*

Handwritten musical score for the first system, consisting of three staves. The top staff is in treble clef, the middle in alto clef, and the bottom in bass clef. The lyrics are written below the bottom staff.

ro' maria ¹⁰ uui co' ¹⁰ uui co'

Handwritten musical score for the second system, consisting of three staves. The top staff is in treble clef, the middle in alto clef, and the bottom in bass clef. The lyrics are written below the bottom staff.

si co' maria ¹⁰ uui ¹⁰ uui co'

Al fine

Handwritten signature or flourish

13

