



# U L Y S S E,

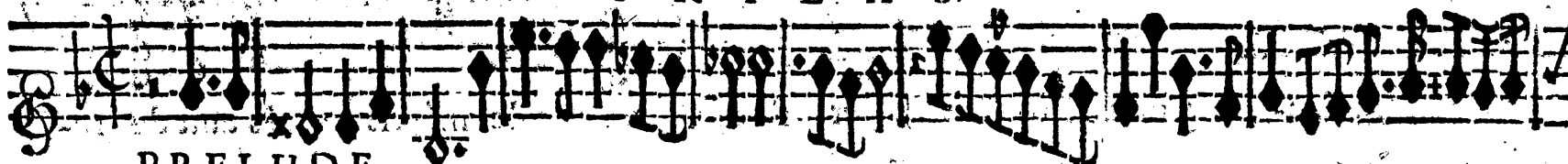
## T R A G E D I E.

### A C T E P R E M I E R.

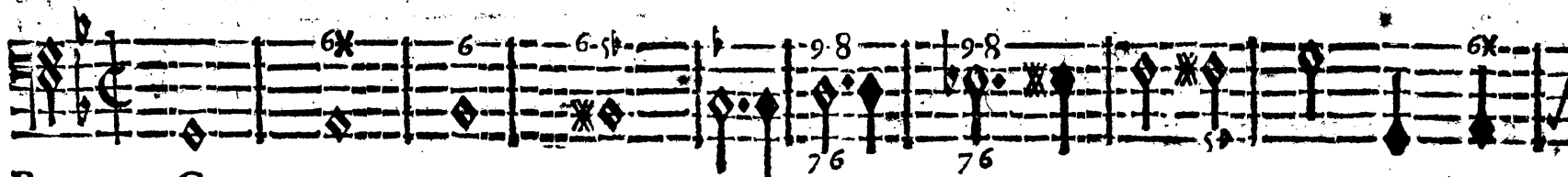
Le Theatre represente les Jardins du Palais d'Itaque.

#### S C E N E P R E M I E R E.

U R I L A S.



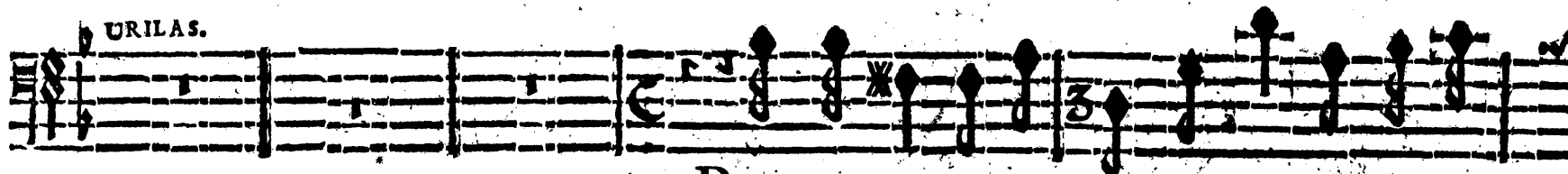
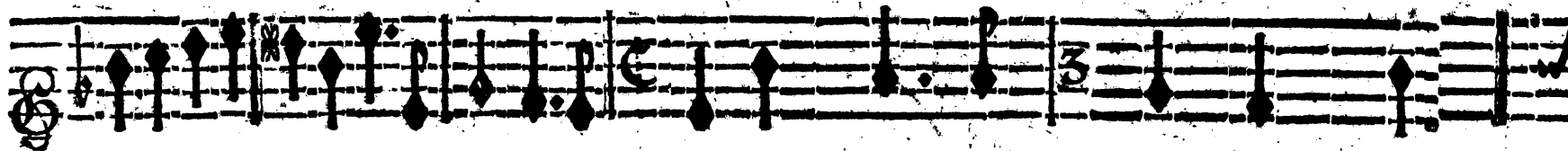
PRELUDE.



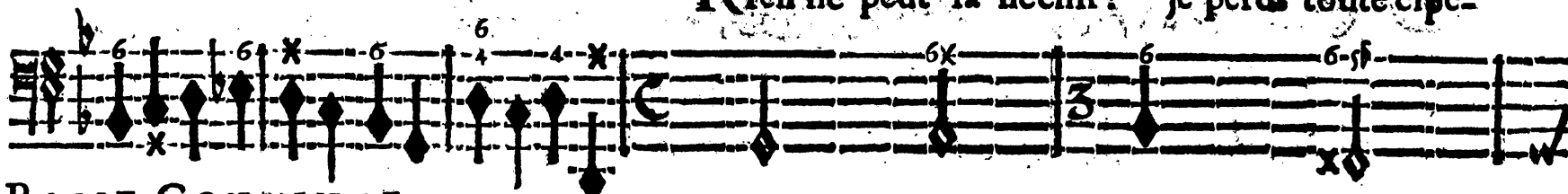
BASSE-CONTINUE.

A

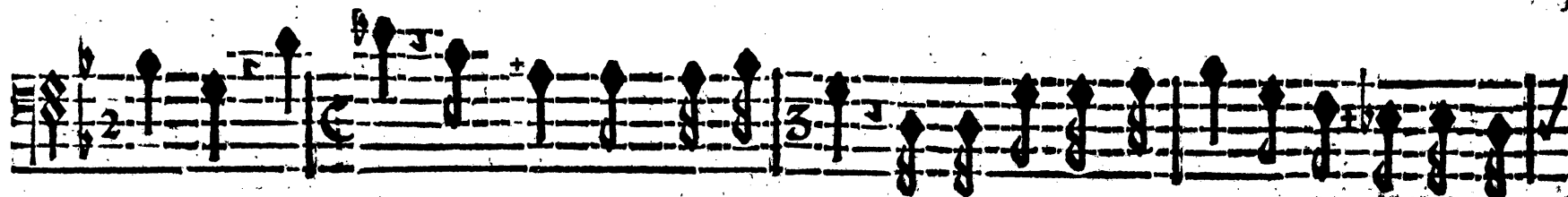
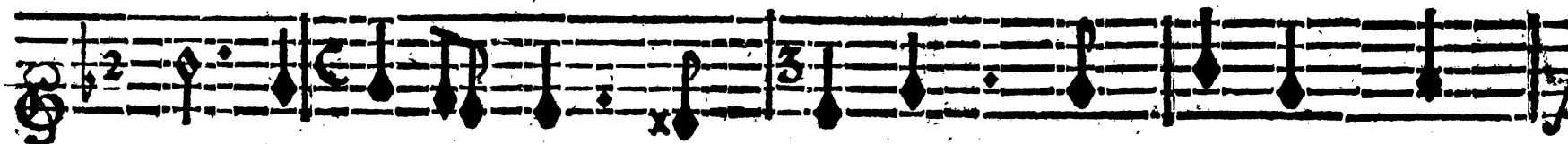
2 ULYSSE, TRAGÉDIE.



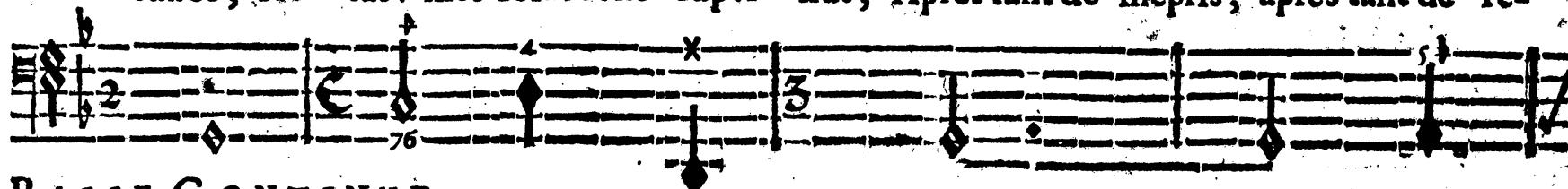
Rien ne peut la fléchir! je perds toute espe-



BASSE CONTINUE.

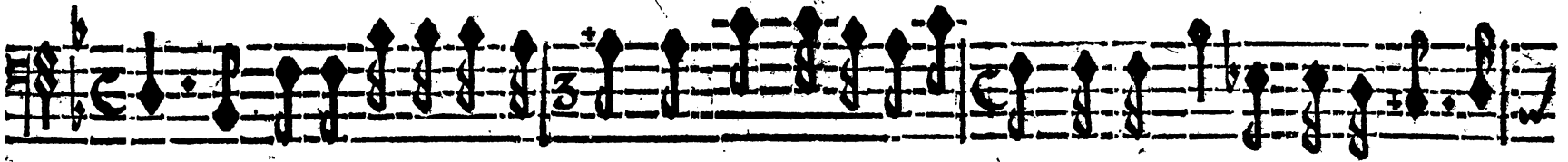


rance, He- las! mes soins sont super- flus, Après tant de mépris, après tant de re-

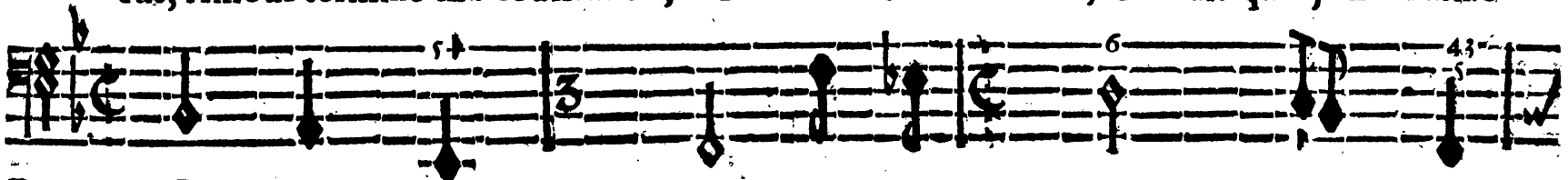


BASSE-CONTINUE.

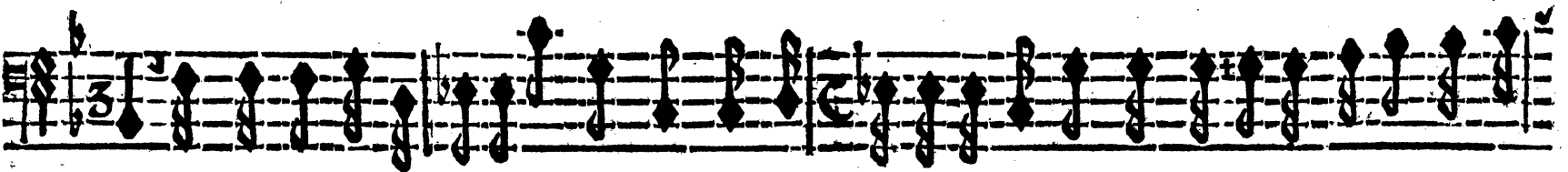
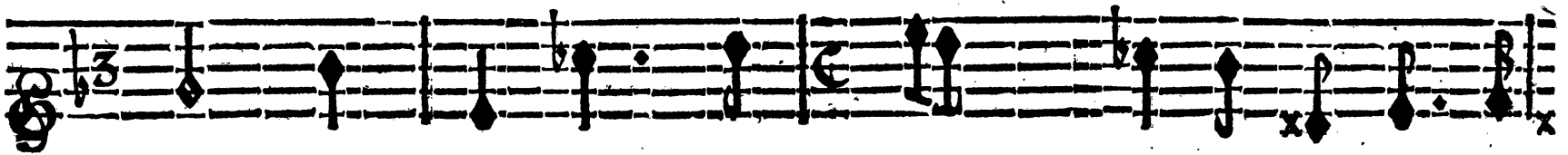
ACTE PREMIER. SCENE I.



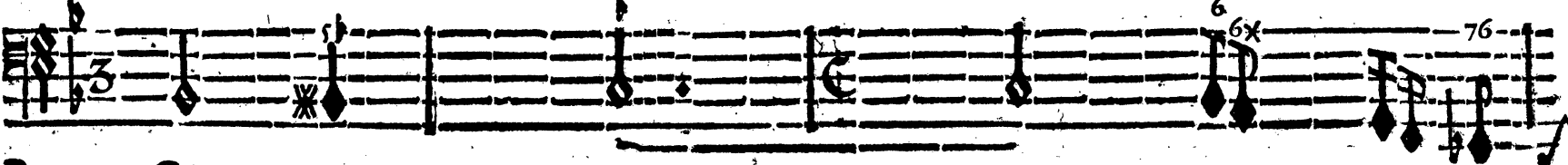
fus, Amour termine ma souffrance, Force la resi- stance, Ou fais que je ne l'aime



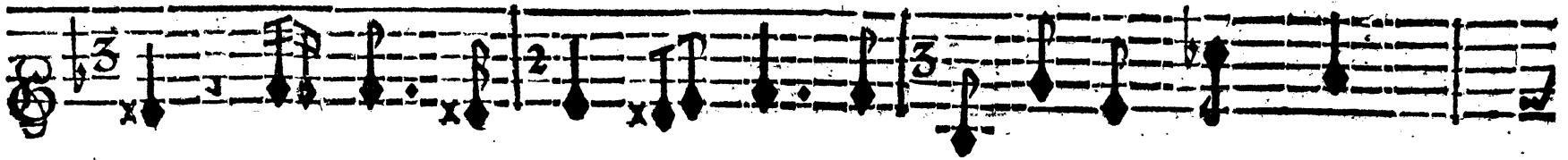
BASSE-CONTINUE.



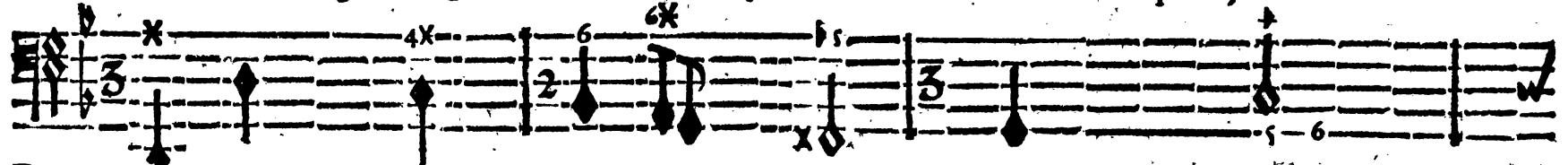
plus; N'aimer plus Pene-lope, ah! mō cœur peux-tu suivre, Le dessein qu'un dépit malgré toy veut for-



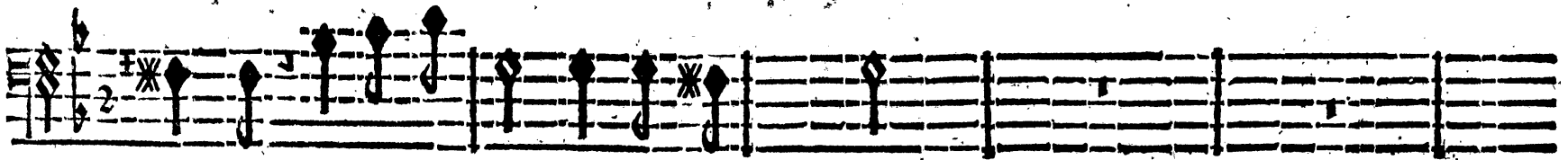
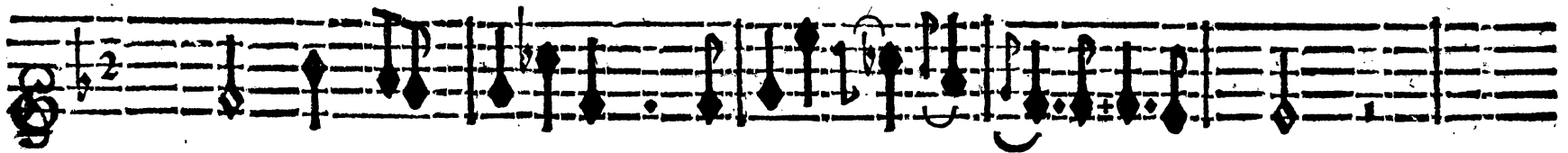
BASSE-CONTINUE.



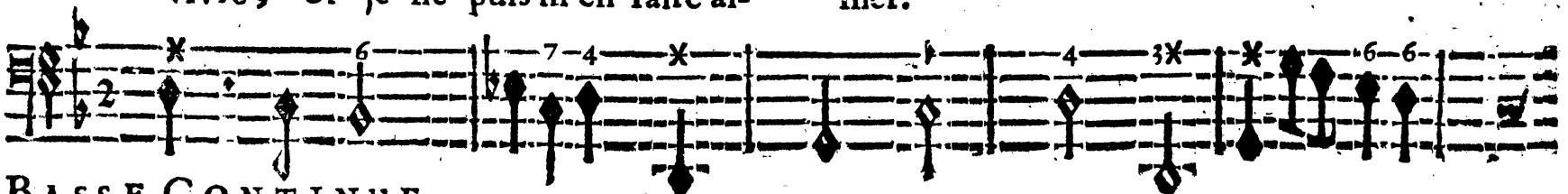
mer, Toute ingratte qu'elle est elle a sçû me charmer; Amour que je cesse de



BASSE-CONTINUE.



vivre, Si je ne puis m'en faire aimer.



BASSE-CONTINUE.

ACTE PREMIER. SCENE II.

SCENE II.

CIRCE, EUPHROSINE, URILAS.

Musical staff for Circe's first line of music, featuring a treble clef and a 3/4 time signature. The melody consists of eighth and sixteenth notes.

CIRCE.

URilas espe- rez, cette beauté severe Ne seras pas toujours insensible à vos

Musical staff for Bass-Continue accompaniment, featuring a bass clef and a 3/4 time signature. It includes figured bass notation with figures such as 6x, 4x, and x.

BASSE-CONTINUE.

Musical staff for Circe's second line of music, featuring a treble clef and a 3/4 time signature. The melody continues with eighth and sixteenth notes.

feux, Pour les Amants qu'on desef- pere, Les charmes de Cir- cé sont des charmes heu-

Musical staff for Bass-Continue accompaniment, featuring a bass clef and a 3/4 time signature. It includes figured bass notation with figures such as 6, 2, 4, and 3.

BASSE-CONTINUE.

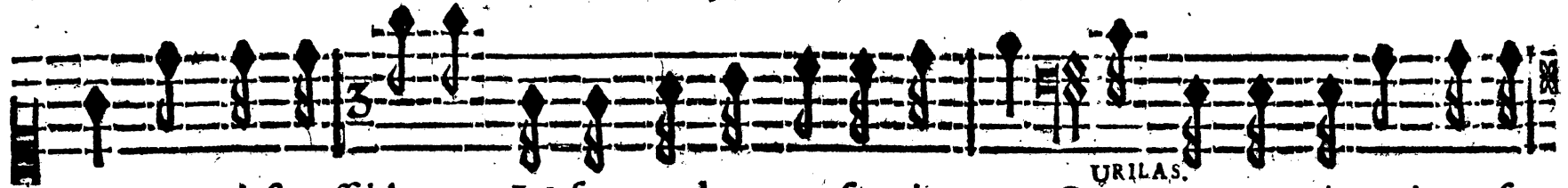
Musical staff for Circe's third line of music, featuring a treble clef and a 3/4 time signature. The melody continues with eighth and sixteenth notes.

CIRCE.

URILAS. reux. Ah! Penelope est inflexible, Rien ne scauroit toucher son cœur. Tout m'obe-

Musical staff for Bass-Continue accompaniment, featuring a bass clef and a 3/4 time signature. It includes figured bass notation with figures such as 6, 7, and 43x.

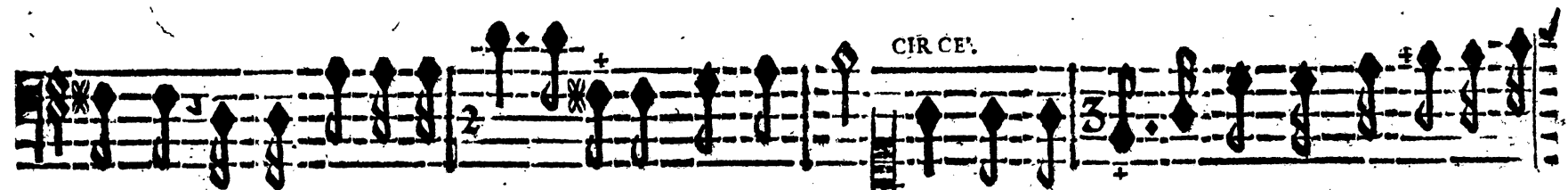
BASSE-CONTINUE.



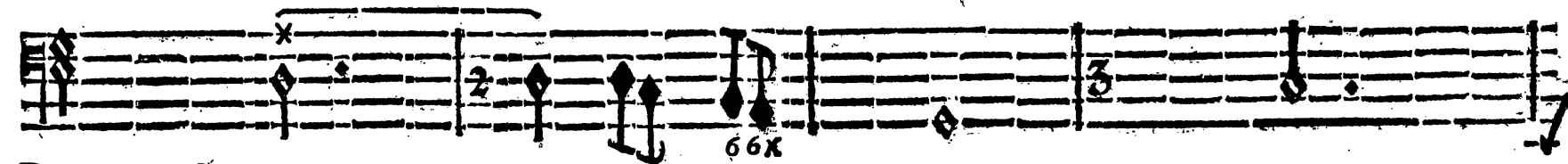
it, tout m'est possible, Je ſçauray dompter ſa rigueur. **URILAS.** Quoy! vous pouriez vaincre ſa



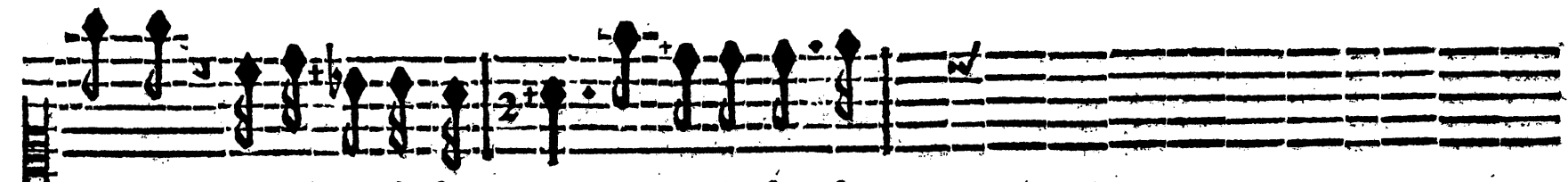
**BASSE-CONTINUE.**



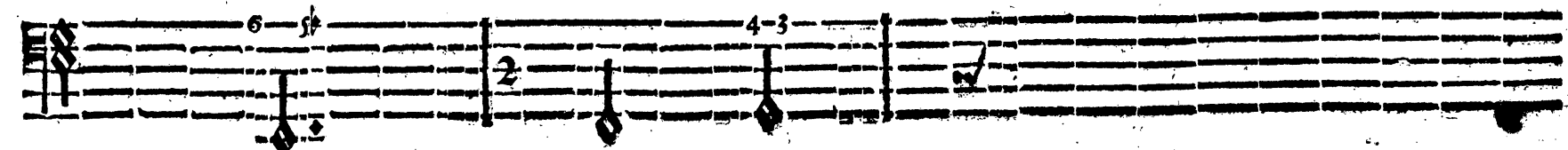
haine, Je verrois ſa fier-té ceder à mon amour. **CIRCE.** Laissez moy ſeule, allez, vous verrez l'inhu-



**BASSE-CONTINUE.**



maine, Soupirer à ſon tour, Avant la fin du

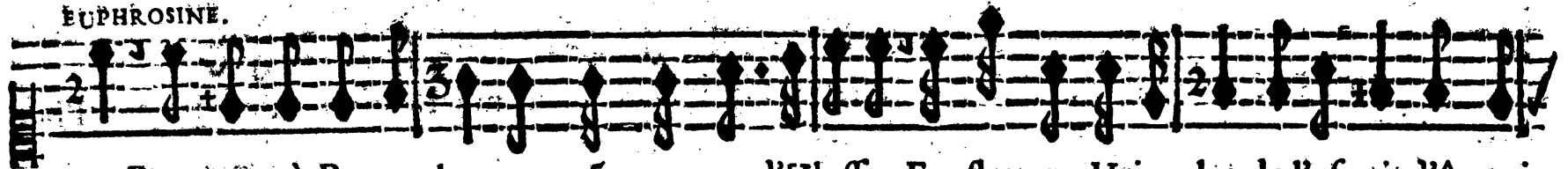


**BASSE-CONTINUE.**

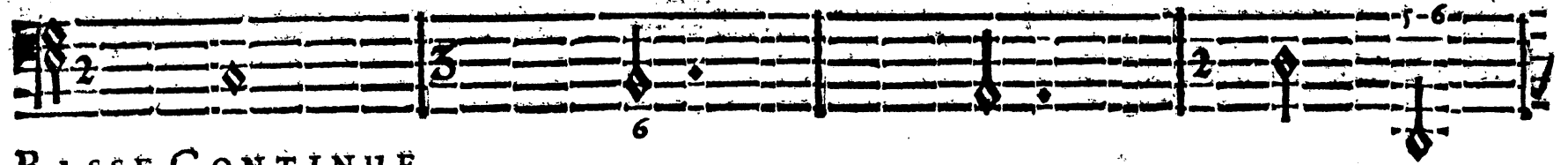
ACTE PREMIER. SCENE III.

SCENE III.  
CIRCE, EUPHROSINE.

EUPHROSINE.



jour. Promettre à Pene-lope un prompt retour d'Ulyffe, Et flatter Uri- las de l'espoir d'être ai-

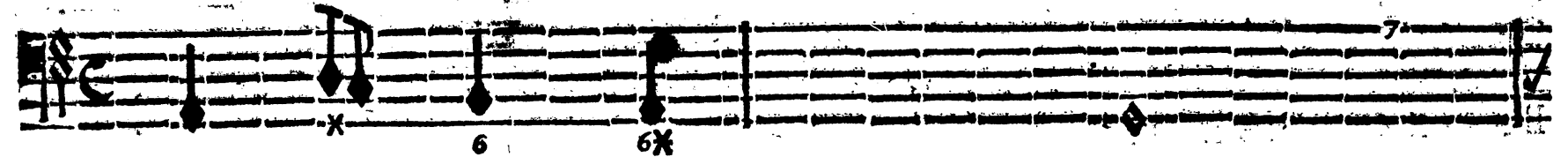


BASSE-CONTINUE.

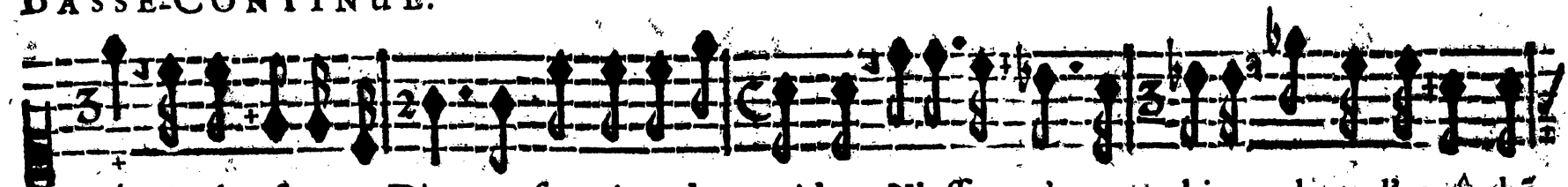
CIRCE.



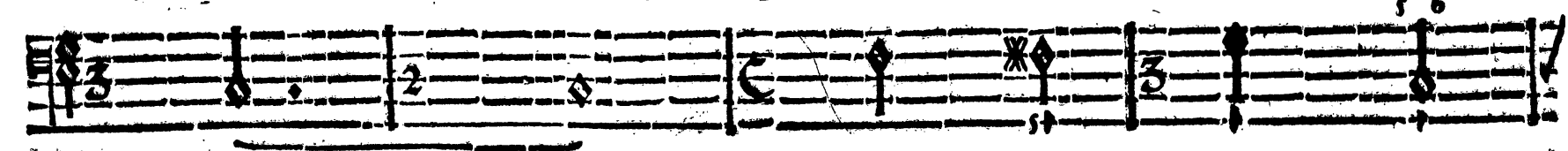
mé, Je ne puis penetrer quel est cet arti- fice, Que ne fait point un cœur par l'Amour ani-



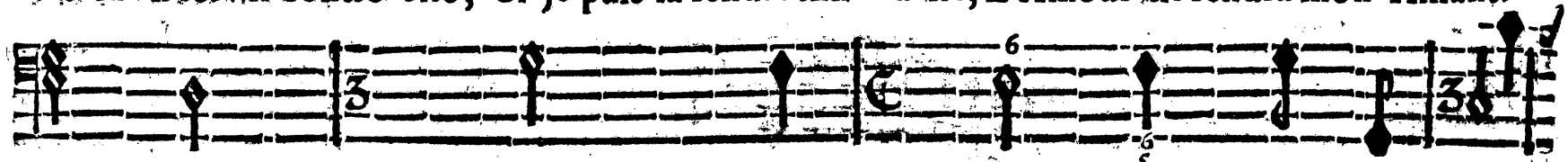
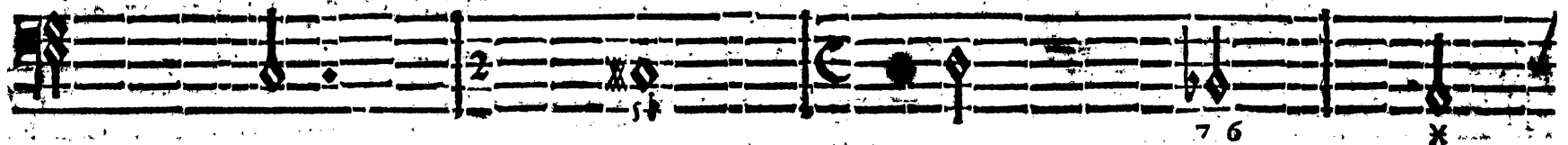
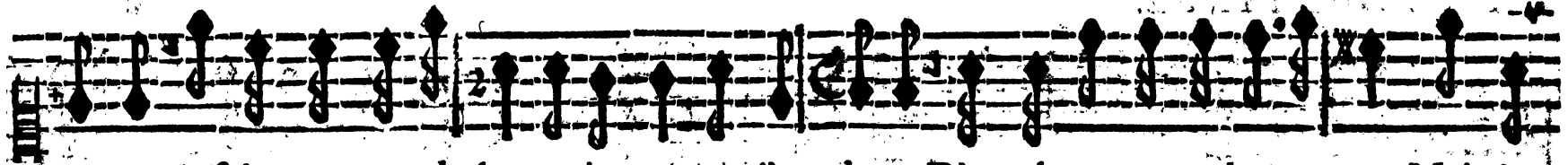
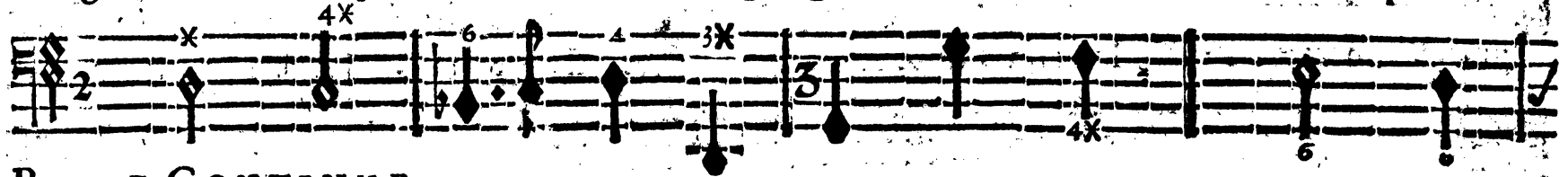
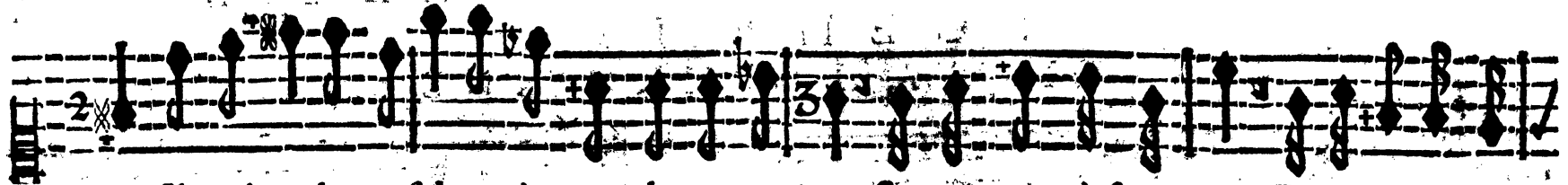
BASSE-CONTINUE.



mé, Euphrosine ce Dieu me sert icy de guide, Ulyffe m'a tra- hic, ah! tu l'as vu chā-



BASSE-CONTINUE.





ACTE PREMIER SCENE III.

EUPHROSINE.



Des charmes de Circé qui pourroit se deffen- dre, Les éléments stivent les



BASSE-CONTINUE.



loix; Quand elle veut se faire entendre, L'Enfer obe- it à sa voix, Des charmes de Cir-

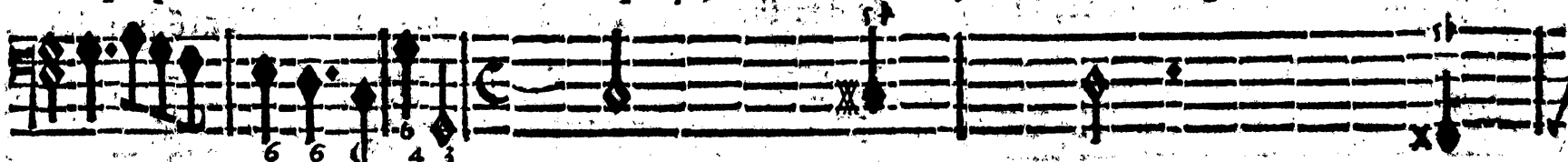


BASSE-CONTINUE.

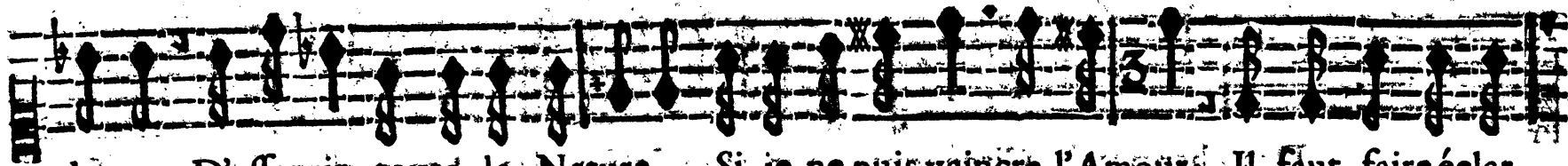
CIRCE.



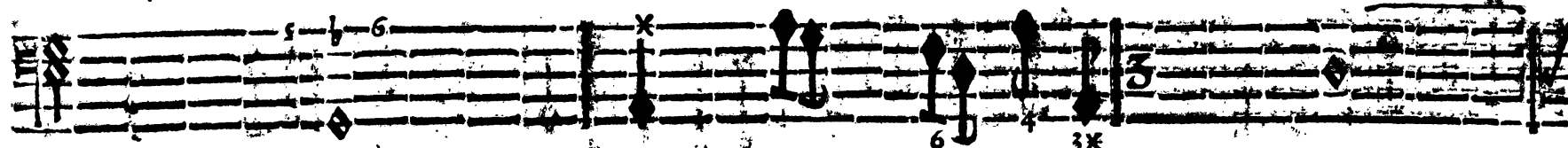
cé qui pourroit se deffen- dre. De quoy me sert-il en ce jour, Pour soulager le tourmêt que j'en-



BASSE-CONTINUE.

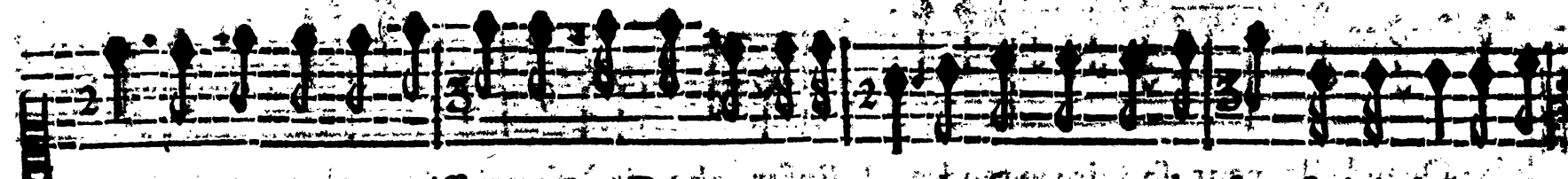


dure, D'asservir toute la Nature, Si je ne puis vaincre l'Amour, Il faut faire éclat-

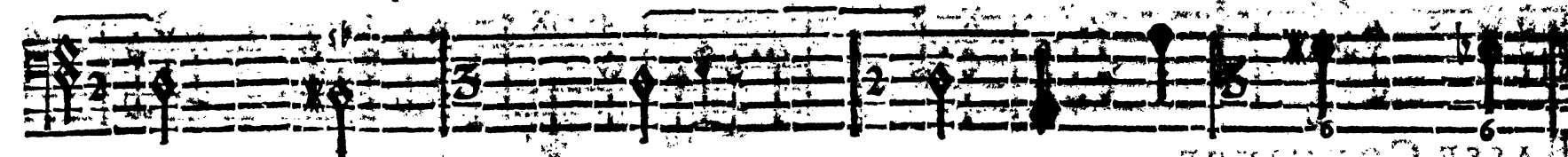


BASSE-CONTINUE.

MUSIQUE DE LA BASSE-CONTINUE



ter mon Art & ma puissance, Les Demons engagez à suivre mes de- sirs : Se joindrôt avec



BASSE-CONTINUE.

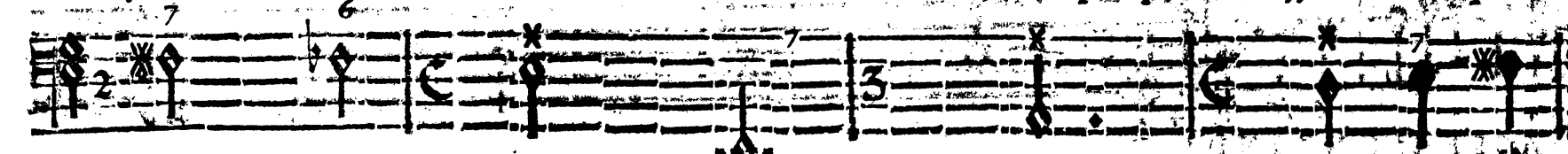
MUSIQUE DE LA BASSE-CONTINUE

ALLEGRO

EUPHRASINE.



moy sous la feinte apa- rence, Des Jeux & des Plaisirs. Penelope pa- roit, je l'entéds qui sou-



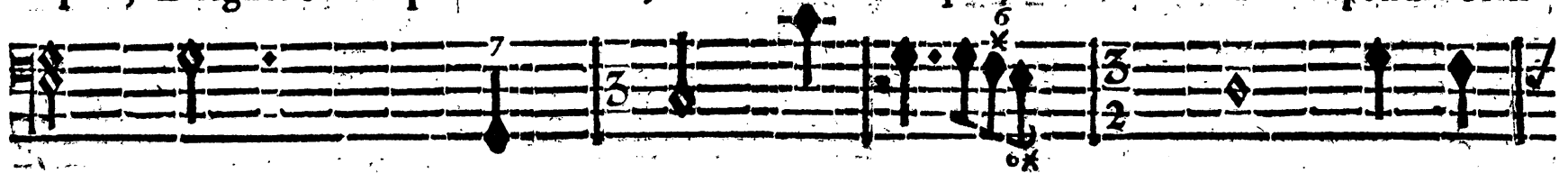
BASSE-CONTINUE.

MUSIQUE DE LA BASSE-CONTINUE

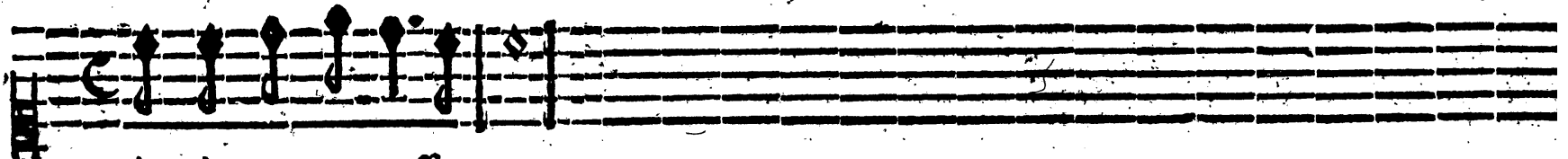
CIRCE.



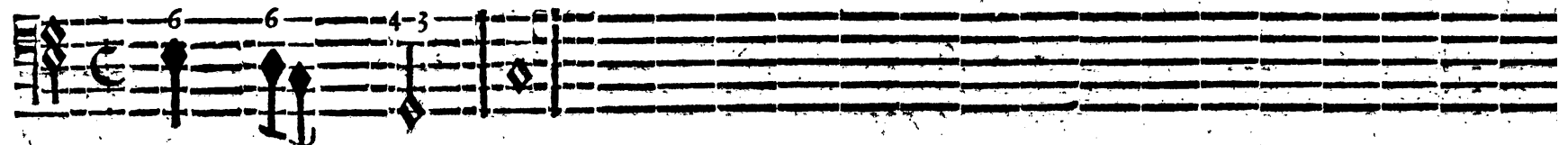
pire, Eloignons-nous pour un momēt, L'heureux instant que je de- sire: Doit répondre bien-



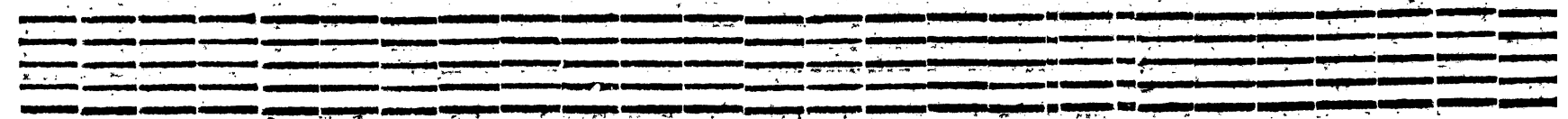
BASSE-CONTINUE.



tôt à mon empressement.



BASSE-CONTINUE.



ULYSSE, TRAGÉDIE.

SCÈNE IV.

PENÉLOPE.

PRELUDE.  
PENÉLOPE.

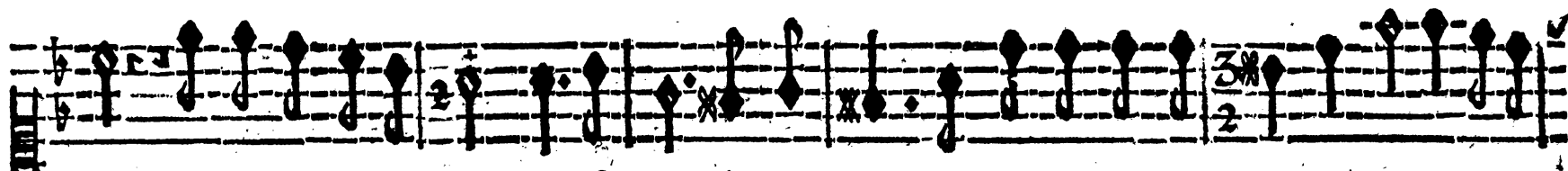
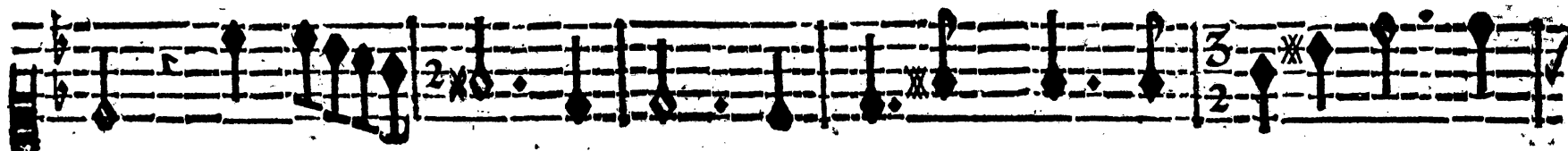
VIOLONS.

Souffri-

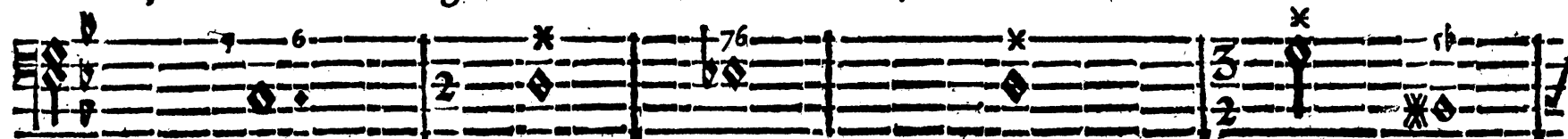
BASSE-CONTINUE.

ray-je toujours les rigueurs de l'absence, Ulysse revenez? hâ- tez votre re-

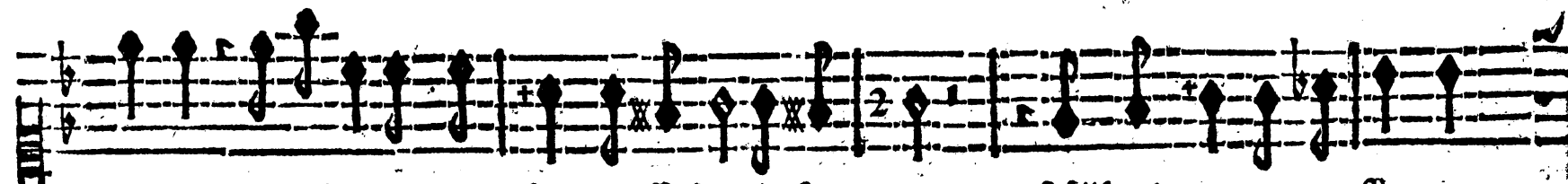
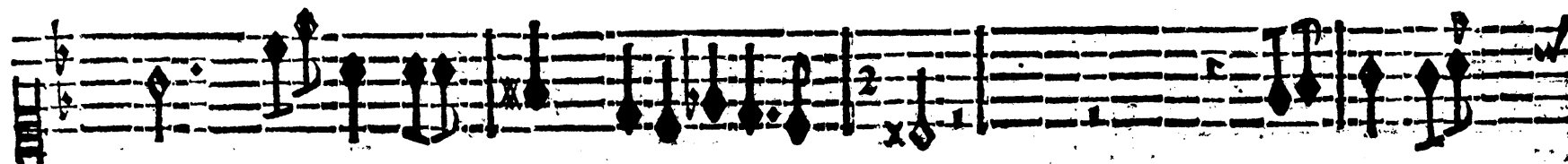
BASSE-CONTINUE.



tour, Abandonnez la gloire en faveur de l'Amour, Venez de mes ennuis calmer la vio-



BASSE-CONTINUE.



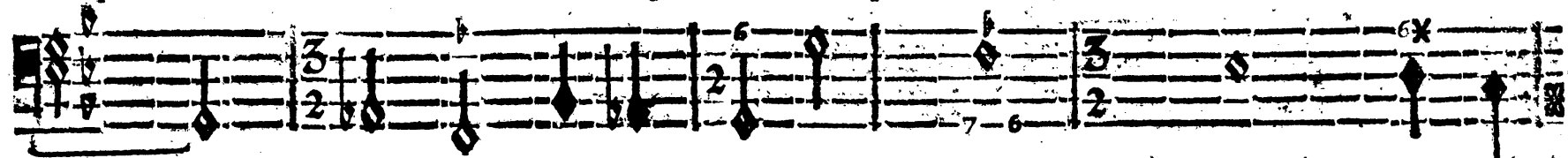
lence, Penelope vous doit posséder à son tour; Mille Amans empressez at-



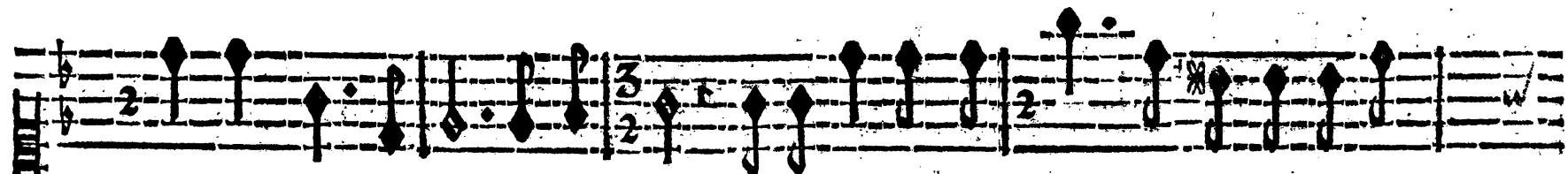
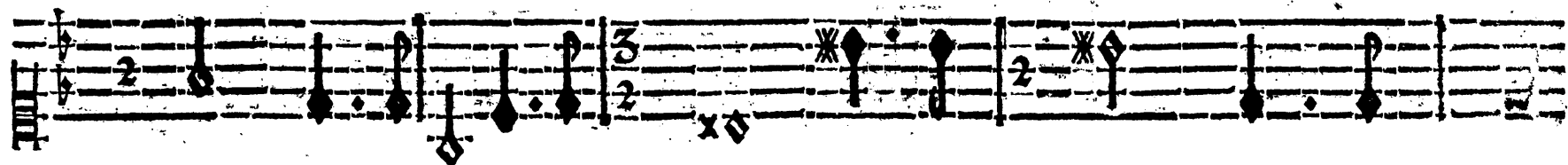
BASSE-CONTINUE.



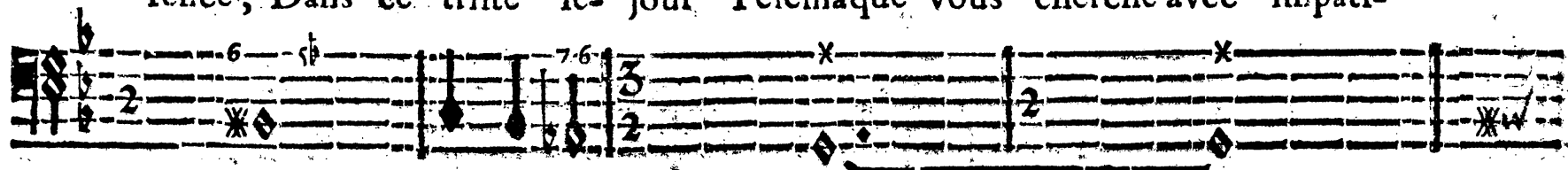
taquent ma constâce, De leurs soins importuns je me plains chaque jour, Et vo<sup>9</sup> me laissez sãs def-



BASSE-CONTINUE.



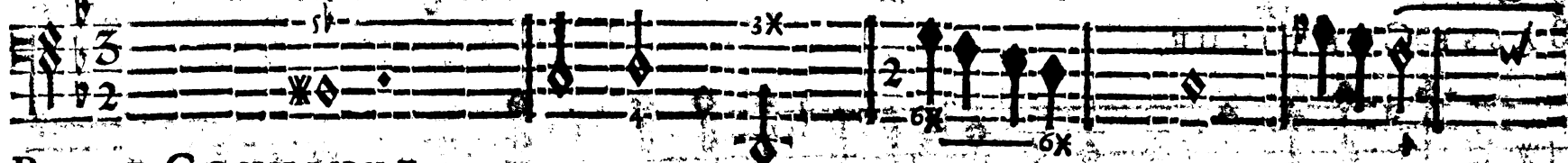
fence, Dans ce triste se- jour Telemaque vous cherche avec impati-



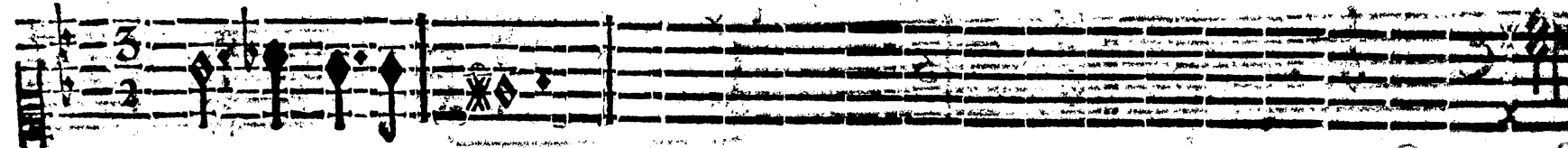
BASSE-CONTINUE.



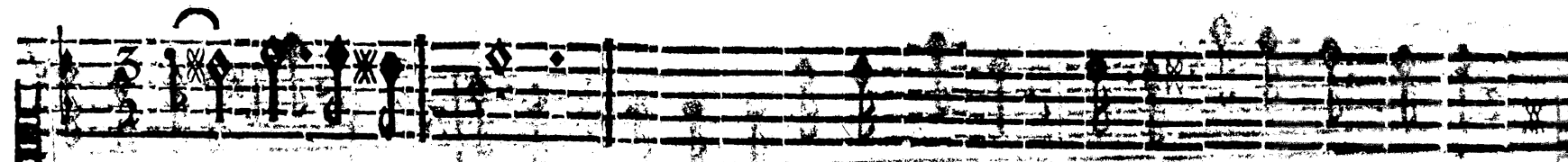
ence, Vos Etats en danger veulent votre pre- sence, Ulyffe revenez? ha-



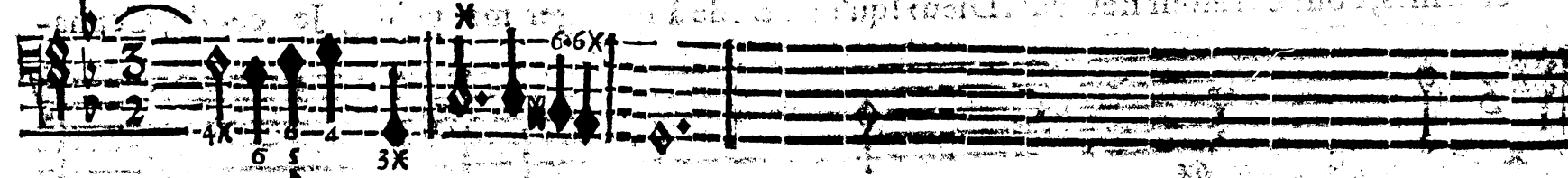
BASSE-CONTINUE.



BASSE-CONTINUE.



tez votre re- tour.

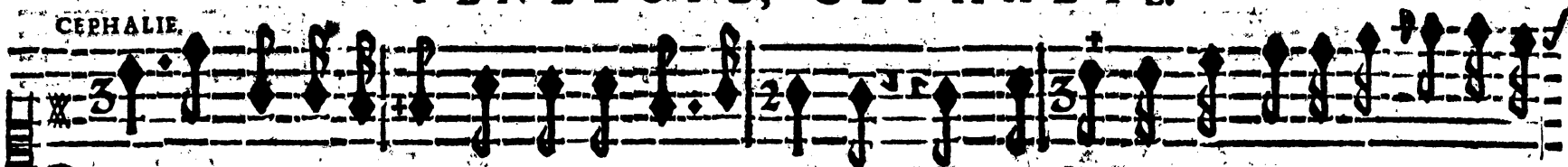


BASSE-CONTINUE.

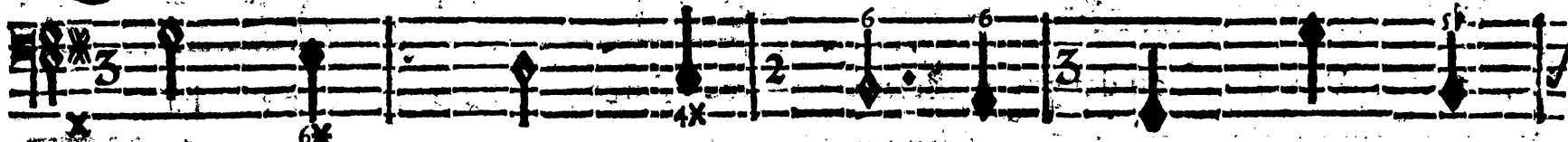
BASSE-CONTINUE.

ULYSSE, TRAGEDIE.  
SCENE V.  
PENELOPE, CEPHALIE.

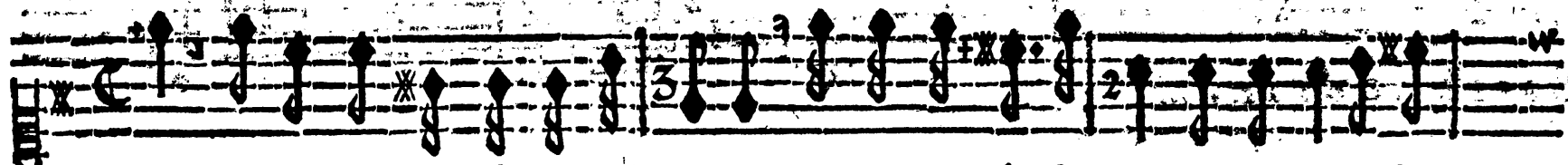
CEPHALIE.



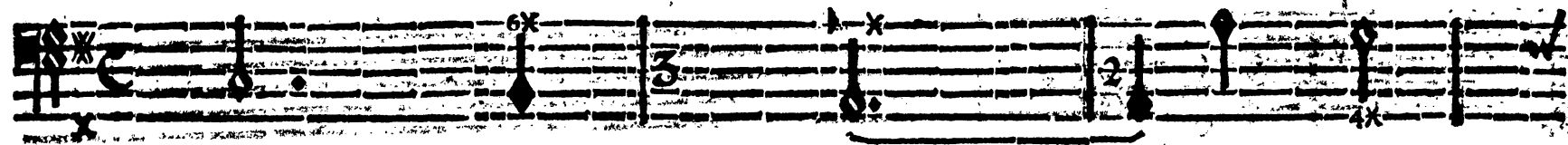
Quoy toujours soupirer, faut- il verser des larmes? Quand Circé vous promet un secours gene-



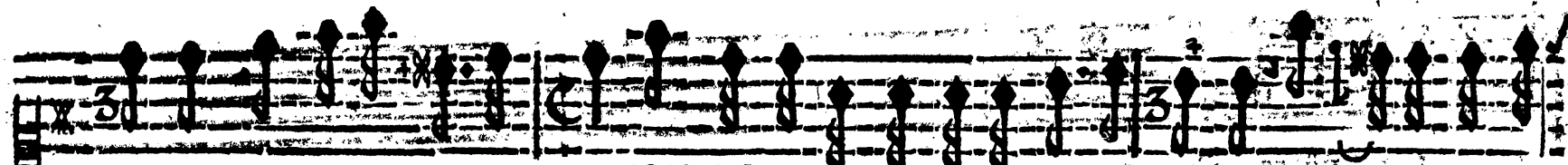
BASSE-CONTINUE.



reux, Sensible au bruit de vos allarmes, Elle a quitté sa Cour & prepare ses

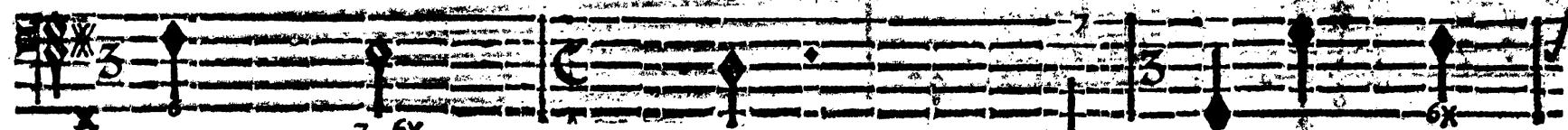


BASSE-CONTINUE.



PENELOPE.

charmes, Pour ce retour heureux. Dieux! qu'elle tarde à soulager ma peine, Je ce-de, Cepha-



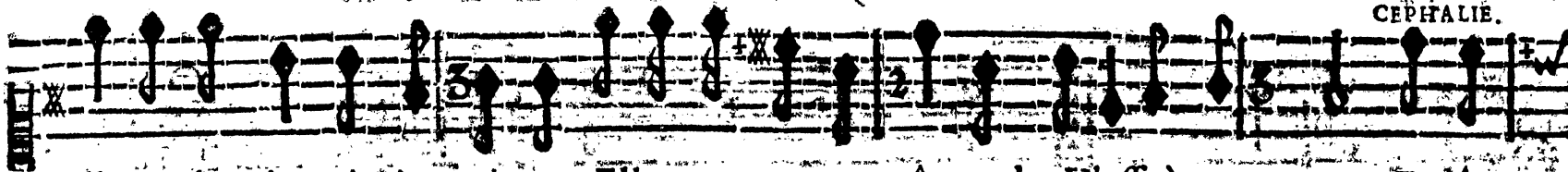
BASSE-CONTINUE.

IMPRIMERIE DE LA BIBLIOTHEQUE



A C T E P R E M I E R . S C E N E V .

CEPHALIE.



lie au chagrin qui m'entraîne, Elle ne peut trop tôt rendre Ulyffe à mes vœux. Ecou-



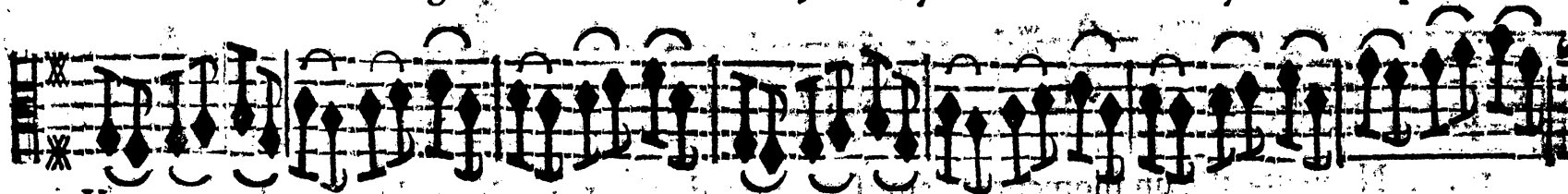
BASSE-CONTINUE.



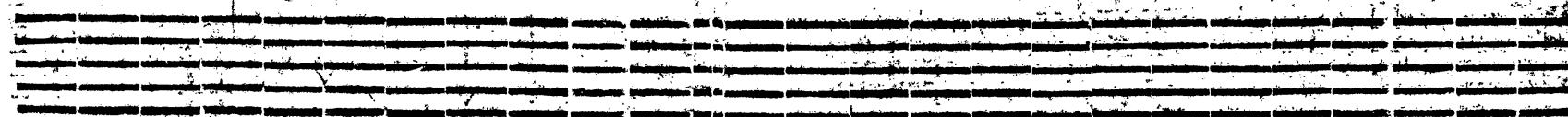
VIOLONS ET FLUTES.



tez de ces eaux l'agre- able murmure, Voyez briller i- cy les plus ai-

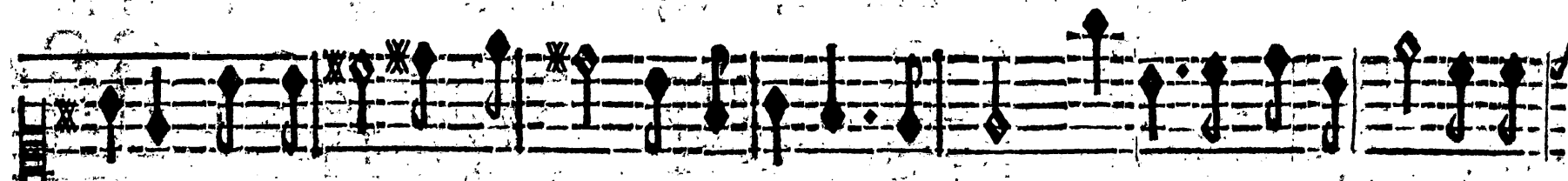
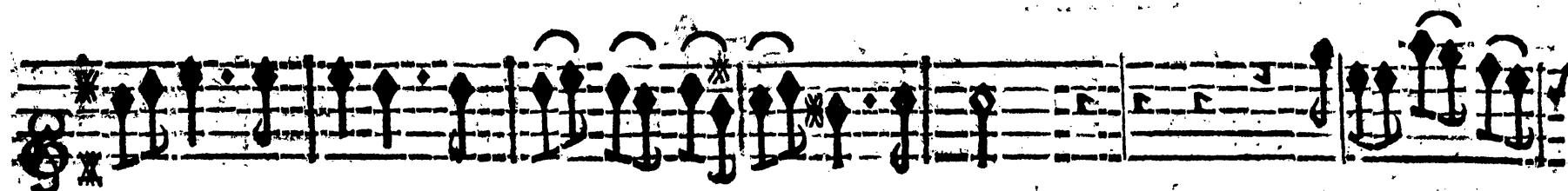


VIOLONS.



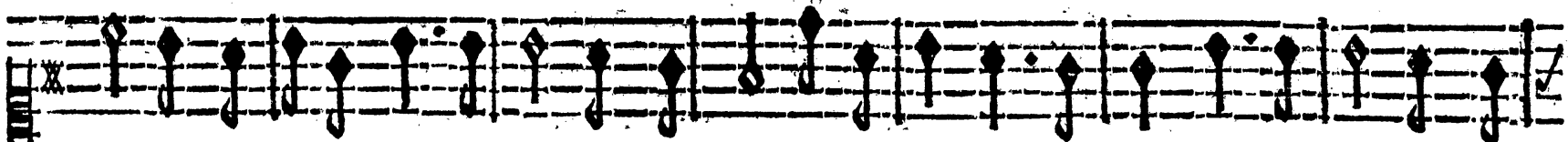


mables fleurs? Ecoû- fleurs? De ces Jardins charmants la riante pa-

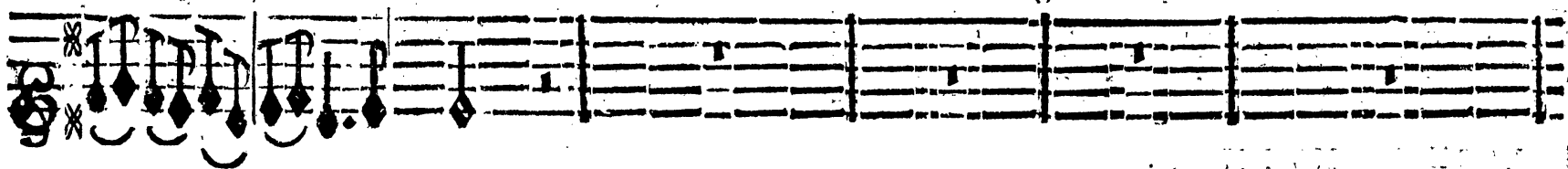


rure, Ne peut-elle un moment amuser vos douleurs; De ces Jardins charmants la ri-

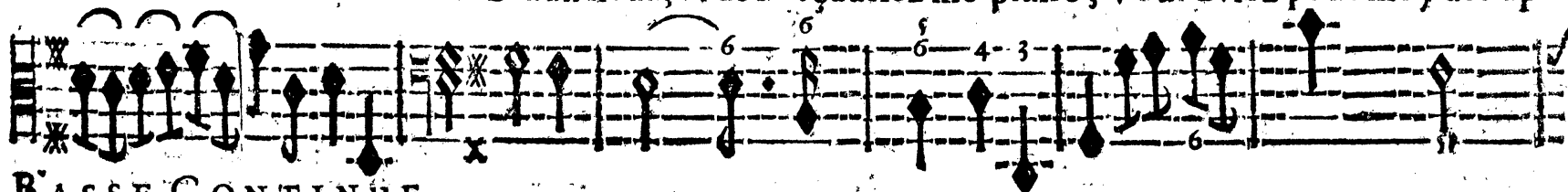




ante pature, Ne peut- elle un moment amuser vos douleurs, Ne peut- elle un mo-



ment amuser vos douleurs. Beaux lieux, vous ne sçautiez me plaire, Vous aviez pour moy des ap-



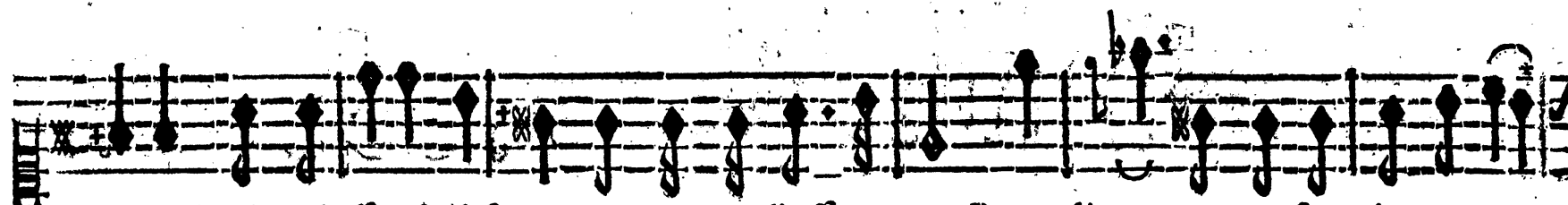
BASSE-CONTINUE.



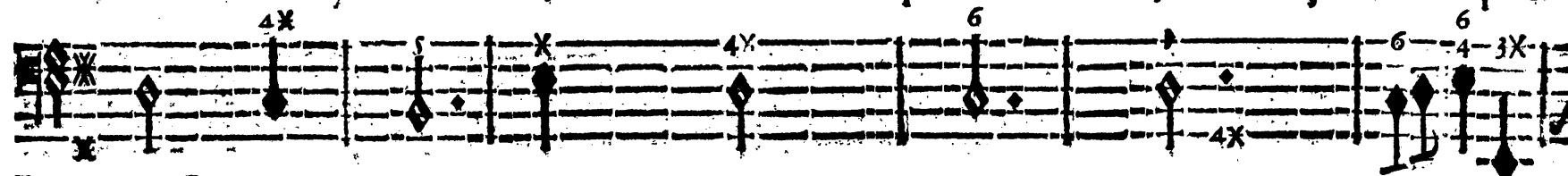
pas; Quand Ulyffe suivoit mes pas, Vous étiez les temoins de nôtre ardeur fin-



BASSE-CONTINUE.



ere: Mais Ulyffe est absent, vous ne me l'offrez pas; Beaux lieux, vous ne sçauriez me plai-



BASSE-CONTINUE.



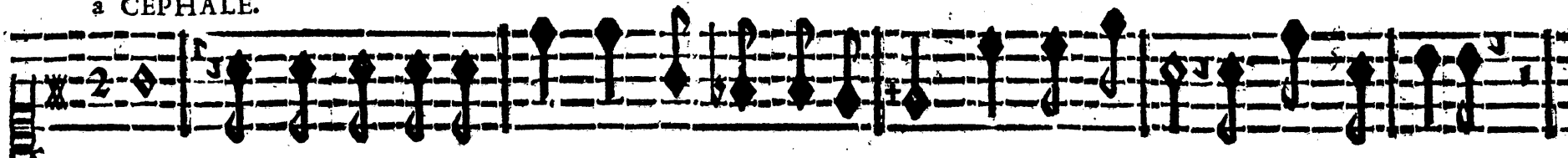
re, Mais Ulyffe est absent, vous ne me l'offrez pas; Beaux lieux, sans luy vo<sup>9</sup> ne sçauriez me plai-



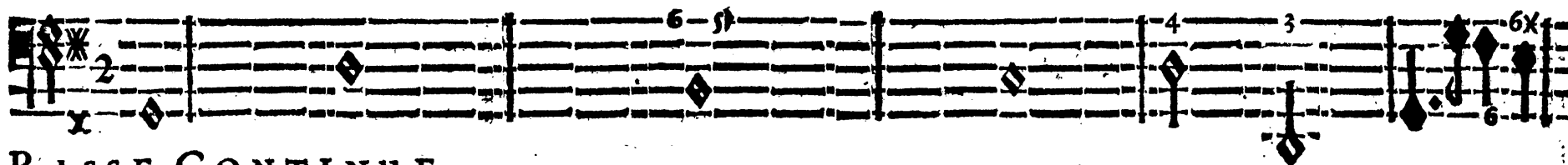
BASSE-COTINUE.

A C T E P R E M I E R. S C E N E V I.

à CEPHALE.



re, Ne me reproche point ces tendres sentiments, Cherche Circé, ma peine augmente.



BASSE-CONTINUE.

S C E N E V I.

PENELOPE seule.

RITOURNELLE.



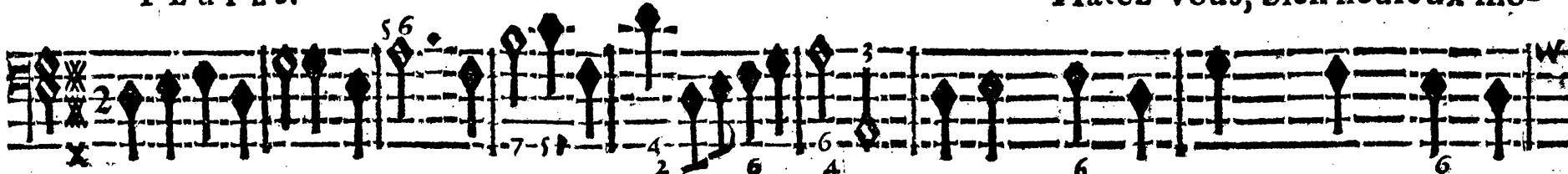
FLÛTES.



PENELOPE.

FLÛTES.

Hâtez-vous, bien heureux mo-



BASSE-CONTINUE.

Musical staff for Flutes, featuring a treble clef, a key signature of one sharp (F#), and a 3/2 time signature. The staff contains a series of notes and rests, with some notes marked with a diamond symbol.

FLÛTES.

Musical staff for Flutes, continuing the previous staff. It includes a treble clef, a key signature of one sharp, and a 3/2 time signature. The notation includes notes, rests, and diamond symbols.

ments, Ah ! satisfaites mon atten- te. FLÛTES. Que ma dou-

Musical staff for Bass Continuo, featuring a bass clef, a key signature of one sharp, and a 3/2 time signature. The staff contains notes and rests with various figured bass notations such as 6, 4, 7-5, 2, 6, 4, and 3.

BASSE-COTINUE.

Musical staff for Flutes, continuing the previous staff. It includes a treble clef, a key signature of one sharp, and a 3/2 time signature. The notation includes notes, rests, and diamond symbols.

Musical staff for Flutes, continuing the previous staff. It includes a treble clef, a key signature of one sharp, and a 3/2 time signature. The notation includes notes, rests, and diamond symbols.

leur impatiente, Me cause de cruels tourmens, Halez-vous, bien heureux mo-

Musical staff for Bass Continuo, featuring a bass clef, a key signature of one sharp, and a 3/2 time signature. The staff contains notes and rests with various figured bass notations such as 6, 6, 4, 3, 6, and 6.

BASSE-CONTINUE.

ments, Ah! satis- faites mon atten- te!

BASSE-CONTINUE.

SCENE VII.

CIRCE, EUPHROSINE, PENELOPE, CEPHALIE.

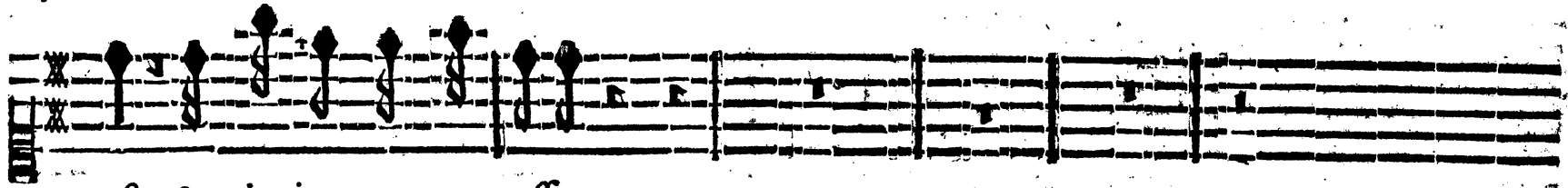
Elle continue à CIRCE.

Helas! belle Princeffe, Ne rendez-vous jamais Ulyffe à mes foupirs, Vous me l'avez pro-

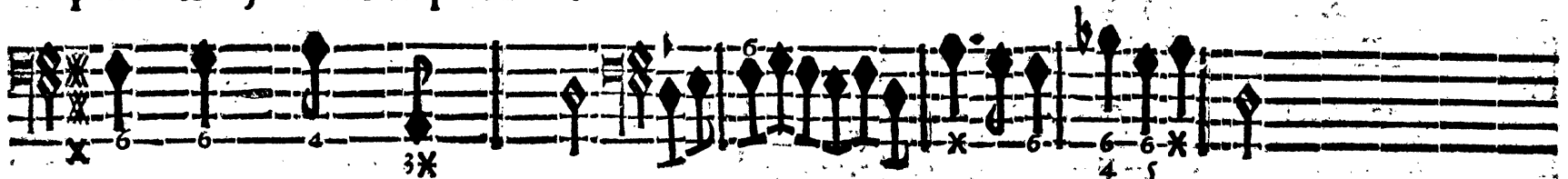
BASSE-CONTINUE.

mis La pitié vous en presse, Ne faites plus languir mes trop justes desirs. Le charme est

BASSE-CONTINUE.



prest & je tiens ma promesse.



BASSE-CONTINUE.

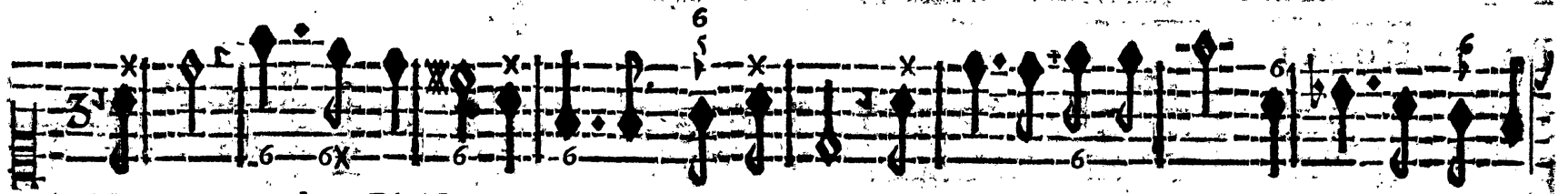
PRELUDE.



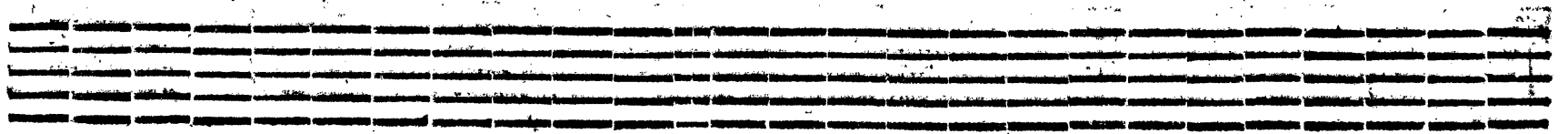
FLUTES.



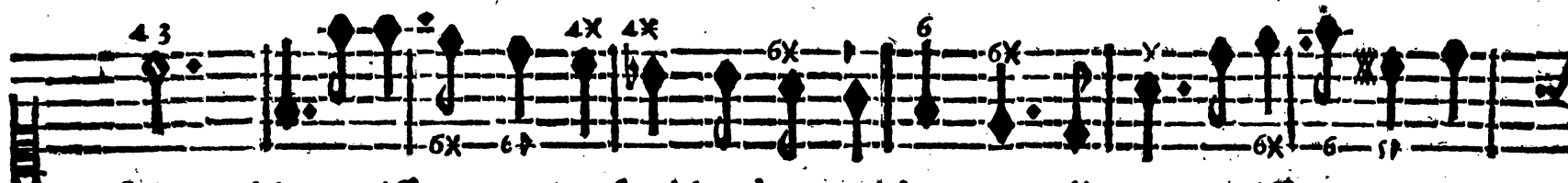
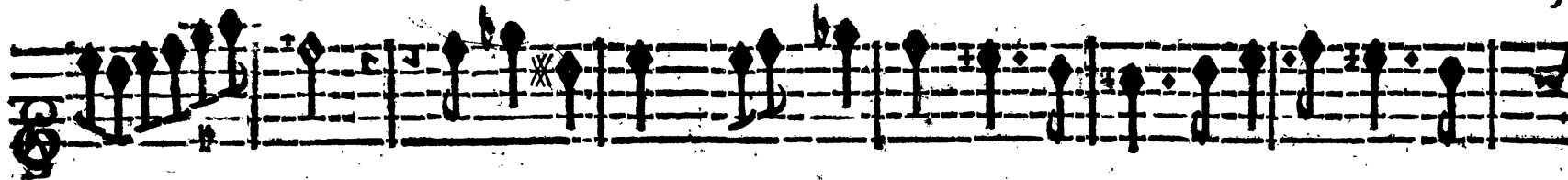
FLUTES.



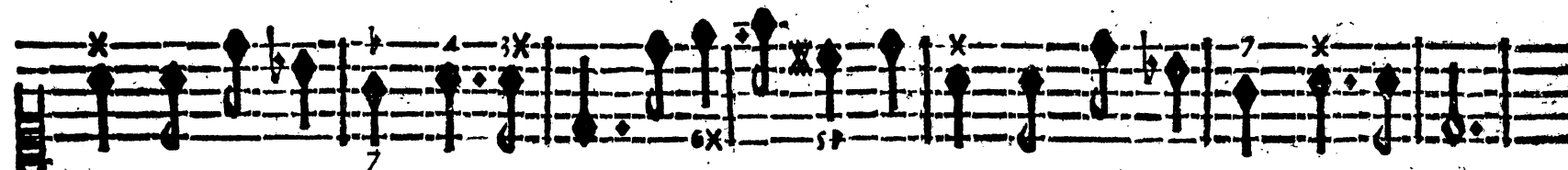
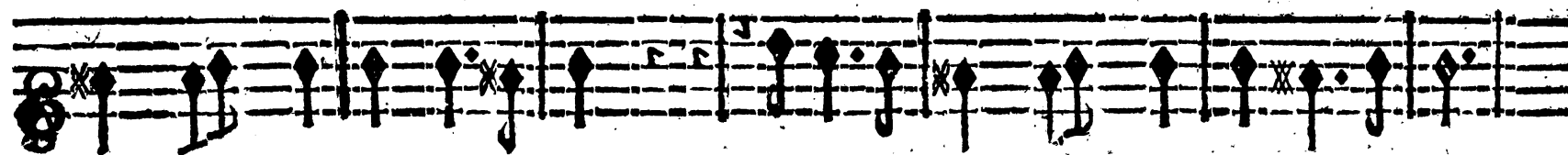
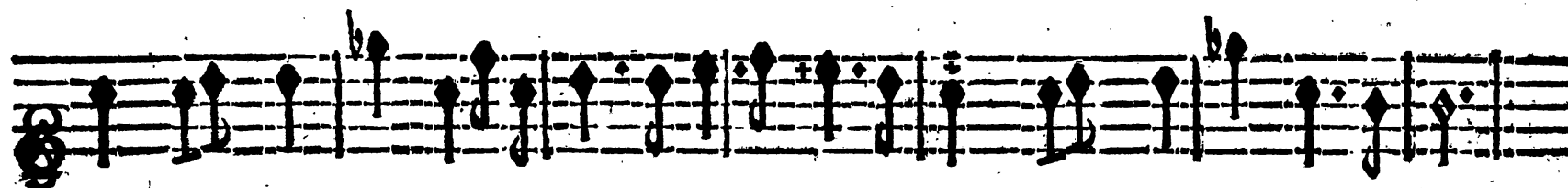
Venez, tendres Plaisirs, avec tous vos appas, Venez aimables Jeux, c'est moy qui vo' af-







sem- ble, Unissez-vous ensemble dans ces charmants climats, Unissez-vous en-

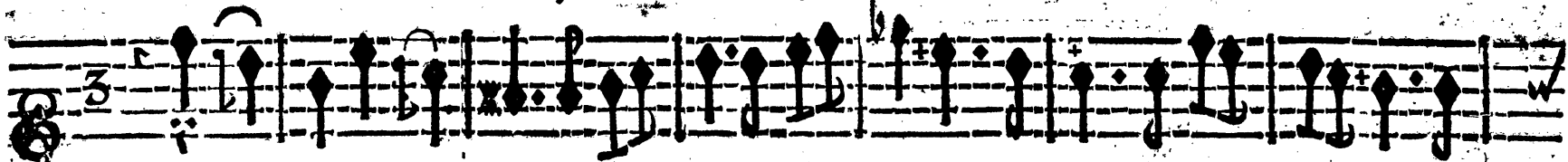


semble dans ces charmants climats, Unissez-vous ensemble dans ces charmants climats.

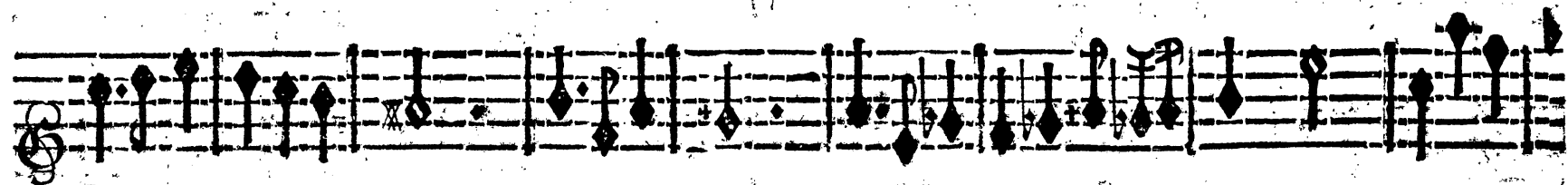
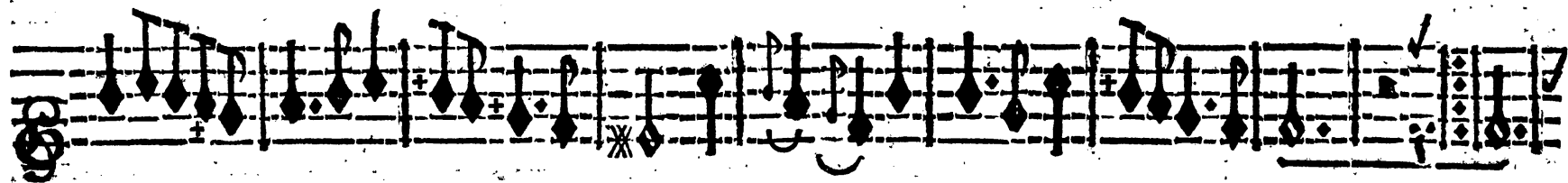
*Les Genies que Circé a engagez paroissent sous la forme de Jeux, & de Plaisirs.  
Ils apportent des Corbeilles de Fleurs où le charme est renfermé.*

S C E N E V I I I.

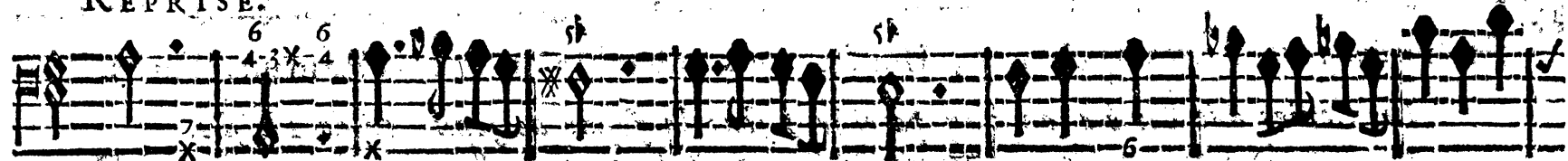
Troupe de Genies, & les Chœurs.



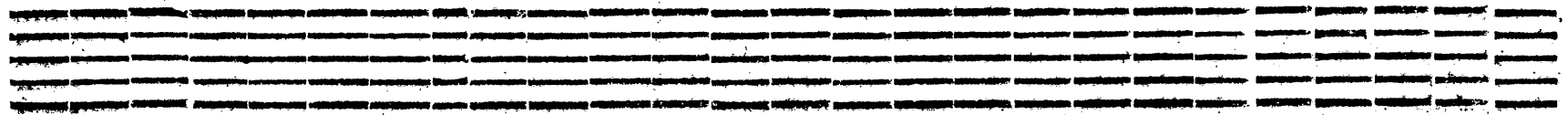
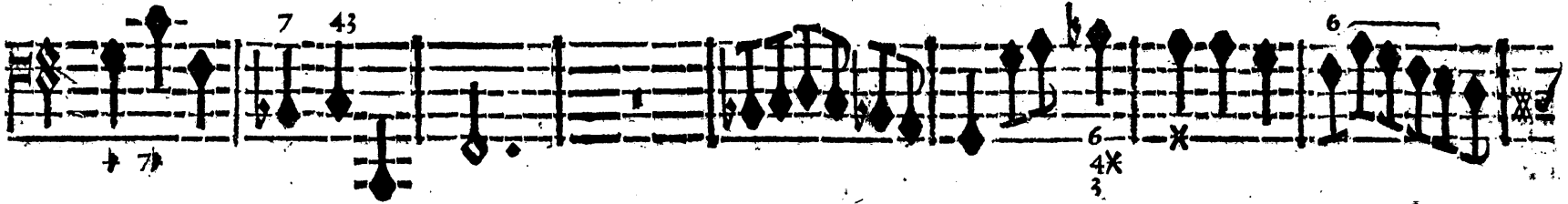
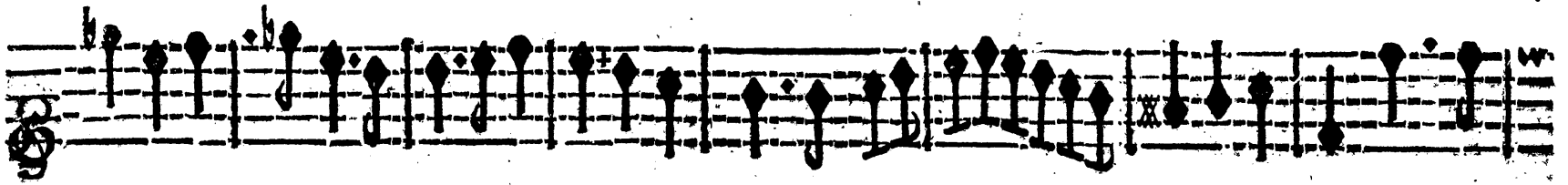
AIR DES GENIES.



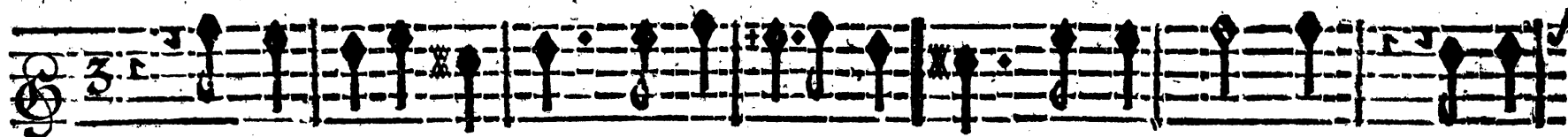
REPRISE.



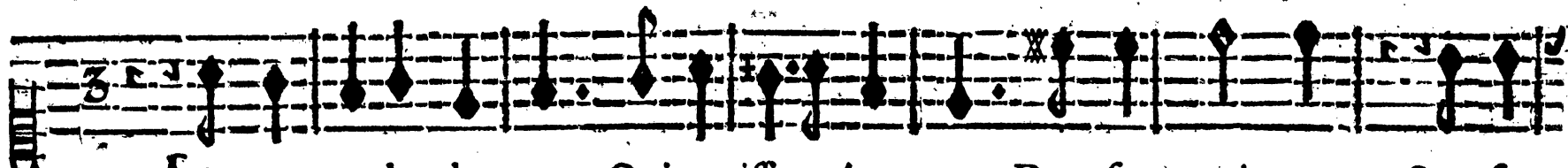
ACTE PREMIER. SCENE VIII.



## PETIT CHOEUR.



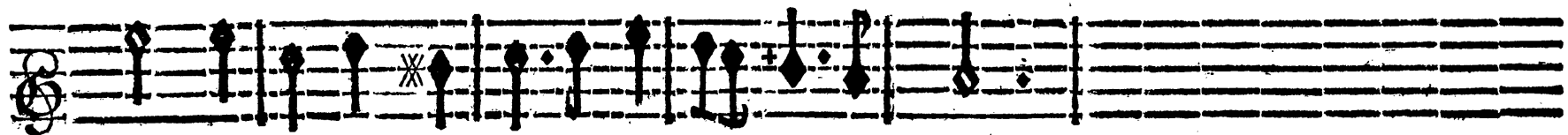
L'Amour a des douceurs, Qui ravissent les cœurs: Dans ses peines, Sous ses



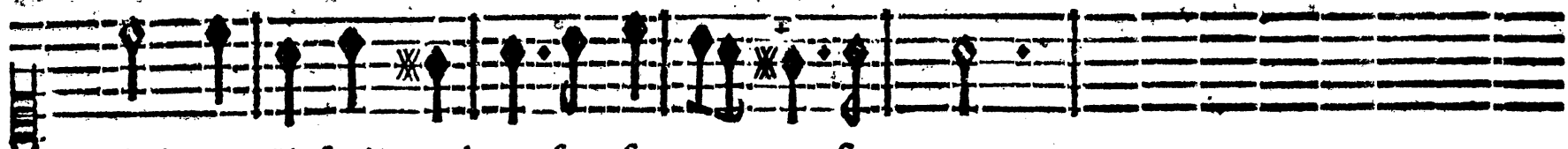
L'Amour a des douceurs, Qui ravissent les cœurs: Dans ses peines, Sous ses



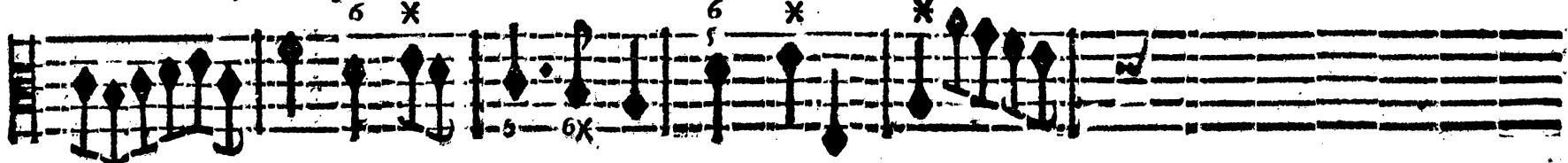
BASSE-CONTINUE.



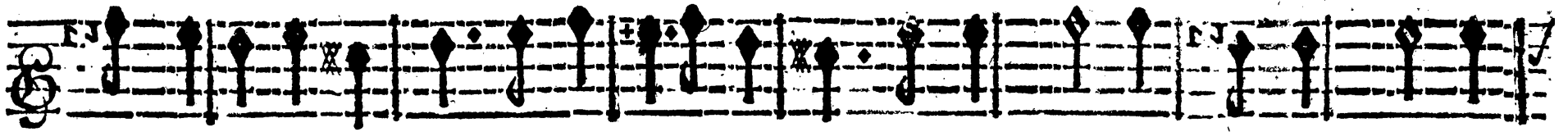
chaînes, Il sçait cacher ses secret- tes fa- veurs.



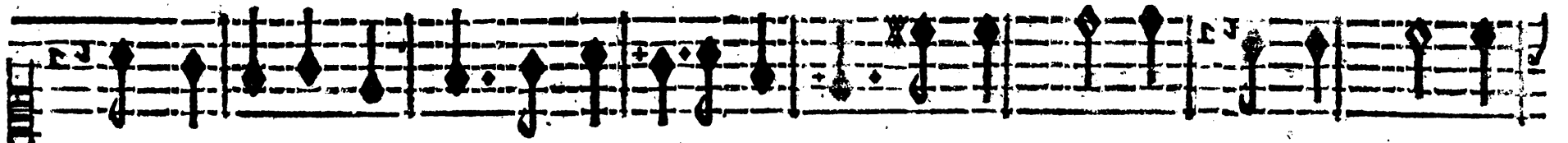
chaînes, Il sçait cacher ses secret- tes fa- veurs.



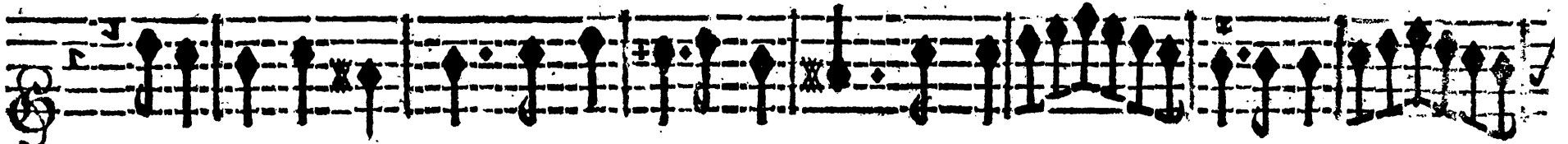
BASSE-CONTINUE.



L'Amour a des douceurs, Qui ravissent les cœurs: Dans ses peines, Sous ses chaînes,



L'Amour a des douceurs, Qui ravissent les cœurs: Dans ses peines, Sous ses chaînes,



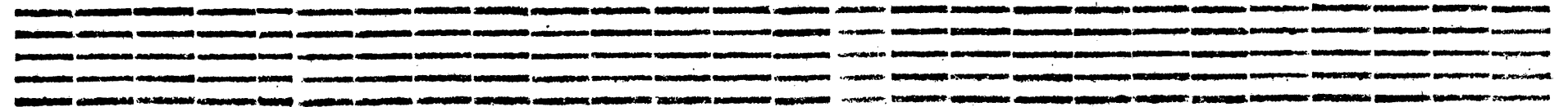
FLÛTES ET VIOLONS.

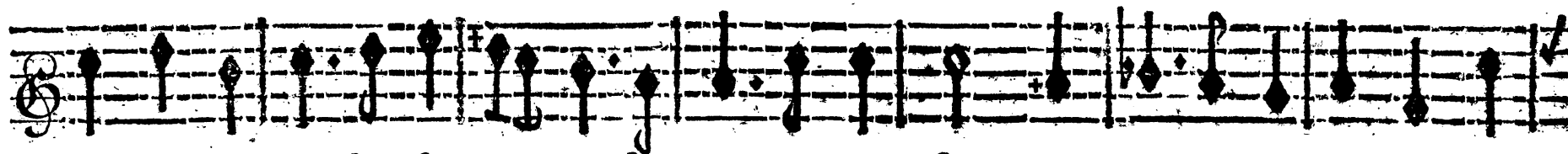


FLÛTES ET VIOLONS.

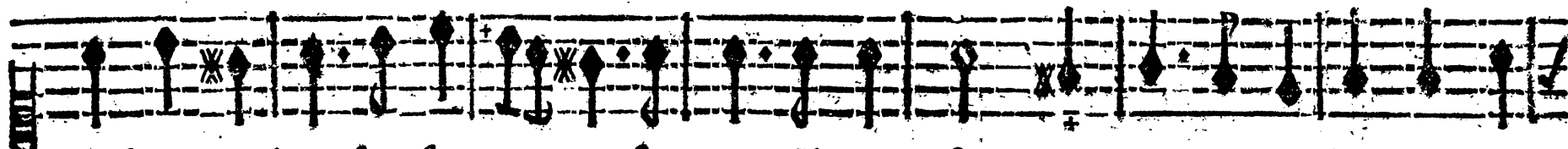


BASSE-CONTINUE.

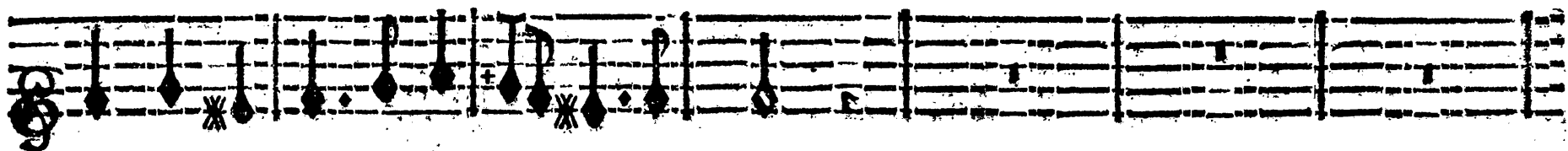
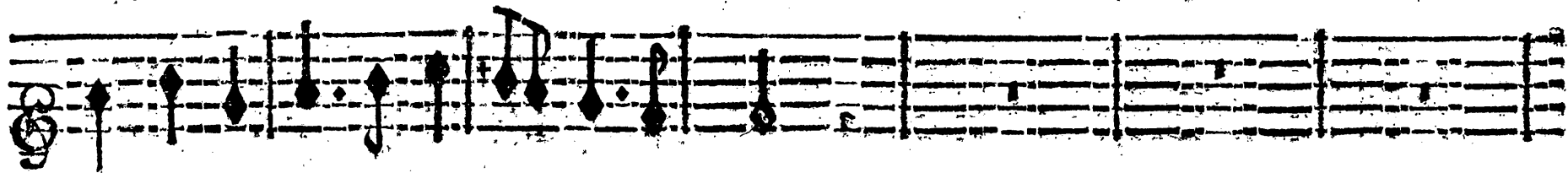




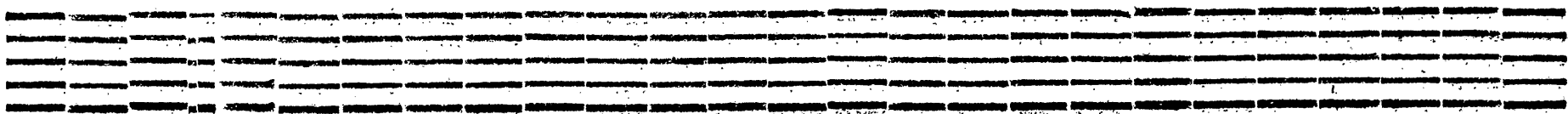
Il sçait cacher ses secret- tes faveurs: Il nous fait trouver mille charmes, Jus-

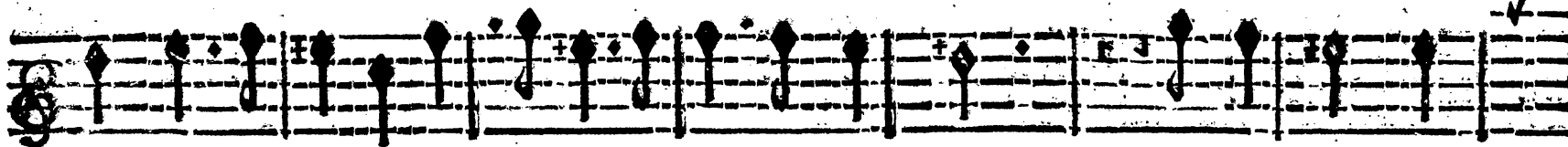


Il sçait cacher ses secret- tes faveurs: Il nous fait trouver mille charmes, Jus-

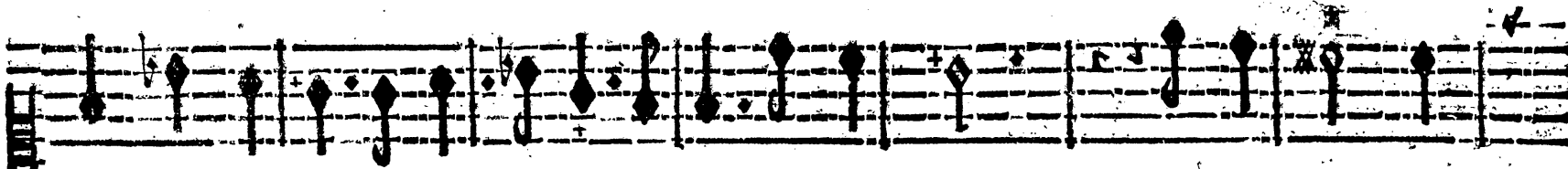


BASSE CONTINUE.





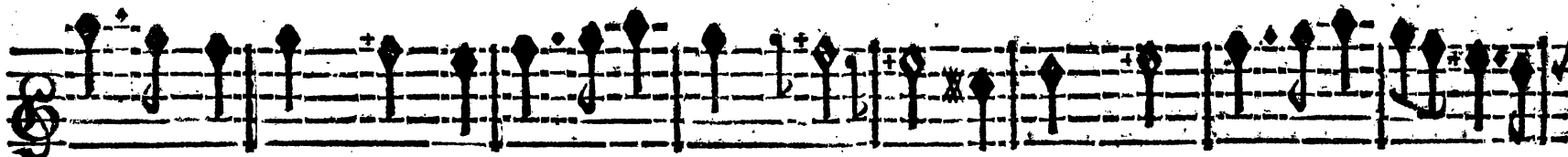
ques dans les larmes, Et dans les soupirs; Ses plai- firs, Son at- tente,



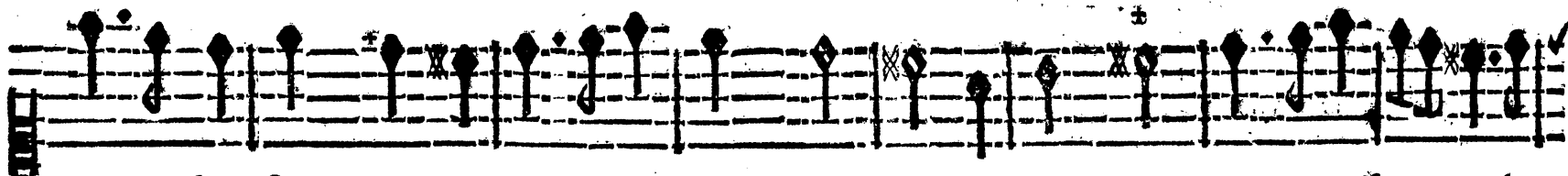
ques dans les larmes, Et dans les soupirs; Ses plai- firs, Son at- tente,



BASSE-CONTINUE.



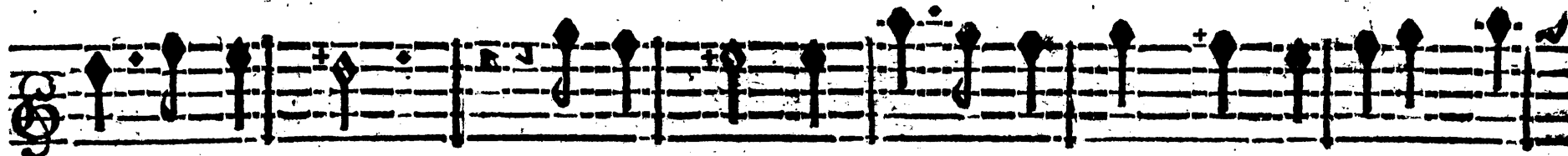
Ses tendres soins, tout enchante, Tout doit ay- mer, Rien n'en e- xempte, Laissez-vo<sup>9</sup> char-



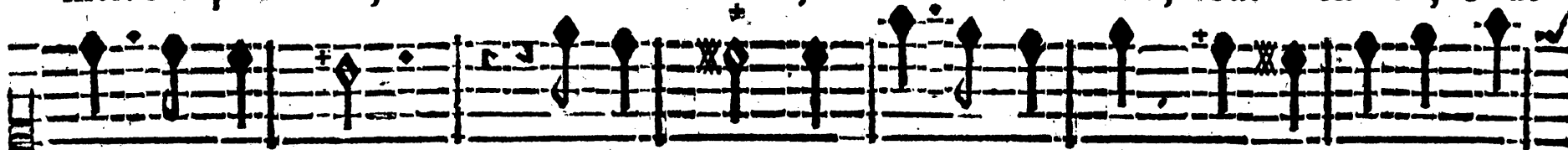
Ses tendres soins, tout enchante, Tout doit ay- mer Rien n'en e- xempte, Laissez-vo<sup>9</sup> char-



BASSE-CONTINUE.



mer. Ses plai- firs, Son at- tente, Ses tendres soins, tout enchante, Tout



mer. Ses plai- firs, Son at- tente, Ses tendres soins, tout enchante, Tout



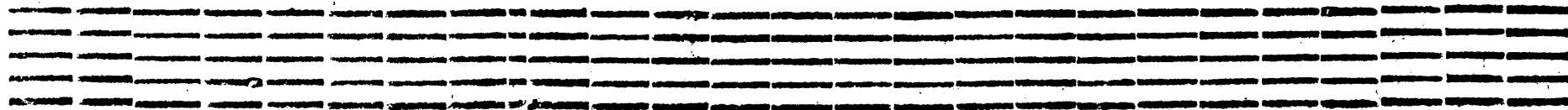
FLÛTES ET VIOLONS.



FLÛTES ET VIOLONS.



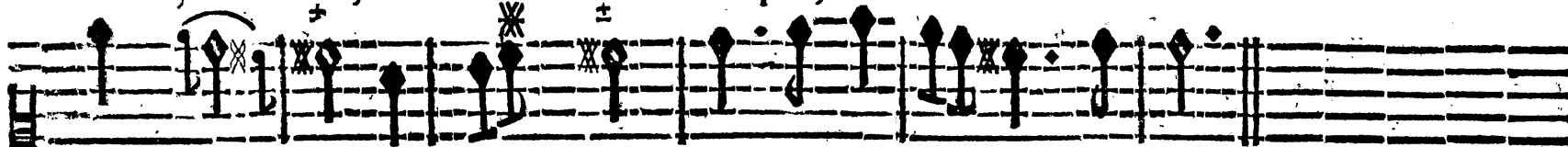
BASSE-CONTINUE.



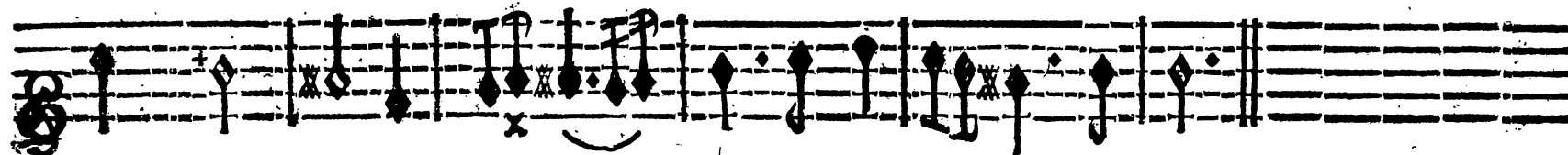
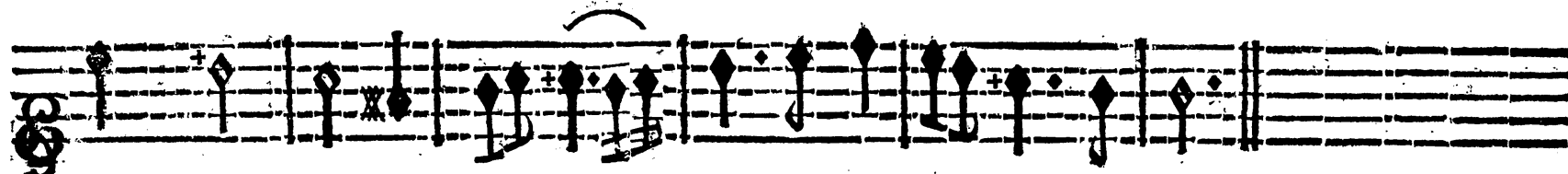




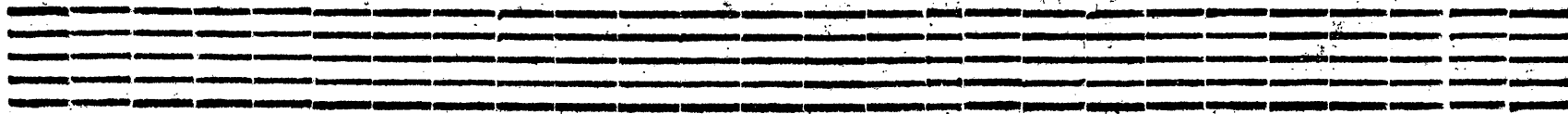
doit ay-mer, Rien n'en e-xempte, Laissez - vous charmer.



doit ay-mer, Rien n'en e-xempte, Laissez - vous charmer.

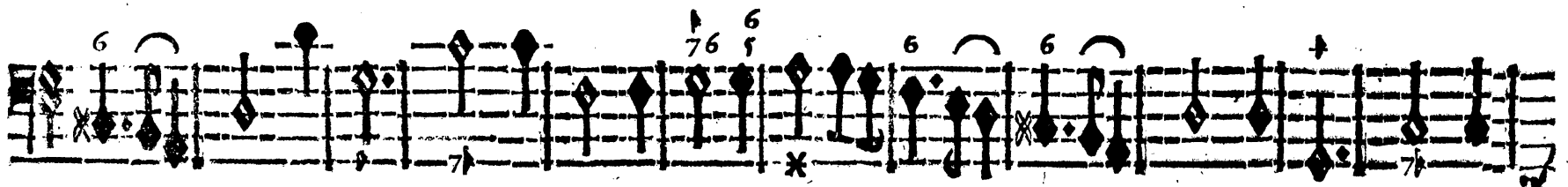
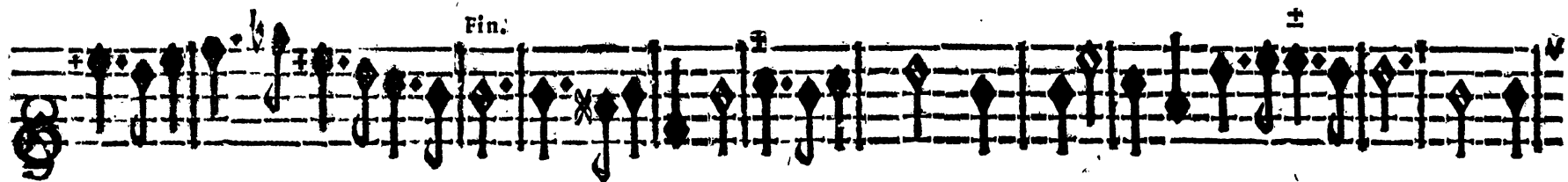


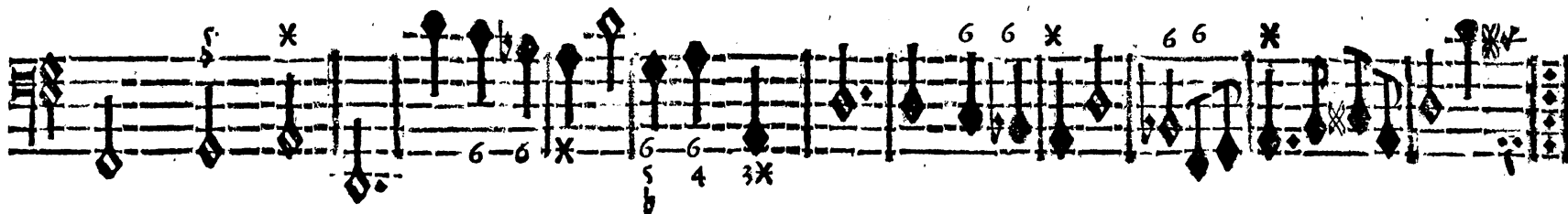
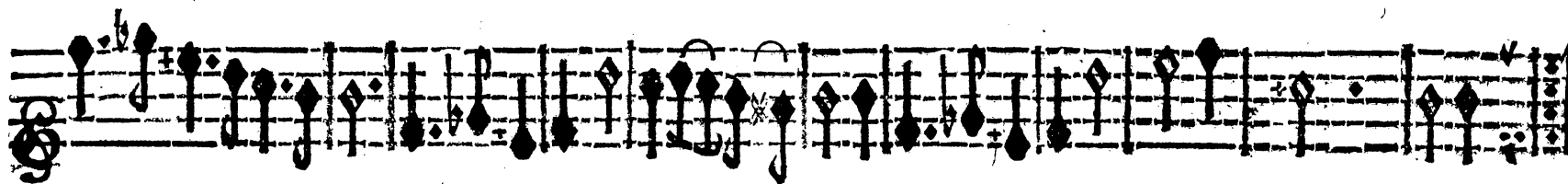
BASSE-CONTINUE.





RONDEAU.





UN GENIE;



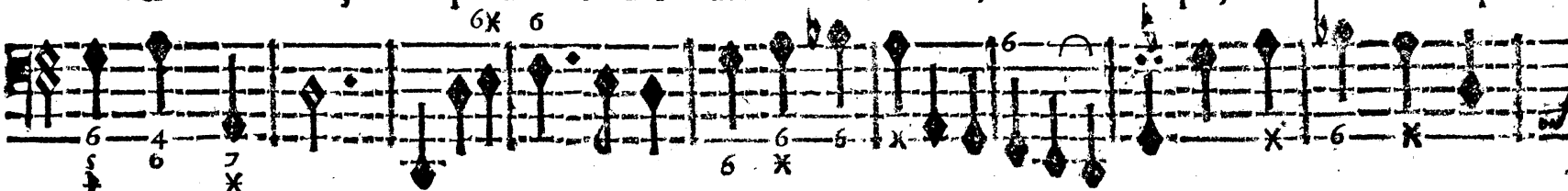
Il est temps, l'Amour vous appelle, Vous devez répondre à sa voix; Il deffend d'avoir



BASSE-CONTINUE.

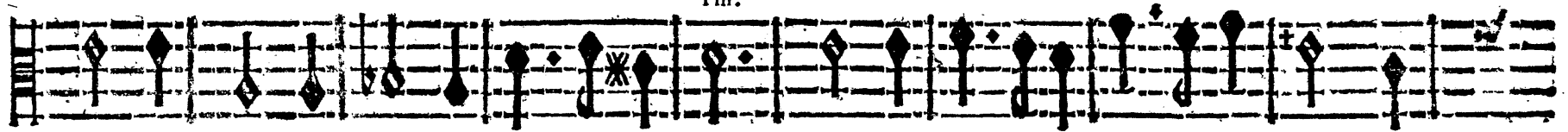


un cœur rebelle, Et permet de faire un second choix; Il est temps, l'Amour vous ap-



BASSE-CONTINUE.

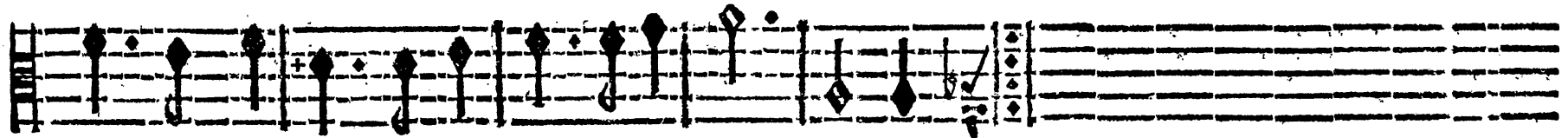
Fin.



celle, Vous devez répondre à sa voix. Epreuvez une âme nouvel- le?



BASSE-CONTINUE.



Ah! qu'il est doux de changer une fois! Il est, &c. jusqu'au mot fin.

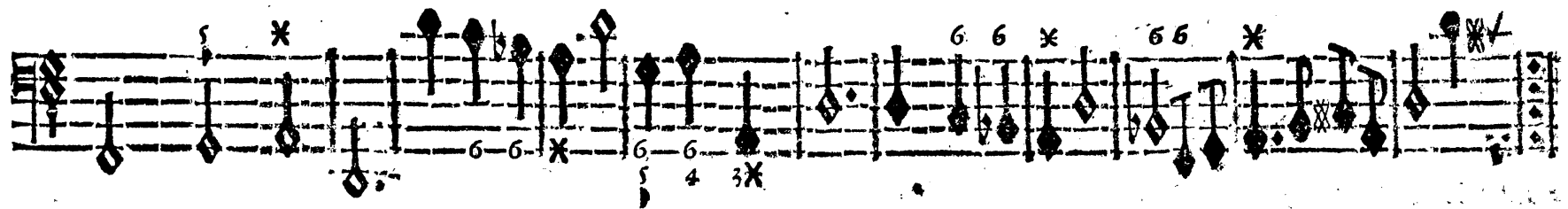
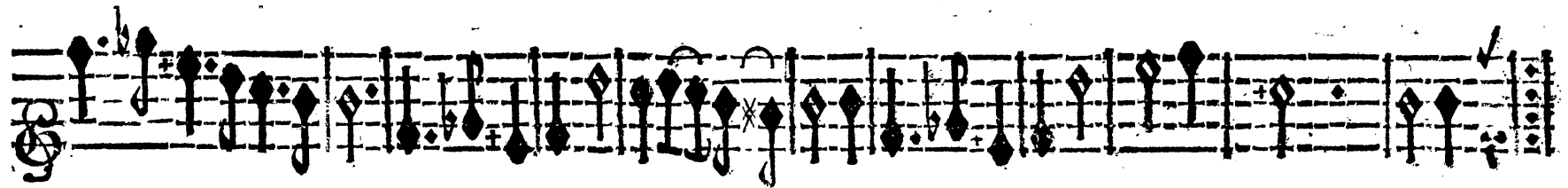
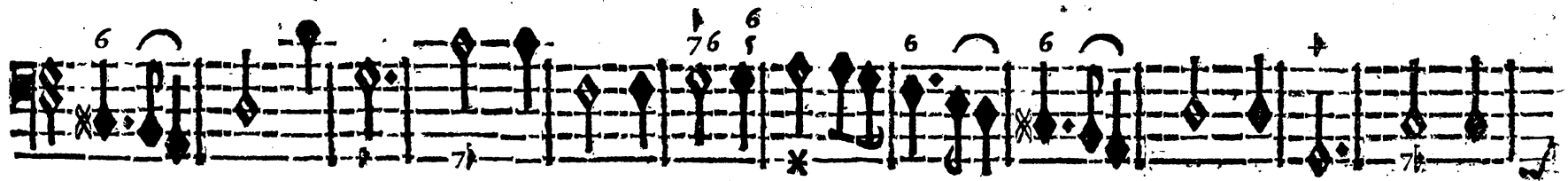
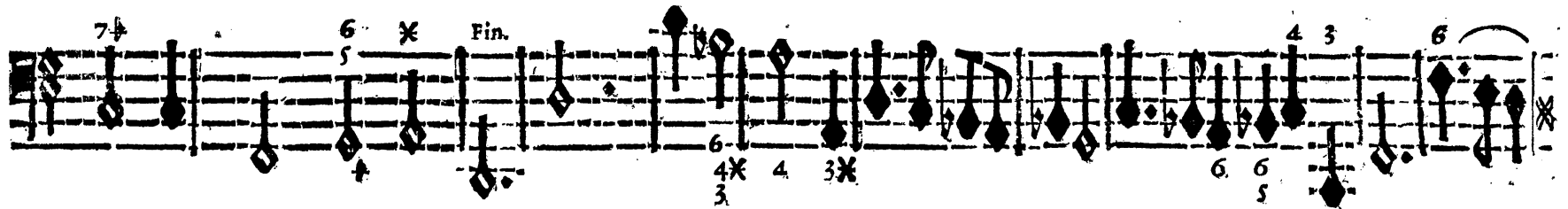
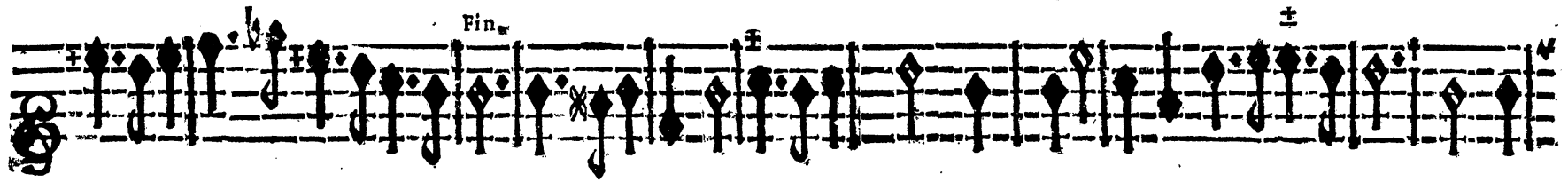


BASSE-CONTINUE.

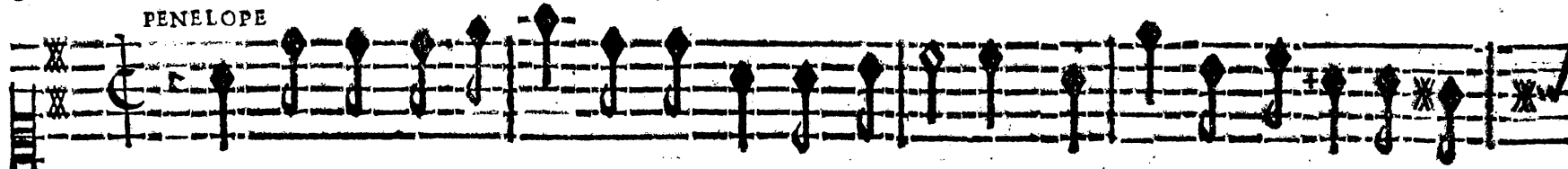


RONDEAU.

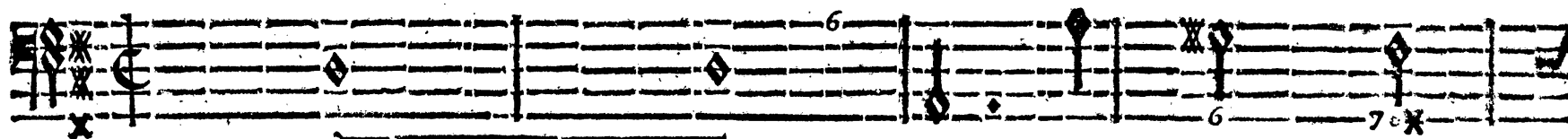




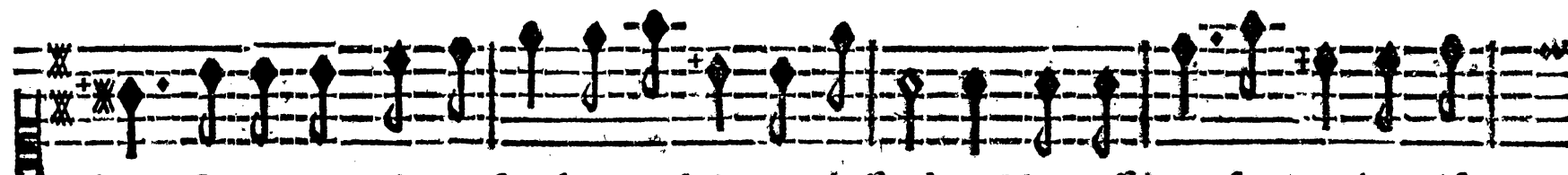
PENELOPE



Plaisirs trop dangereux, venez-vous me surprendre! Cessez de séduire mes



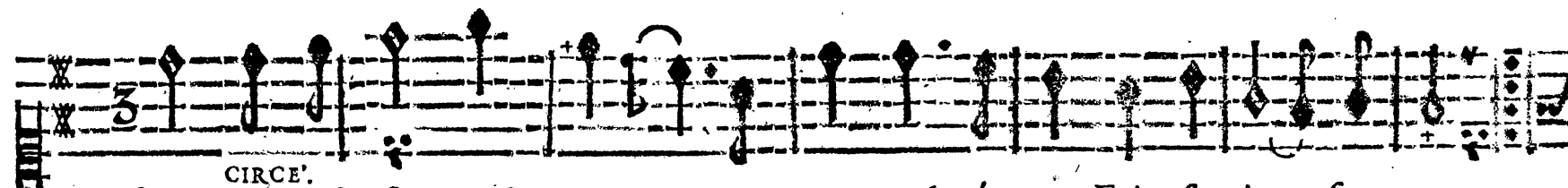
BASSE-CONTINUE.



sens, N'allumez point un feu dont je dois me défendre, Vos efforts seront impuis-



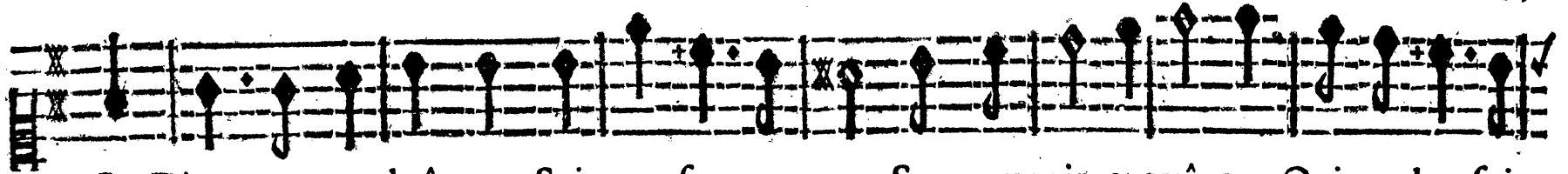
BASSE-CONTINUE.



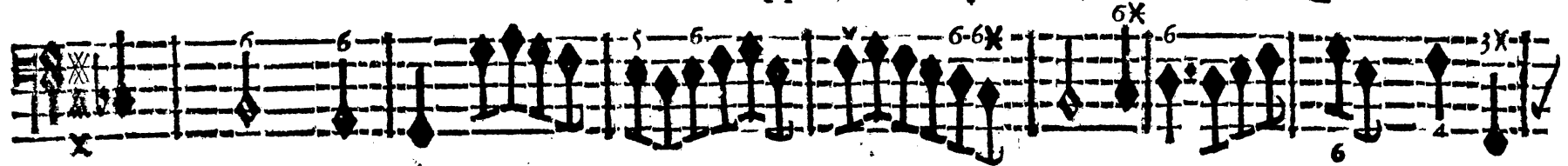
sants. La défense est vaine, L'Amour malgré nous Fait sentir ses coups:



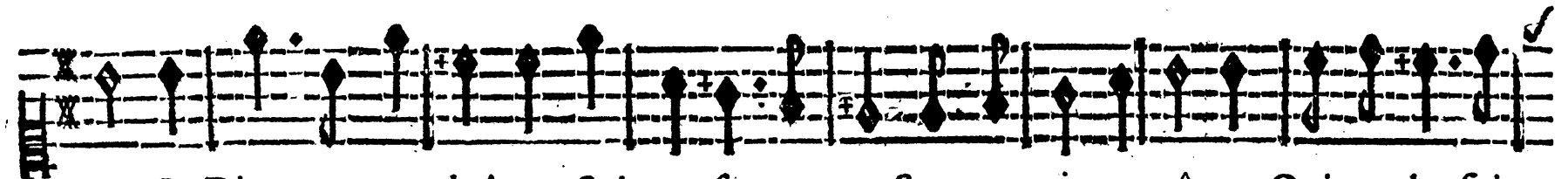
BASSE-CONTINUE.



Ce Dieu vous enchaîne, Suivez ses appas; Son pouvoir entraîne, Qui ne les fuit



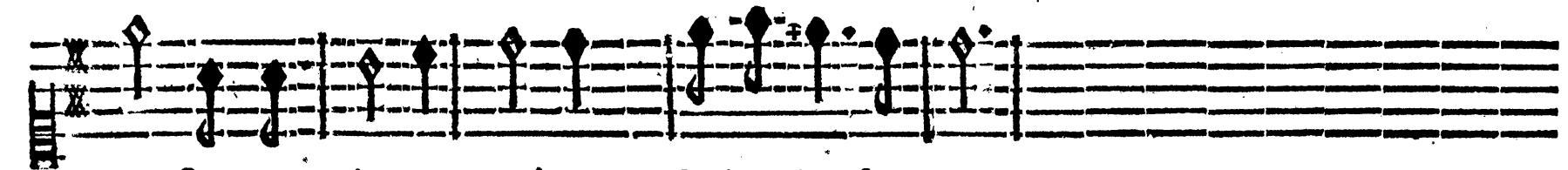
BASSE-CONTINUE.



pas. Ce Dieu vous enchaîne, Suivez ses appas; Son pouvoir entraîne, Qui ne les fuit



BASSE-CONTINUE.



pas. Son pouvoir entraîne, Qui ne les fuit pas.



BASSE-CONTINUE.

A musical staff in treble clef with a key signature of one sharp (F#) and a 3/4 time signature. The melody consists of a series of eighth and sixteenth notes, forming a rhythmic pattern characteristic of a chaconne.

CHACONNE.

A musical staff in bass clef with a key signature of one sharp (F#) and a 3/4 time signature. It features a bass line with various chords and intervals, including some triplets and sixteenth-note patterns.

BASSE-CONTINUE.

A musical staff in treble clef with a key signature of one sharp (F#) and a 3/4 time signature. The melody continues with a series of eighth and sixteenth notes, maintaining the rhythmic structure of the chaconne.

A musical staff in bass clef with a key signature of one sharp (F#) and a 3/4 time signature. It continues the bass line with chords and intervals, including some sixteenth-note patterns.

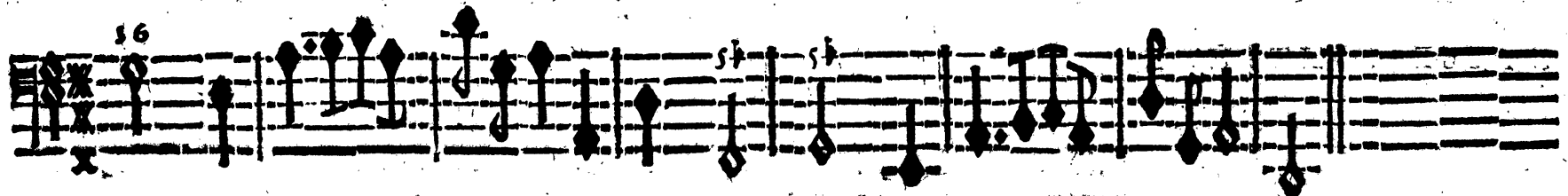
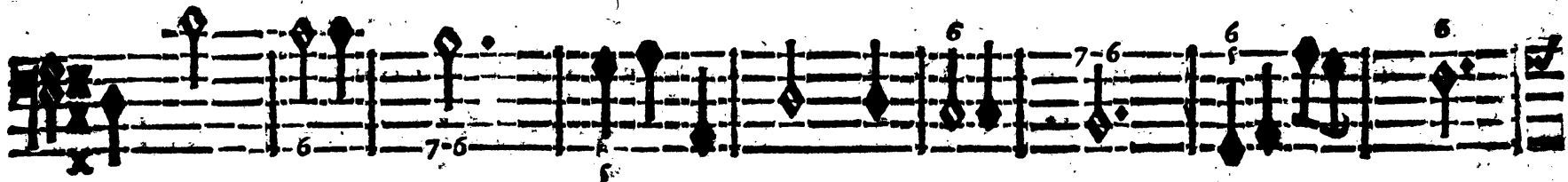
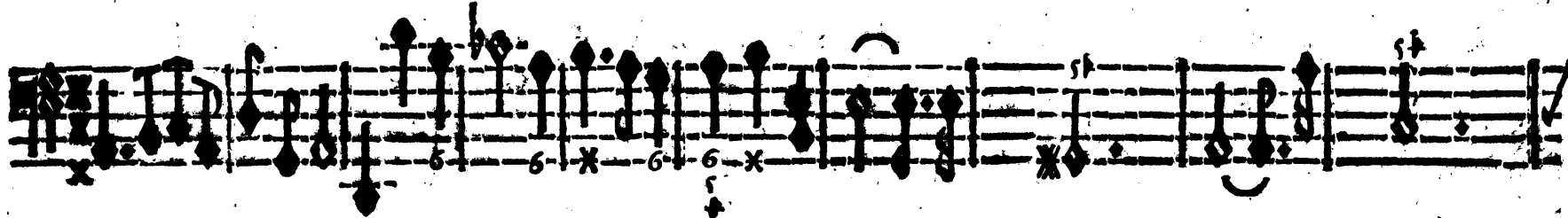
BASSE-CONTINUE.

A musical staff in treble clef with a key signature of one sharp (F#) and a 3/4 time signature. The melody continues with a series of eighth and sixteenth notes, maintaining the rhythmic structure of the chaconne.

A musical staff in bass clef with a key signature of one sharp (F#) and a 3/4 time signature. It continues the bass line with chords and intervals, including some sixteenth-note patterns.

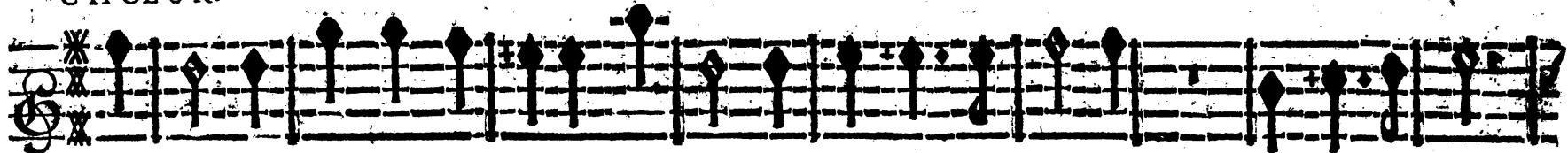
BASSE-CONTINUE.



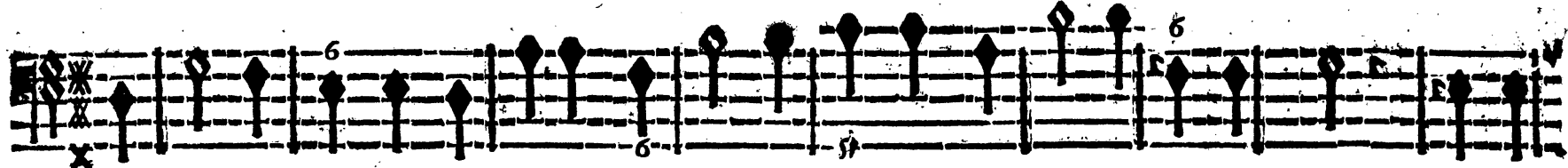


# ULYSSE, TRAGEDIE.

## CHOEUR.



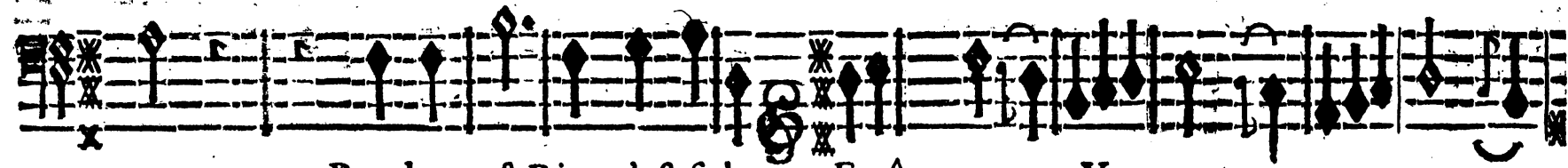
Cédez, Beauté trop severe, Tout rit, tout cherche à vo<sup>o</sup> plaire, Rien n'est si doux.



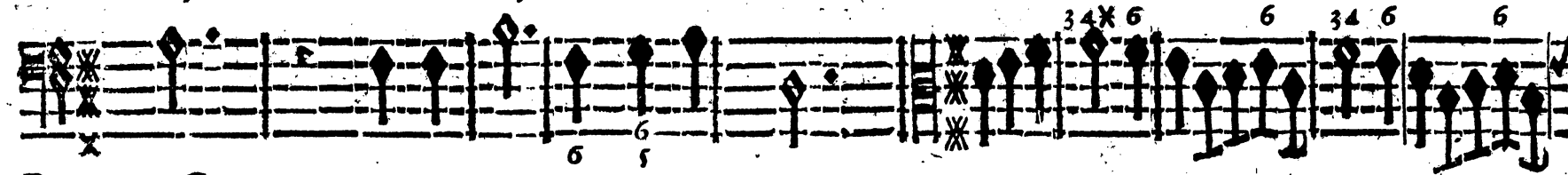
Cédez, Beauté trop severe, Tout rit, tout cherche à vo<sup>o</sup> plaire, Rendez- vous, Rendez-



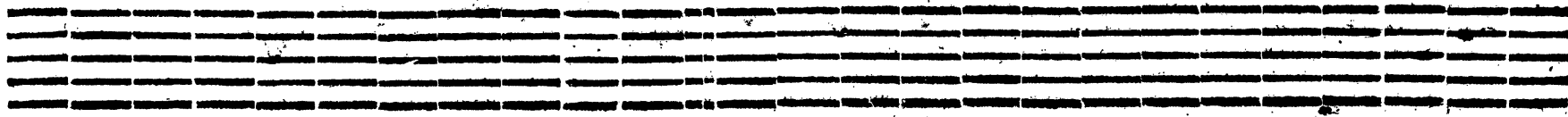
Rien n'est si doux. Rendez-vo<sup>o</sup>, Rien n'est si doux. FLÛTES ET VIOLONS.

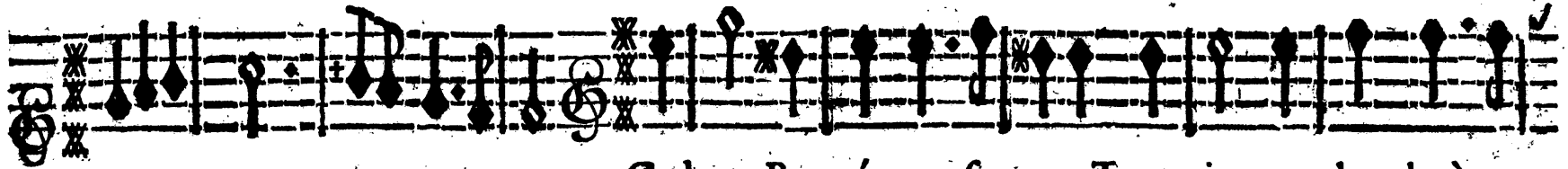


vous, Rendez-vo<sup>o</sup>, Rien n'est si doux. FLÛTES. ET VIOLONS.



## BASSE-CONTINUE.

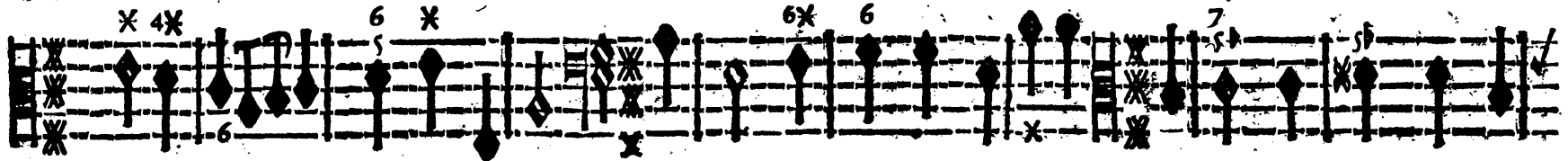




Cédez, Beauté trop severe, Tout rit, tout cherche à vous



Tout rit, tout cherche à vous



BASSE-CONTINUE.

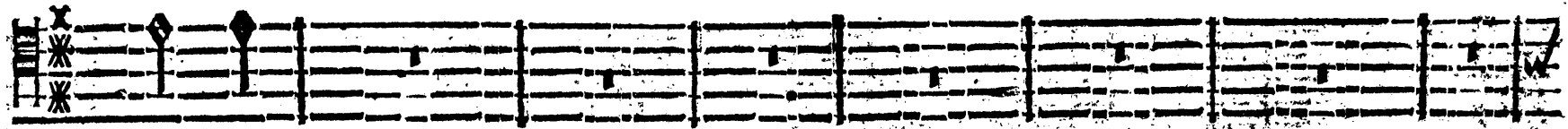
Cédez, Beauté trop severe, B. C.



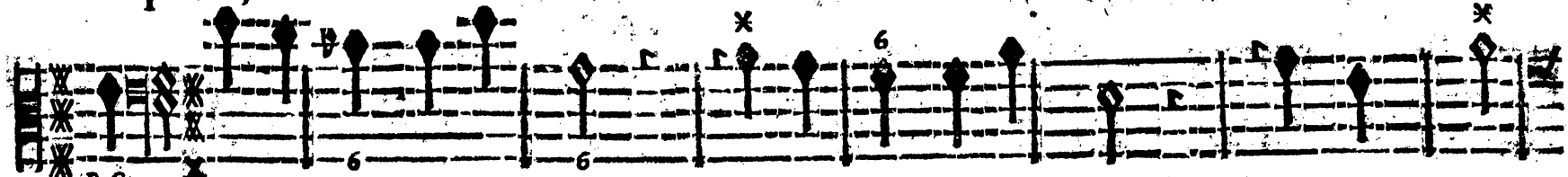
plaire,

Rien n'est si doux.

Rien n'est si doux. Rendez-vous,



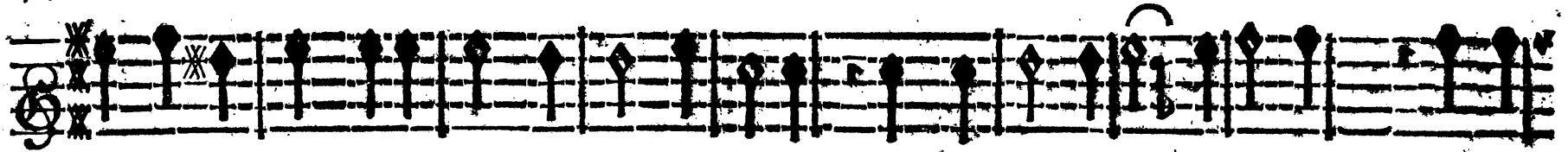
plaire,



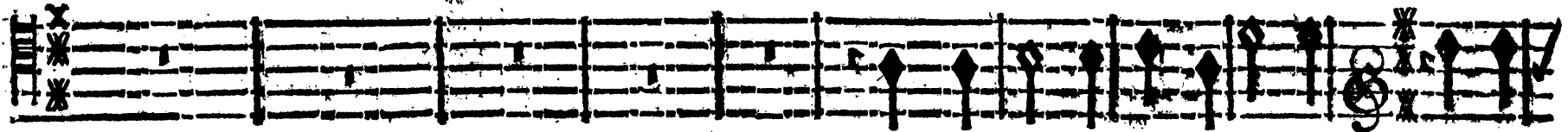
Rendez-vous, Rendez-vous,

Rendez-vous, Rendez-vous,

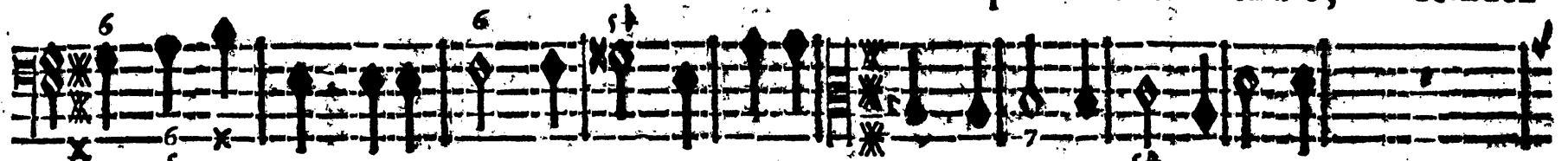
Rendez vous,



Rien n'est si doux. Il est temps, c'est trop attendre, L'Amour presse il faut se rendre, Rendez-



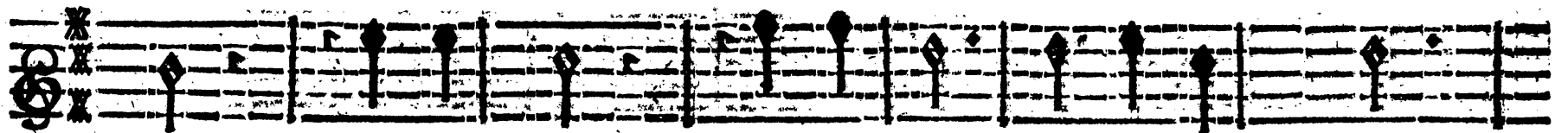
L'Amour presse il faut se rendre, Rendez-



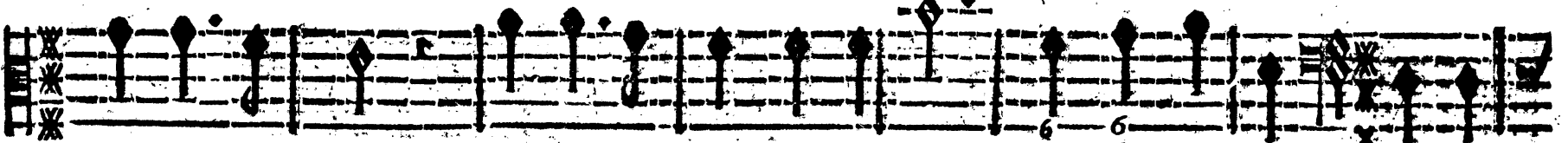
Rien n'est si doux. Il est temps, c'est trop attendre, BASSE-CONTINUE.



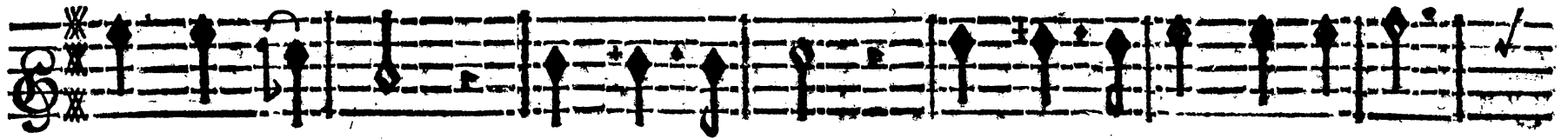
vous, Rendez- vous, Rendez- vous, Rien n'est si doux.



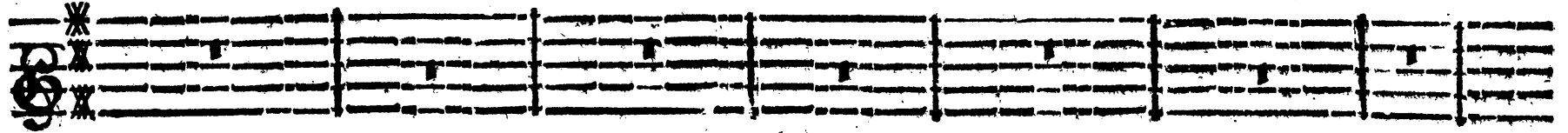
vous, Rendez- vous, Rendez- vous, Rien n'est si doux.



Rien n'est si doux. Rien n'est si doux. Rendez vous, Rien n'est si doux. Rendez-



Rien n'est si doux, Rien n'est si doux, Rien n'est si doux. Rendez-vous,



vous, Rendez-vous, Rendez-vous, Rendez-vous,



Rien n'est si doux. FLÛTES ET VIOLONS.

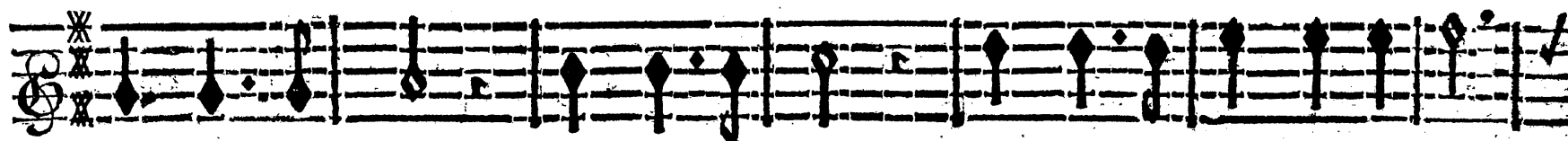


FLÛTES ET VIOLONS.



Rien n'est si doux.

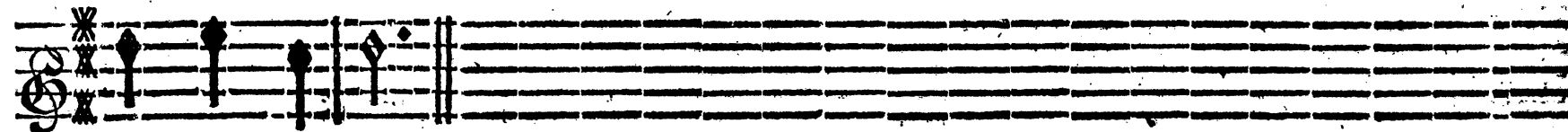
Rendez-



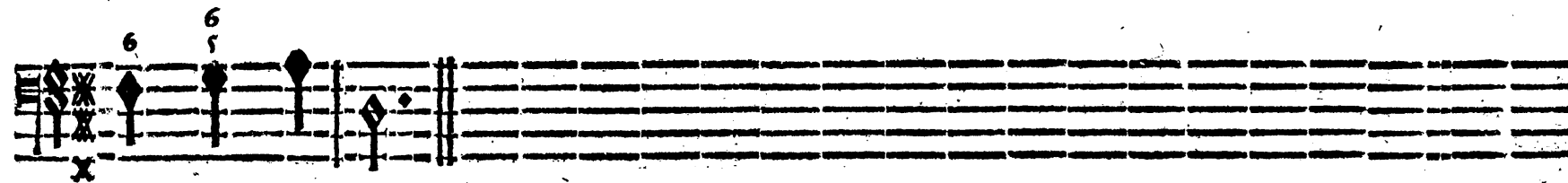
Rien n'est si doux, Rien n'est si doux, Rien n'est si doux. Rendez-vous,



vous, B.C. Rendez-vous, B.C. Rendez-vous, B.C. Rendez-vous,

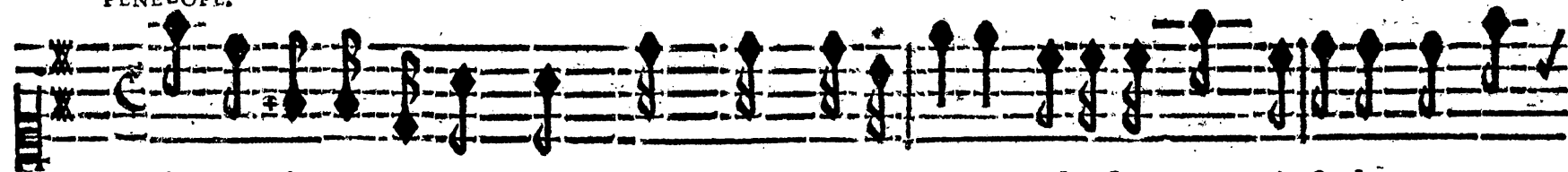


Rien n'est si doux.

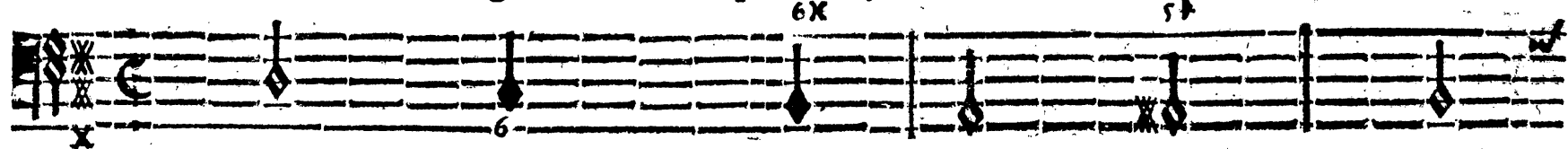


Rien n'est si doux.

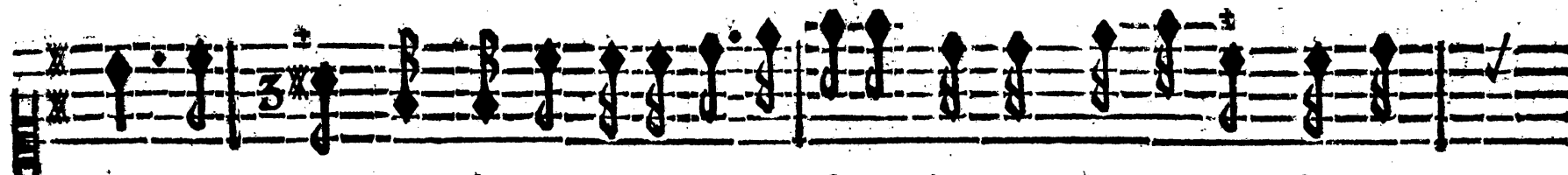
PENELOPE.



Ah! Circé me trahit, grands Dieux! quelle injustice? Abusez-vous ainsi de ma cre-



BASSE-CONTINUE.



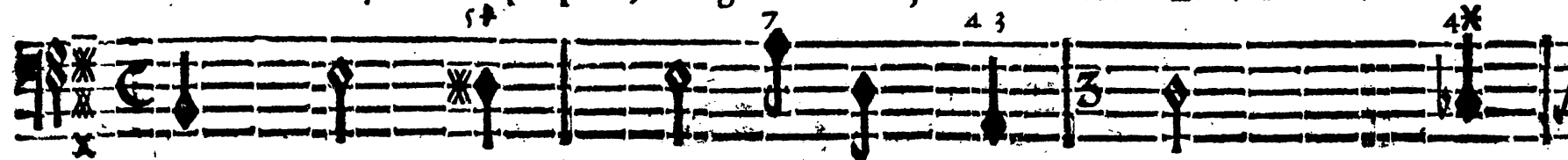
dule er- reur? Vous deviez rappeler Ulyffe, Et vous le chassez de mon



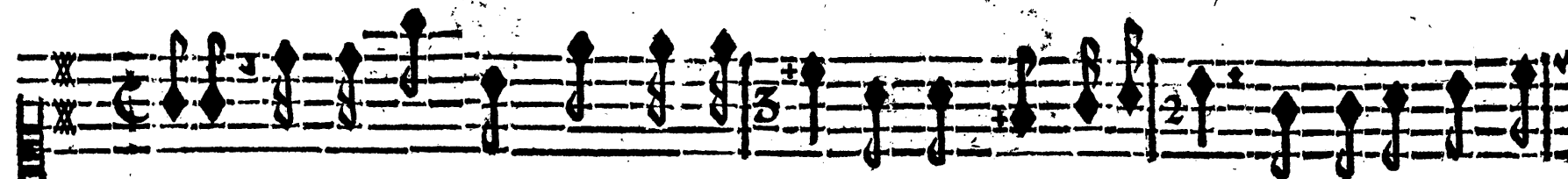
BASSE-CONTINUE.



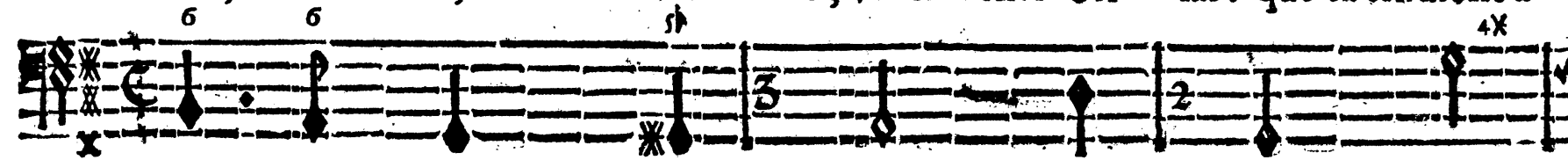
cœur; Ciel! foyez-moy propice, Eteignez une injuste ar- deur. En vain sa vertu se sou-



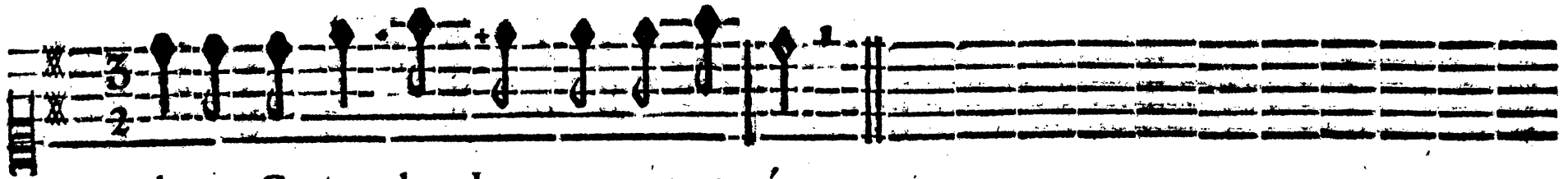
BASSE-CONTINUE.



leve, Hâtons-nous, son cœur est blef- sé, Va chercher Uri- las? que sa tendresse a-



BASSE-CONTINUE.



cheve, Ce que le charme a commencé.



BASSE-CONTINUE.

*On reprend pour Entr'Acte le Rondeau page 34.*

FIN DU PREMIER ACTE.

