

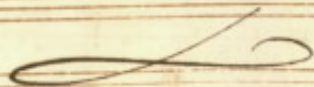


Quanto dolce è quell'ardore
Cantata a voce sola di soprano

Con Oboè solo

Del Sig.^o Francesco

Mancini



Oboe

largo

Arias

This is a page of handwritten musical notation. At the top left, the word "Oboe" is written above the first staff. Below it, the word "largo" is written above the second staff. To the left of the second staff, the word "Arias" is written, with a large bracket grouping the second, third, fourth, fifth, and sixth staves. The notation includes various musical symbols such as clefs (soprano, alto, and tenor), time signatures (mostly common time, 'C'), and complex rhythmic patterns including sixteenth and thirty-second notes. The paper shows signs of age, including yellowing and some foxing.

Handwritten musical score for the first system. It consists of a vocal line (treble clef) and a piano accompaniment (bass clef). The piano part features a complex, rhythmic pattern with many sixteenth and thirty-second notes. The vocal line begins with a few notes and then has a rest. The lyrics "Quanto dolce" are written in cursive above the vocal line.

Handwritten musical score for the second system. The piano accompaniment continues with its intricate rhythmic texture. The vocal line has several notes with lyrics written below it: "quell ardore che per te m'infiamma il core". The word "God" is written in a larger, bolder script at the end of the line.

Handwritten musical score for the third system. The piano accompaniment continues. The vocal line has lyrics: "mio caro mio ben God mio mio ca ro". The word "God" is again written in a larger, bolder script. The system ends with a double bar line and a fermata over the final note.



A musical staff with a treble clef, containing several measures of music with various note values and rests.

A musical staff with a bass clef. The lyrics "ben" and "quanto dolce e quell'ar" are written above the staff. The music consists of several measures with notes and rests.

A musical staff with a treble clef, containing several measures of music with various note values and rests.

A musical staff with a bass clef. The lyrics "dove che per se m'infiamma il core Idol mio caro mio" are written above the staff. The music consists of several measures with notes and rests.

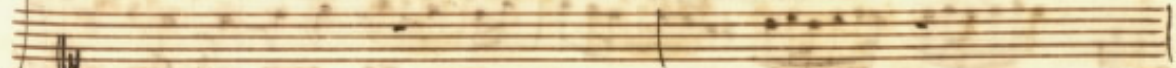
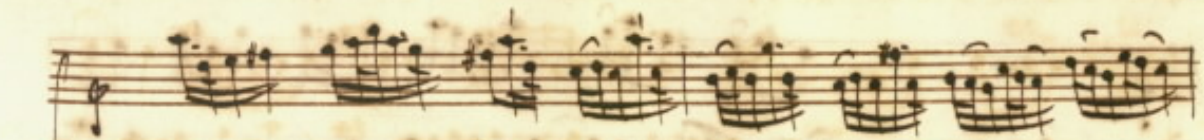
A musical staff with a treble clef, containing several measures of music with various note values and rests.

A musical staff with a bass clef. The lyrics "ben Idol mio ca" are written above the staff. The music consists of several measures with notes and rests.

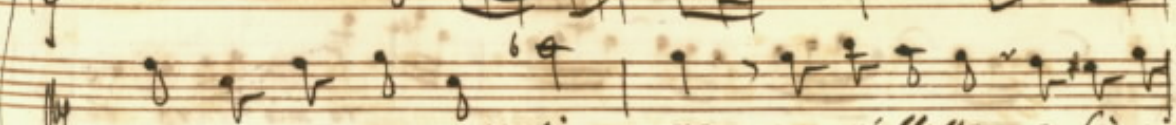
A set of five empty musical staves at the bottom of the page.

Handwritten musical score on aged paper, featuring a vocal line and a piano accompaniment. The score is written in a single system with two staves. The vocal line is in a soprano or alto clef, and the piano accompaniment is in a bass clef. The music is in a common time signature (C) and a key signature of one flat (B-flat). The lyrics are written below the vocal line.

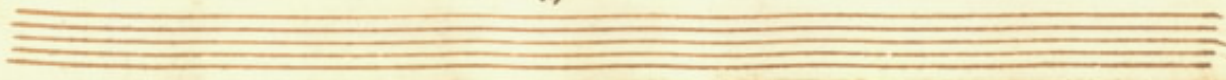
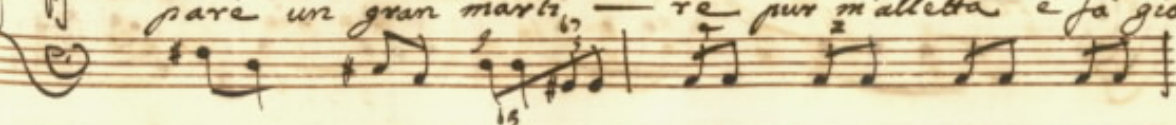
Lyrics: ro caro mio ben Godol
 mio caro caro mio ca
 ro mio caro ben



benche



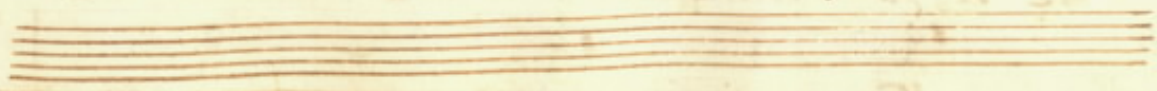
pare un gran martir, — re pur m'alletta e fa gio —



ire tanto aman te tanto a

riante ho il core in sen per m'al

letta e fa gioire tanto aman



te tanto aman

Da Capo

te ho il core in ser

Da Capo

Andante

Pur che a te sia vicina ogni pena per

me si fa contento, or ch'io t'abbraccio o'

cavo altro più non desio altro non uoglio

mio Fileno adorato o qual gran gioia is

sento in dirti amato bene

Bringi se piu le puoi le mie care

ne

Segue Maria

This image shows a page of handwritten musical notation on aged, yellowed paper. The score is organized into three systems, each consisting of three staves. The top staff of each system is a treble clef staff, and the bottom two are bass clef staves. The notation includes various note values, rests, and dynamic markings such as *All.* and *Allo.*. The paper shows signs of age, including foxing and staining. At the bottom of the page, there are three empty staves.

Aprimi il petto mio bel diletto ch'io uo' mostrarti quel tuo bel

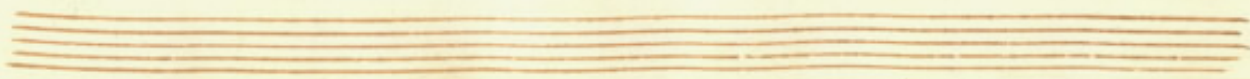
uolto dipinto in me dipinto in me

mio bel diletto aprimi il petto ch'io uo' mo-

Ararti quel tuo bel volto dipinto in me

dipinto in me quel tuo bel volto

io uò mostrarti dipinto in me dipinto in me



Handwritten musical notation for the first system, consisting of two staves. The upper staff is in treble clef and the lower staff is in bass clef. The music includes various note values, rests, and dynamic markings.

Handwritten musical notation for the second system, consisting of two staves. The lower staff contains the lyrics "No che ou almero" written in cursive. The music continues with notes and rests.

Handwritten musical notation for the third system, consisting of two staves. The lower staff contains the lyrics "mi guardi in seno per esser certo de la mia fe" written in cursive. The music concludes with notes and rests.



De la mia fe

ui che tu alma - no mi guardi in seno per aver

certo de la mia fe

The image shows a page of handwritten musical notation on aged, yellowed paper. It consists of three systems of staves. Each system has a vocal line (treble clef) and a piano accompaniment line (bass clef). The lyrics are written in Italian. The first system contains the lyrics 'De la mia fe'. The second system contains 'ui che tu alma - no mi guardi in seno per aver'. The third system contains 'certo de la mia fe'. The paper shows signs of age, including foxing and staining. At the bottom of the page, there are five empty musical staves.

Handwritten musical score for the first system. It consists of three staves. The top staff is a vocal line with a treble clef and a common time signature. The middle staff is a piano accompaniment with a bass clef. The bottom staff is a piano accompaniment with a bass clef. The lyrics are written below the vocal line.

no de tu almeno mi guardi in sero per esser

Handwritten musical score for the second system. It consists of three staves. The top staff is a vocal line with a treble clef and a common time signature. The middle staff is a piano accompaniment with a bass clef. The bottom staff is a piano accompaniment with a bass clef. The lyrics are written below the vocal line.

certo certo certo de la mia fe per esser

Handwritten musical score for the third system. It consists of three staves. The top staff is a vocal line with a treble clef and a common time signature. The middle staff is a piano accompaniment with a bass clef. The bottom staff is a piano accompaniment with a bass clef. The lyrics are written below the vocal line.

cer - to per esser cer - to cer - to de

Handwritten musical score for the first system. It consists of three staves: a vocal line at the top and two piano accompaniment staves below. The key signature has one sharp (F#) and the time signature is common time (C). The lyrics are "la mia fe de la mia fe". There are some markings below the piano staves, possibly indicating fingerings or ornaments.

Handwritten musical score for the second system. It consists of three staves: a vocal line and two piano accompaniment staves. The system begins with a repeat sign (two dots) and ends with a double bar line and a repeat sign. The instruction "Da Capo" is written above the piano staves. The lyrics are "De la mia fe Da Capo".

Fine