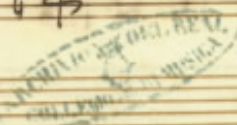


# La Rosa

Oct. 18  
Mancini

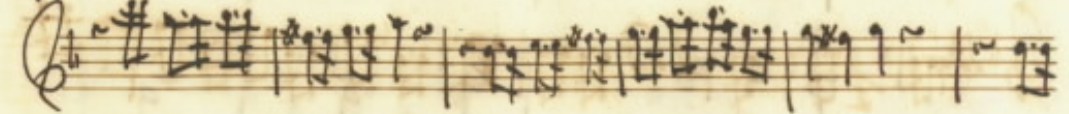
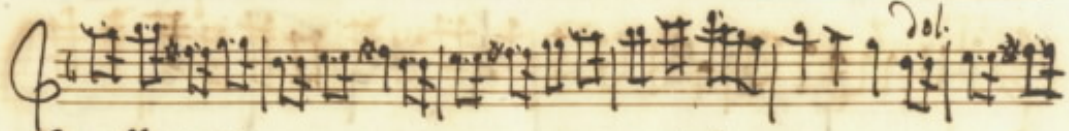
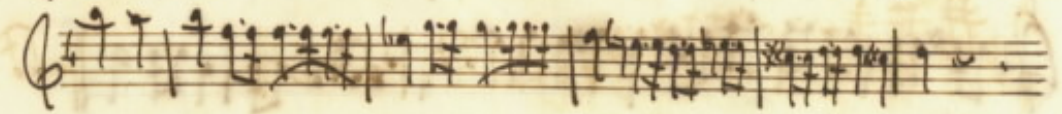
*Allegro*



2.<sup>a</sup> Pa

The first system of handwritten musical notation consists of three staves. The top staff uses a treble clef and contains a melodic line with various note values and rests. The middle staff uses a bass clef and contains a bass line with similar note values and rests. The bottom staff is a single-line staff with a bass clef, containing a line of notes. The notation is dense and characteristic of 18th-century manuscript style.

The second system of handwritten musical notation also consists of three staves. The top staff uses a treble clef and contains a melodic line. The middle staff uses a bass clef and contains a bass line. The bottom staff is a single-line staff with a bass clef, containing a line of notes. The notation is dense and characteristic of 18th-century manuscript style.





Handwritten musical score for three staves. The top staff is in treble clef with a key signature of one sharp (F#) and a common time signature. The middle staff is also in treble clef with a key signature of one sharp. The bottom staff is in bass clef with a key signature of one sharp. The music consists of rhythmic patterns and melodic lines.

*Rec. con VV.*

Handwritten musical notation on a single staff, showing rhythmic patterns and notes.

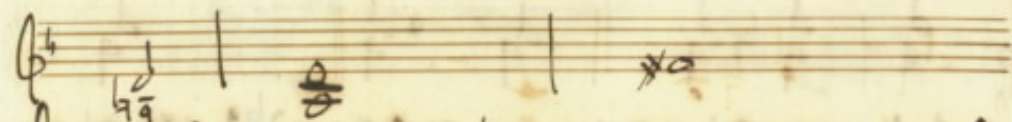
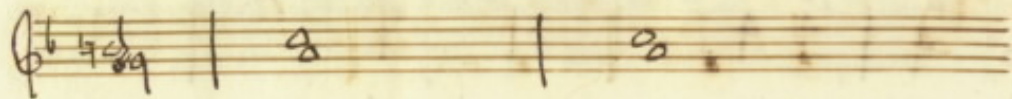
Handwritten musical notation on a single staff, showing rhythmic patterns and notes.

Handwritten musical notation on a single staff, showing rhythmic patterns and notes.

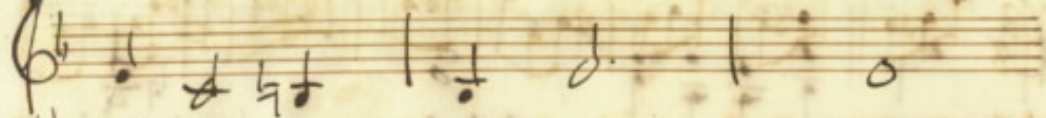
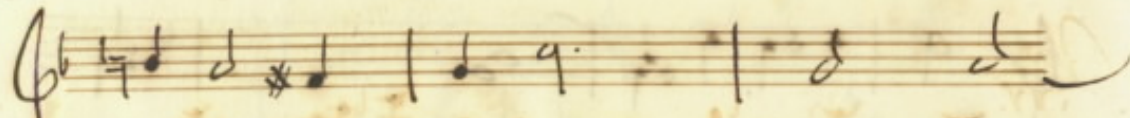
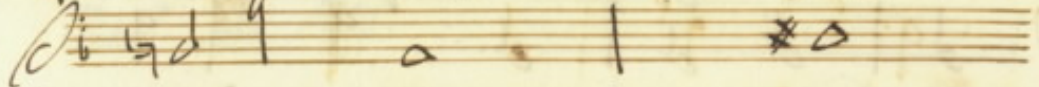
*Il bianco più della più bella Diana può scura / pino a =*

*Scosa a col bel lague onde rimase asperja la terra color:*

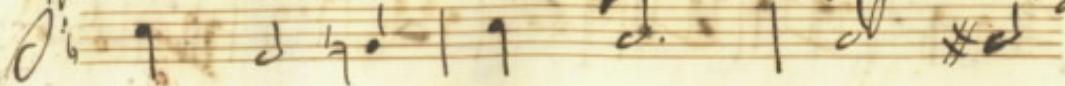
*Bri la prima loja mi nacque si bel fior con dura legge che sia*



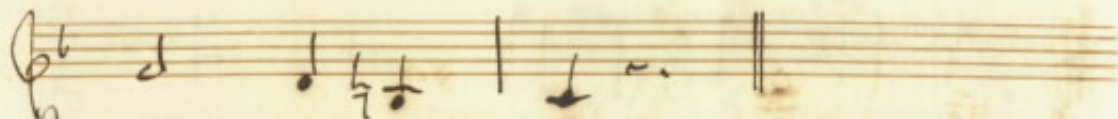
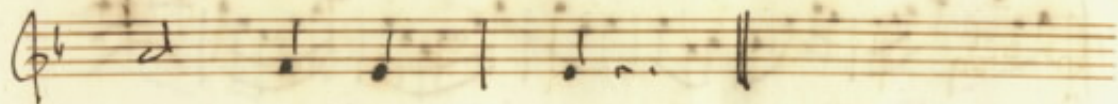
Cinto di spine e con la dura sorte ch'il sol che a lei da

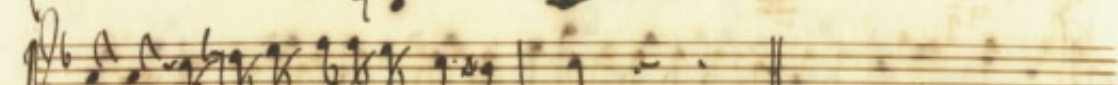


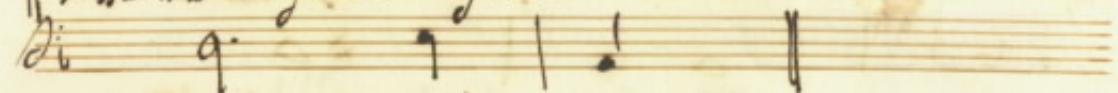
Suita a lei dia morte onde a fama di undi sui primi alton così par:



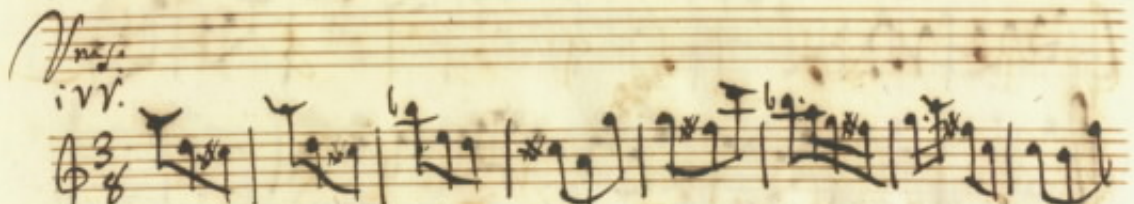

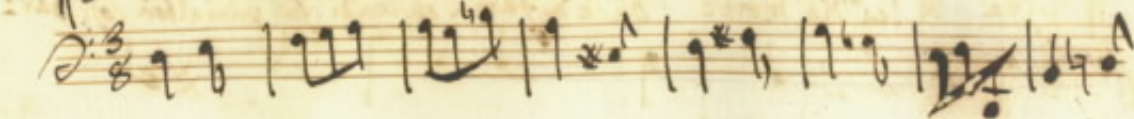





  
 Classe il Rea! fiore ai Fiori



*Vna.*  
*irr.*

This image shows a page of handwritten musical notation on aged, yellowed paper. The score is arranged in several systems of staves. The top system consists of two staves: the upper staff has a treble clef and contains a melodic line with various notes, rests, and accidentals (flats and naturals); the lower staff has a bass clef and contains a bass line. The second system also has two staves, with the upper staff in treble clef and the lower staff in bass clef. The third system features two staves, with the upper staff in treble clef and the lower staff in bass clef. The fourth system consists of two staves, with the upper staff in treble clef and the lower staff in bass clef. The fifth system has two staves, with the upper staff in treble clef and the lower staff in bass clef. The sixth system consists of two staves, with the upper staff in treble clef and the lower staff in bass clef. The seventh system has two staves, with the upper staff in treble clef and the lower staff in bass clef. The eighth system consists of two staves, with the upper staff in treble clef and the lower staff in bass clef. The notation includes various note values, rests, and accidentals. There are some handwritten annotations in the lower systems, including the word "Conzola" with a fermata-like symbol above it, and the word "tem" below it. The paper shows signs of age, including foxing and staining.



Handwritten musical score for the first system, consisting of three staves: treble, alto, and bass. The notation includes various note values, rests, and accidentals. The word "Consola" is written in the alto staff, with an equals sign below it, and "tutti" is written to the right.

Handwritten musical score for the second system, consisting of three staves: treble, alto, and bass. The notation includes various note values, rests, and accidentals. The word "dol." is written above the treble staff. The lyrics "Caelica et flori amanti il destino il del" are written in the alto staff, with an equals sign below the word "del".

Handwritten musical score for the first system. It consists of three staves. The top staff is in treble clef with a common time signature. The middle staff is in alto clef with a common time signature and contains the lyrics "tino uost cosi" and "conyo =". The bottom staff is in bass clef with a common time signature. The music is written in a historical style with various note values and rests.

Handwritten musical score for the second system. It consists of three staves. The top staff is in treble clef with a common time signature. The middle staff is in alto clef with a common time signature and contains the lyrics "ha = =", "tami", "calica", and "ti fiori a:". The bottom staff is in bass clef with a common time signature. The music is written in a historical style with various note values and rests.

Handwritten musical score for the first system. It consists of a vocal line on a single staff and a piano accompaniment on a grand staff (treble and bass clefs). The lyrics are written below the vocal line.

Ma ti il destino il destino vuol così (con) =

Handwritten musical score for the second system, continuing the vocal and piano parts from the first system. The lyrics are written below the vocal line.

ti il de =



Handwritten musical score for the first system. It consists of three staves. The top staff is a vocal line in treble clef. The middle staff is a piano accompaniment in treble clef with the lyrics: *tino il destino vuol così il destino vuol così*. The bottom staff is a bass line in bass clef. The music is written in a historical style with various ornaments and clef changes.

Handwritten musical score for the second system. It consists of three staves. The top staff is a vocal line in treble clef. The middle staff is a piano accompaniment in treble clef. The bottom staff is a bass line in bass clef. The music continues from the first system. The word *Ancor* is written at the end of the piano accompaniment staff.

Handwritten musical score for the first system. It consists of a vocal line on a single staff and a basso continuo line on a two-staff system. The vocal line begins with a treble clef and contains several measures of music, including a double bar line and a key signature change to one sharp (F#). The basso continuo line starts with a bass clef and contains several measures of figured bass notation. The lyrics "Dio che d'Aprile son il deli = o nasco e moro in" are written below the vocal line.

Handwritten musical score for the second system. It consists of a vocal line on a single staff and a basso continuo line on a two-staff system. The vocal line begins with a treble clef and contains several measures of music, including a double bar line and a key signature change to one sharp (F#). The basso continuo line starts with a bass clef and contains several measures of figured bass notation. The lyrics "Un sol di nasco e mo ro in un sol di" are written below the vocal line.

Moro nasco nasco e moro in un sol di

R.<sup>o</sup>

Voi l'alta guardate La Dea che Cipro adora e la più belle

Vose togliendo al fuol la pose nel vostro volto amata Covi ond'



io amo in voi benchè a vuoto in fragil velo Le ball.

Sopra del Cielo Aria

Viol. solo

Violonci. All.<sup>o</sup>

This image shows a page of handwritten musical notation on aged, yellowed paper. The score is organized into five systems, each consisting of two staves. The notation is dense and includes various musical symbols such as notes, rests, beams, and slurs. The paper shows signs of age, including foxing and water stains, particularly on the right side. The handwriting is in dark ink, and the overall appearance is that of an early manuscript or a composer's draft.



Amo in voi ma quelle Rose

Chela uaga Dea compose per onor d'alta bel:



Amo in voi mia quella

Trorse di la uaga Dea compose per onor d'alta gloria

This is a page of handwritten musical notation on aged, yellowed paper. The score consists of several staves. The top staff is a treble clef with a key signature of one sharp (F#) and a common time signature (C). It contains a melodic line with various note values and rests. The second staff is a bass clef with a key signature of one flat (Bb) and a common time signature (C). It contains a bass line with notes and rests. The lyrics "Amo in voi mia quella" are written in a cursive hand across the second and third staves. The bottom section of the page features a grand staff with a treble clef on the left and a bass clef on the right, both with a key signature of one flat (Bb) and a common time signature (C). The lyrics "Trorse di la uaga Dea compose per onor d'alta gloria" are written across these staves. The notation includes various note values, rests, and some decorative flourishes. The paper shows signs of age, including foxing and staining.

Handwritten musical score consisting of six systems of staves. The notation includes treble and bass clefs, various note values, rests, and dynamic markings. The lyrics are written in a cursive hand below the vocal staves.

per onor d'alta beltà

A mo in uoi mà quella rose che ha uaga



Dea compone per onor d'alta baltà per onor  
per onor d'alta baltà Per o=

*Handwritten musical score on aged paper, featuring ten staves of music. The notation includes treble and bass clefs, various note values, rests, and accidentals. The lyrics are written in a cursive hand below the staves. The paper shows signs of age, including foxing and staining.*



Handwritten musical score on aged paper, featuring seven staves. The notation includes treble clefs, various note values, rests, and dynamic markings. The lyrics "nor = = per chor d'alta d'alta" are written across the second and third staves. The paper shows signs of age, including foxing and staining.

nor = = per chor d'alta d'alta

A handwritten musical score on aged, yellowed paper. The score consists of ten staves. The first staff is a treble clef with a key signature of one sharp (F#) and a common time signature (C). The second staff is a bass clef with a key signature of one sharp (F#) and a common time signature (C). The lyrics are written in Italian. The first line of lyrics is "Pur la rosa i preggi". The second line of lyrics is "Suoi perde in uoi che ricue in tal bellezza la ua-". The music is written in a cursive, handwritten style. There are some stains and foxing on the paper, particularly in the center and right side.

Pur la rosa i preggi

Suoi perde in uoi che ricue in tal bellezza la ua-



Ugheria e non la dà la uaghezza - za che ri=

Prencipal bellezza la uaghezza e non la dà



A handwritten musical score on aged, yellowed paper. The score is written in brown ink and consists of two systems of music. Each system has a vocal line with lyrics and a piano accompaniment. The first system's lyrics are "in tal bellezza la uaghoz = 2a e non". The second system's lyrics are "e non la dà e non la dà". The piano part includes various musical notations such as treble and bass clefs, a key signature of one sharp (F#), and a 9/8 time signature. There are several measures of rests, some marked with a fermata. The piano part features a variety of note values, including eighth and sixteenth notes, and some complex passages with beamed notes. The paper shows signs of age, including foxing and some staining.

in tal bellezza la uaghoz = 2a e non

e non la dà e non la dà

Li.

Parche prodasse il suol la spina ardita in pena le sue rosa hanno le

spina e son caduche e fali perche fu grato e di bel laqua tinge

La prima rosa ottenne per merceda che nel volto di

Clori la rosa ha nelle starni i noi colori

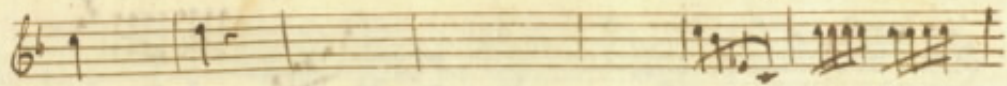
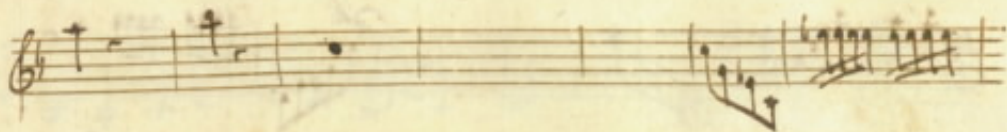
Aria  
16 VV-

Handwritten musical notation on two staves. The first staff is in treble clef with a 2/4 time signature and contains dense chordal textures. The second staff is in bass clef with a 2/4 time signature and contains a melodic line with some grace notes.

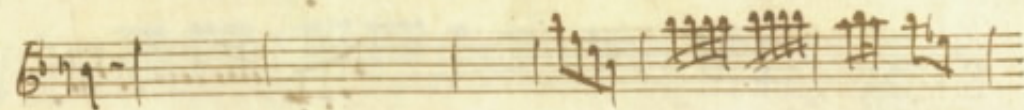
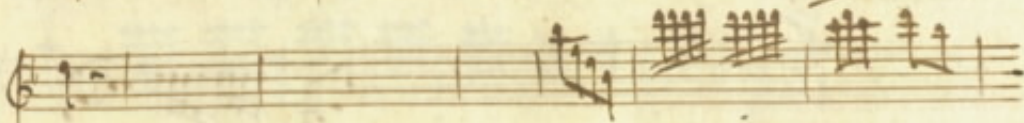
Handwritten musical notation on four staves. The first staff is in bass clef with a 2/4 time signature and contains a melodic line. The following three staves are in treble clef and contain dense chordal textures.

Handwritten musical notation on a single staff in bass clef. It features a melodic line with various time signatures (6/8, 3/4, 6/8, 3/4) and includes the handwritten text "Rose uermigle" written above the notes.

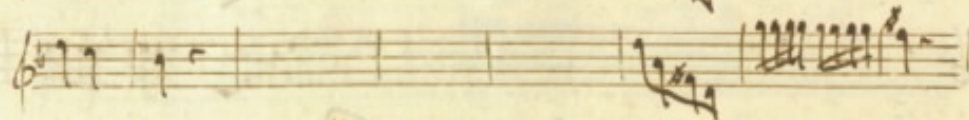




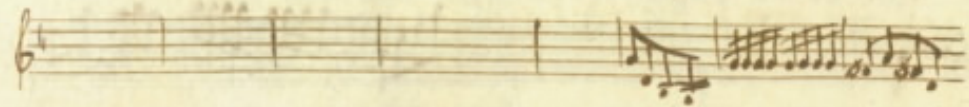
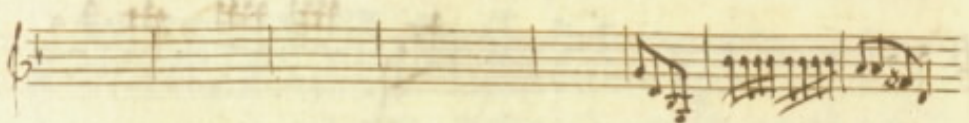
*Non di fiori non temete ardore a gelo non*



*non non temete ardore a gelo*



Rose uarmighe Rose d. Cori nò nò



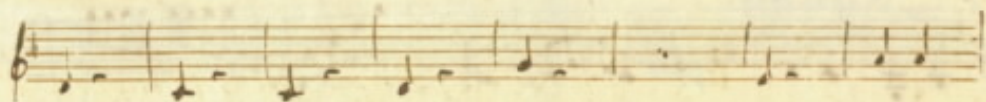
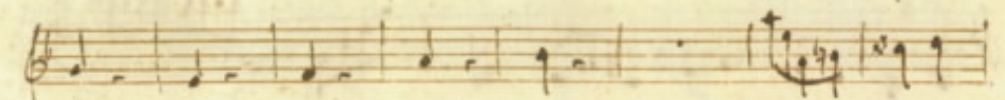
nò nò teme = ta ardore e galo nò nò

no no tema - te ardore a gelo

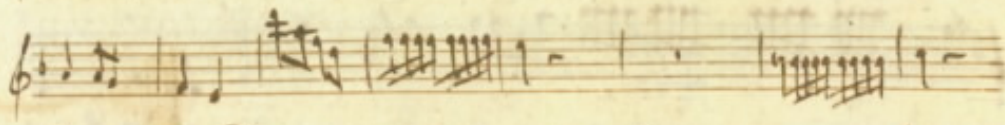
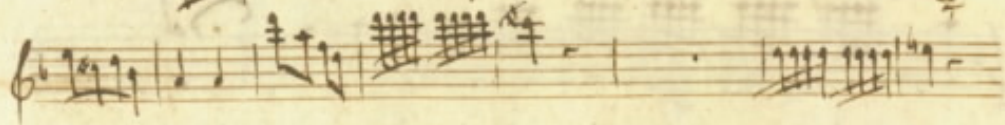
Sol.

Di nobil





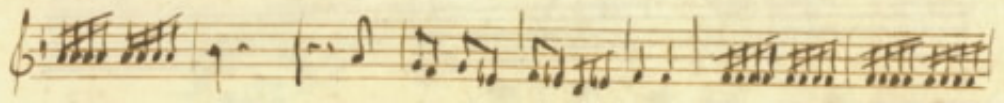
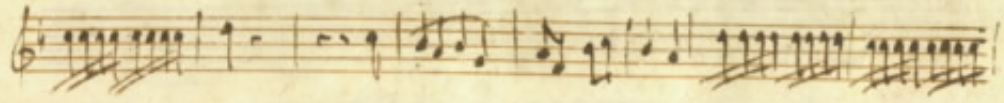
Largue uoi beta faga ne cade o largue chi tanti onori uan =



ta dal fielo

ne cade o largue chi tanti o =





novi uan = = = ta dal cielo Chi tanti o =

*Dacpo*

novi uan ta dal cielo

*fina*