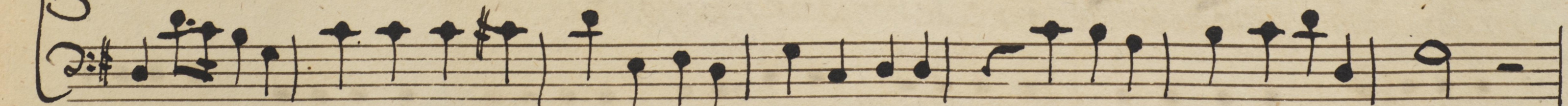
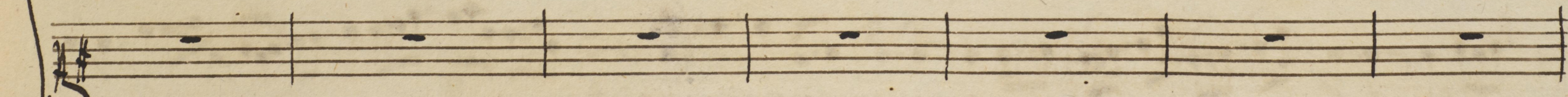
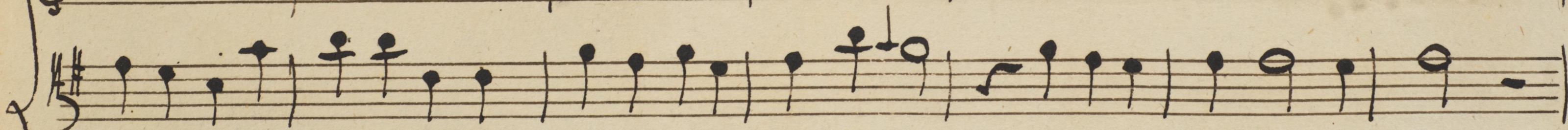
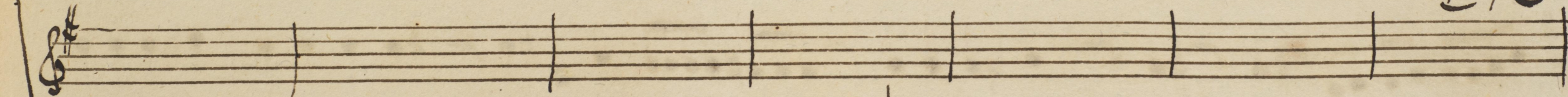
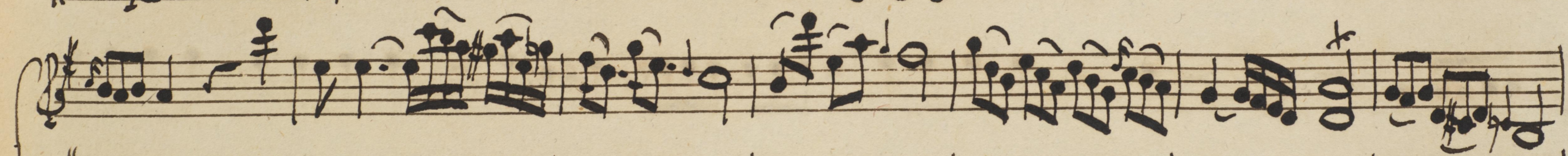
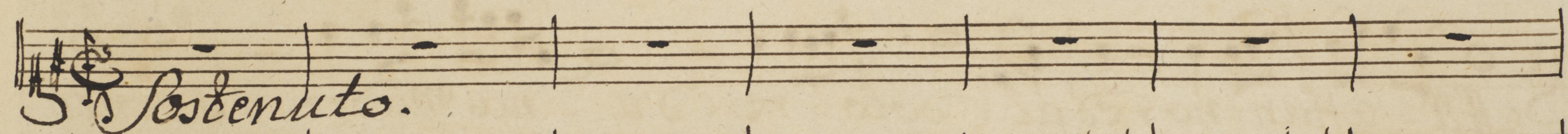
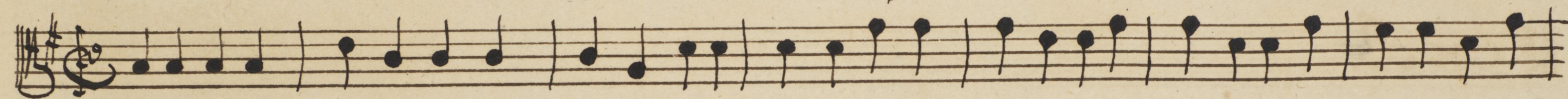
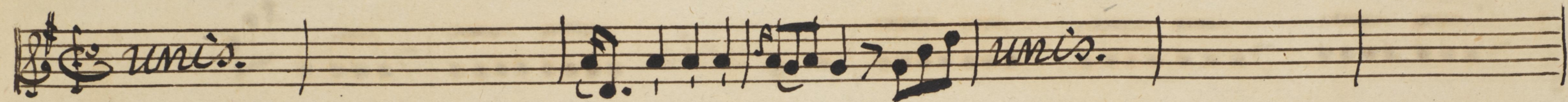


Aria.

227.

Del Sigl^{ro} Gaet. Lattilla.



pia.

unis.

col B.

All- affan- no, ed al do- lo- re d'u- na Ma- dre sven- tu-

ra- ta, di ma- cigno ai ben il co- re, se non piangi per pieta'

poco for. *pid.*

per pietà, all'affanno, ed al dolore di me cigno ai ben il co-re, se non

for. *for. assai* *fortiss.* *unis.* *fortiss.*

pian = - - - *gi per pietà, non piangi per - pietà.* *for.* *fortiss.*

pia.

unis.

col B.

All' - affan-no, ed al do-lo = re

pia.

unis.

D'u = na Ma-dre sven-tura = to di ma-cigno ai ben il core, se non

Handwritten musical score for the first system. It consists of a vocal line (treble clef) and a piano accompaniment (bass clef). The key signature has two sharps (F# and C#). The vocal line begins with a series of quarter notes, followed by a phrase marked *for.* The piano accompaniment features a complex texture with many beamed sixteenth notes. The system concludes with a *for.* marking.

Handwritten musical score for the second system. It continues the vocal line and piano accompaniment. The vocal line has a *pia.* marking. The piano accompaniment continues with dense sixteenth-note patterns. The system concludes with the lyrics: *per pietatē, all'affanno, ed al dolore di macigno ai ben il co-re, se non*. The system ends with a *for.* marking.

Handwritten musical score for voice and piano. The score is written on ten staves, with the first four staves grouped by a brace on the left. The music is in G major (one sharp) and 3/4 time. The lyrics are in Italian and appear to be a religious or dramatic piece. The score includes various dynamic markings such as *for.*, *for. assai*, *unio.*, *pian =*, *fortiss.*, and *per-pietà.*

Lyrics:
pian = *gi, se non piangi per pietà, non piangi.*
per-pietà.

For. assai

col B.

Con chi parlo? Dove sono? Dove sono...

for.

Allegro.

pia.

col B.

Ah! di' a un barbaro ragiono, ad un mostro d'empietè, ad un mostro

pia.

Handwritten musical score for the first system. It consists of a vocal line (treble clef) and a piano accompaniment (bass clef). The key signature has two sharps (F# and C#). The vocal line begins with a series of eighth notes, followed by a half note. The piano accompaniment consists of a steady eighth-note pattern. The lyrics for the vocal line are: *d'empietatē, cum barbaro ratiō=no, ad un mostro d'empietatē,*

Handwritten musical score for the second system. It consists of a vocal line (treble clef) and a piano accompaniment (bass clef). The key signature has two sharps. The vocal line continues with eighth notes and a half note. The piano accompaniment continues with eighth notes. The lyrics for the vocal line are: *unis.* *for. assai*

Handwritten musical score for the third system. It consists of a vocal line (treble clef) and a piano accompaniment (bass clef). The key signature has two sharps. The vocal line concludes with a half note and a fermata. The piano accompaniment concludes with a half note and a fermata. The lyrics for the vocal line are: *ad un mostro d'empietatē, ad un barbaro d'empietatē. D.C.* *for.*