

Spagna

Duello

Del Signor

Nicolo' Conforte

A tempo giusto

Uny

si ti cre-do

A 15 (5)

a ma to bene son tran-quillas e in quella fron-de



Handwritten musical notation on two staves, featuring various note values and rests.

veggo y prego il tuo bel cor

Se mi credi

Handwritten musical notation on two staves, including a section with a treble clef and a key signature change.

amato bene d'ogni rischio io va-do a fronte

Handwritten musical notation on two staves, including a section with a bass clef and a key signature change.

no lasciarmi no lasciarmi o

ne tre-mar-mi sento il cor

- mio favore

tutta imperno tutta in pegno hai - la mia fe

ah. souuengati ch'io moro ch'io moro ve il de =
ah. souuengati ch'io moro ch'io moro ve il de =

stin t'in uo = fa à me ve il de = stin t'in uo la à =
stin t'in uo la à me ve il de = stin t'in uo la à =

Handwritten musical notation for the first system, consisting of two staves with complex rhythmic patterns and various notes.

Handwritten musical notation for the second system, featuring two staves with a "me" label and a "9" time signature.

Handwritten musical notation for the third system, consisting of two staves with rhythmic patterns.

Handwritten musical notation for the fourth system, including a vocal line with lyrics and a piano accompaniment.

Nò nò la sciarni d - mio teoro

Tutta stutta - in pagno - hai -

Handwritten musical score for the first system. It consists of five staves. The top two staves are vocal lines. The third staff is a basso continuo line with figured bass notation. The fourth and fifth staves are also vocal lines. The lyrics are written below the vocal staves.

I Je *I Je*
I Je *I Je*
- la mia fé se mi credi amato bene
- la mia fé se mi credi amato bene

Handwritten musical score for the second system. It consists of five staves. The top two staves are vocal lines. The third staff is a basso continuo line with figured bass notation. The fourth and fifth staves are also vocal lines. The lyrics are written below the vocal staves.

ah, souvenzati ch'io moro se il destin s'in vola a
ah souvenzati ch'io moro se il destin s'in vola a

Handwritten musical notation for the first system, consisting of two staves. The top staff contains a melodic line with various note values and rests. The bottom staff contains a bass line with notes and rests. A double bar line is present at the end of the system.

me t'invola a me ah no no la sciarpni

me t'invola a me ah no la xi

no lasciarni a - mato bene ah sou

credi a - mato bene ah sou

Handwritten musical score for the first system. It consists of two vocal staves and a basso continuo line. The lyrics are: "uengati d'io moro d'io mo - ro se il de -".

Handwritten musical score for the second system. It consists of two vocal staves and a basso continuo line. The lyrics are: "stin tin, vola a me se il de - stin tin" and "stin tin vola a me se il dartin tin".

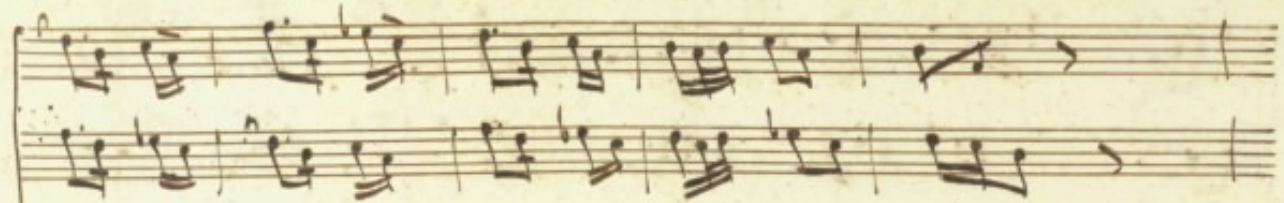
Handwritten musical notation for the first system, consisting of two staves with complex rhythmic patterns and accidentals.

Handwritten musical notation for the second system, including vocal lines with lyrics and piano accompaniment.

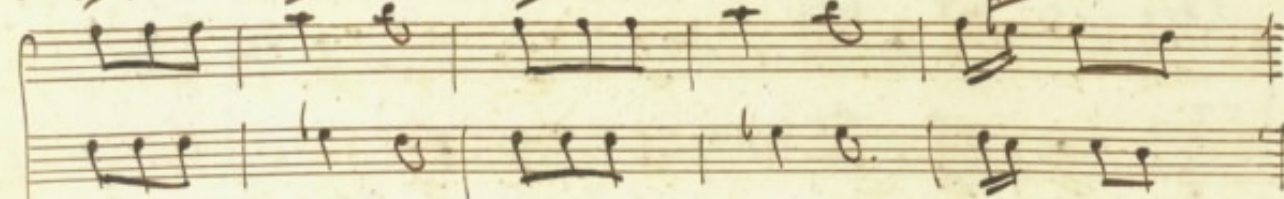
vola à ne
vola à ne

Handwritten musical notation for the third system, featuring piano accompaniment and a 'Com ga' marking.

Com ga -



ti te il no stro ar do = re il no stro ar do = re
Com pa = ti te il no stro ar do = re



voi bel al me in na mo ra = te in na mo —
voi bel al = me in na no = ra = te in na no —

rate e il fo = ter d'un primo amore ri cor -
 rate. e il fo ter d'un primo a more ri cor -

datevi ricordatevi qual è ricor datevi ricordatevi qual è
 datevi ricordatevi qual è ricor datevi ricordatevi qual è

Handwritten musical score on five staves. The first two staves contain dense musical notation with various notes and rests. The third staff is mostly empty with the instruction *a tempo giusto* written across it. The fourth staff contains the instruction *Del Segno #*. The fifth staff contains musical notation. The paper is aged and shows some staining.

fine
556

